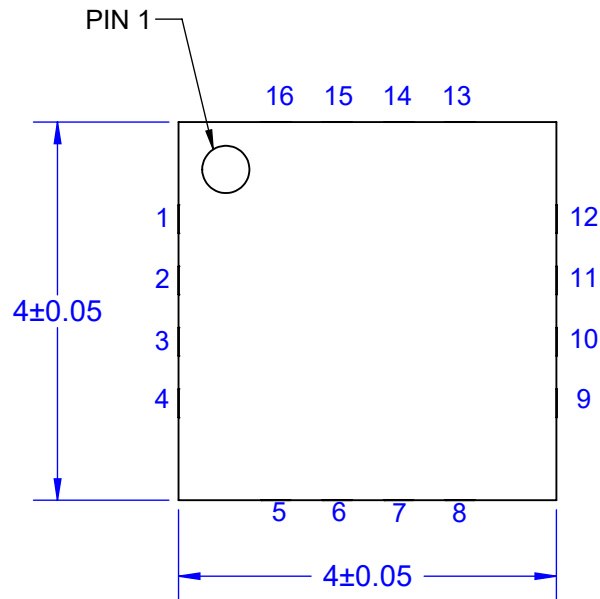
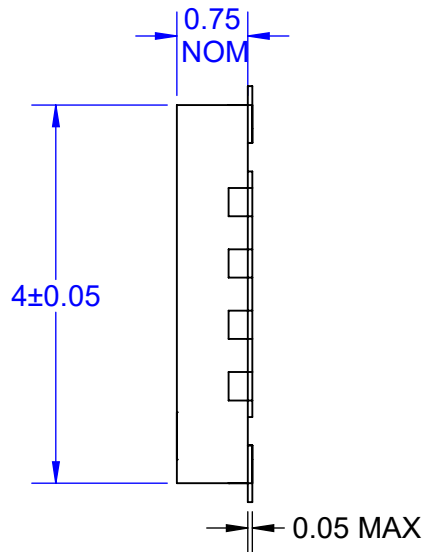


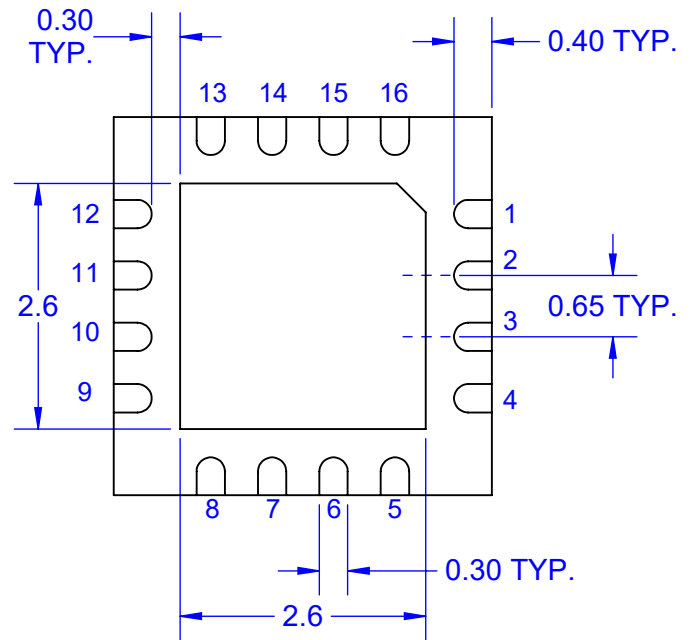
**TOP VIEW**



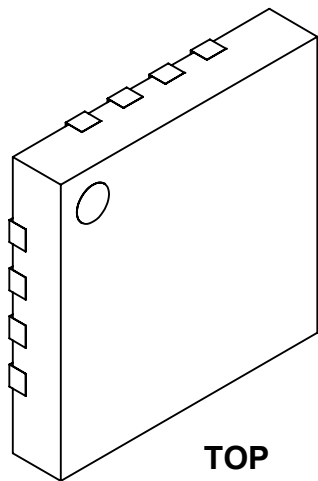
**SIDE VIEW**



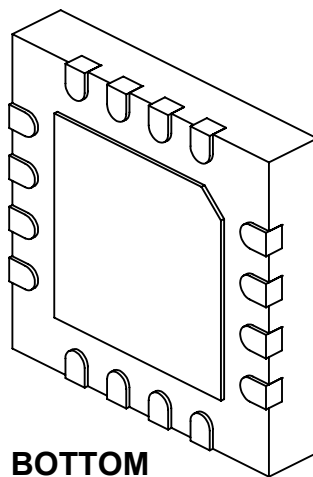
**BOTTOM VIEW**



**MODEL**



**TOP**



**BOTTOM**

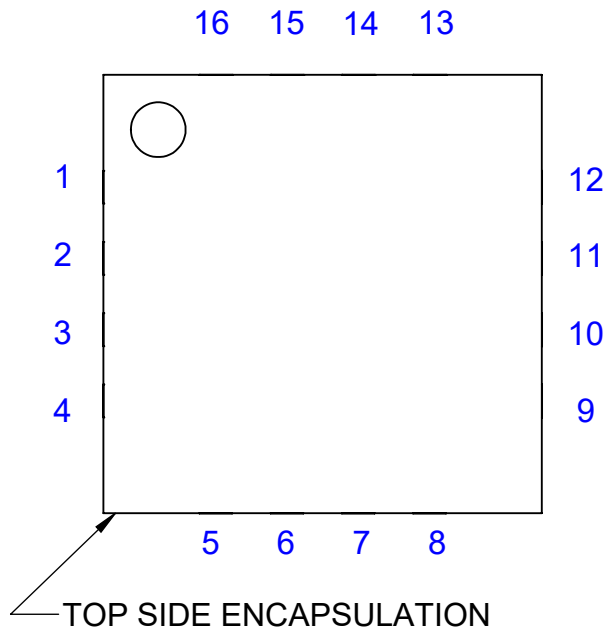
Notes: (Unless Otherwise Specified).

- 1) BODY: PLASTIC, SEMICONDUCTOR GRADE.
- 2) LEAD FRAME: COPPER, C-194 F/H.
- 3) LEAD FRAME PLATING: Ni Pd Au.
- 4) FRAME THICKNESS: 0.203mm.
- 5) DIE PAD: 2.6 X 2.6 mm EXPOSED BOTTOM.
- 6) JEDEC OUTLINE: MO-220.
- 7) DIMENSIONS IN mm.

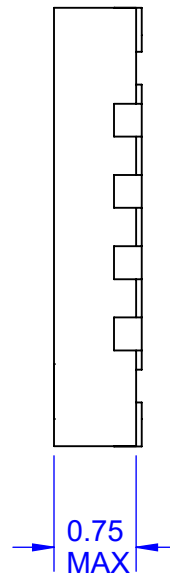
APPROVALS	DATE	<b>TopLine®</b>			
DRAWN T. Au	3/21/2022				
ENG M. Hart	3/21/2022	TITLE 16-LEAD 4mm P0.65mm QFN DAISY CHAIN			
MFG		SCALE	SIZE	DRAWING NO.	REV
QA		16:1	A	461640	A
CUST		DO NOT SCALE DRAWING			SHEET 1 OF 5
REVISED					

# DAISY CHAIN PATTERN

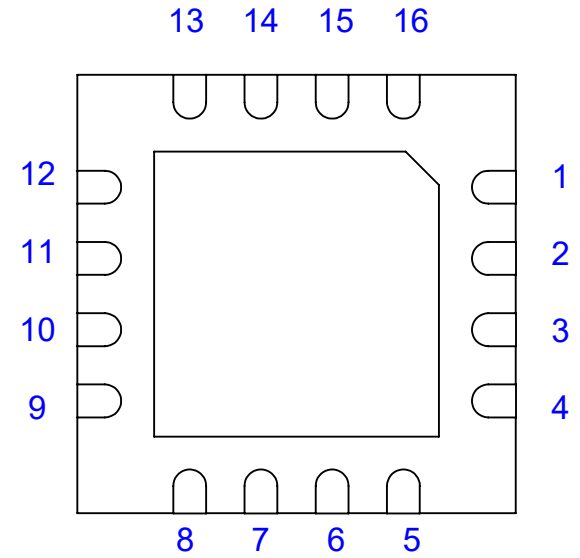
TOP VIEW



SIDE VIEW



BOTTOM VIEW



NOTE:  
1. PACKAGE DAISY CHAIN BY WIRE BONDING TO INTERNAL BOND PADS.

**TopLine**<sup>®</sup>

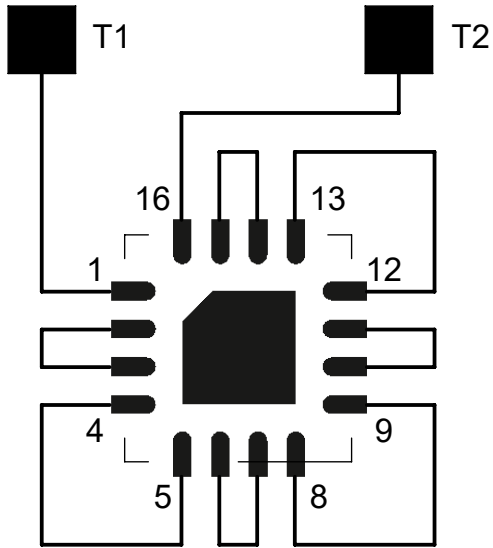
TITLE 16-LEAD 4mm P0.65mm  
QFN DAISY CHAIN

SCALE 20:1	SIZE A	DRAWING NO. 461640	REV A
---------------	-----------	-----------------------	----------

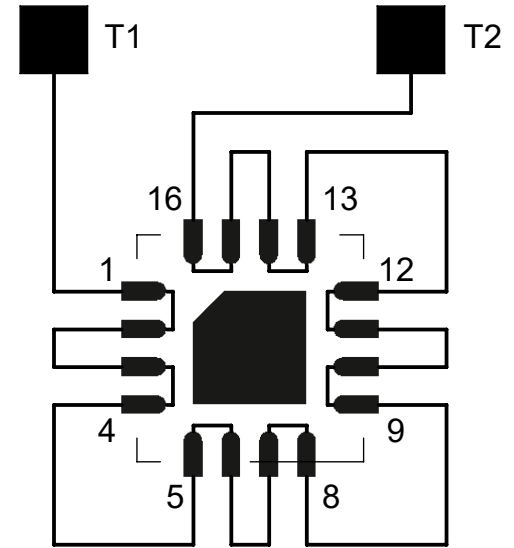
DO NOT SCALE DRAWING

SHEET 2 OF 5

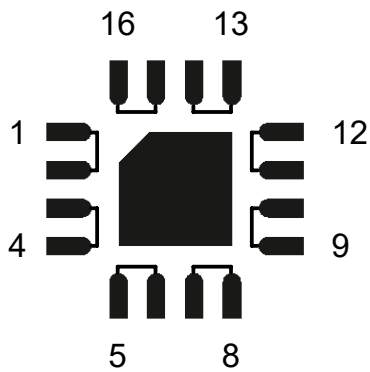
# 16L QFN DAISY CHAIN TOP VIEW



**RECOMMENDED  
PCB PADS**



**AFTER MOUNTING  
ON PCB**



**VIEW FROM TOP**

## DAISY CHAIN NET LIST

PINS	PINS
1 ~ 2	3 ~ 4
5 ~ 6	7 ~ 8
9 ~ 10	11 ~ 12
13 ~ 14	15 ~ 16

**TopLine®**

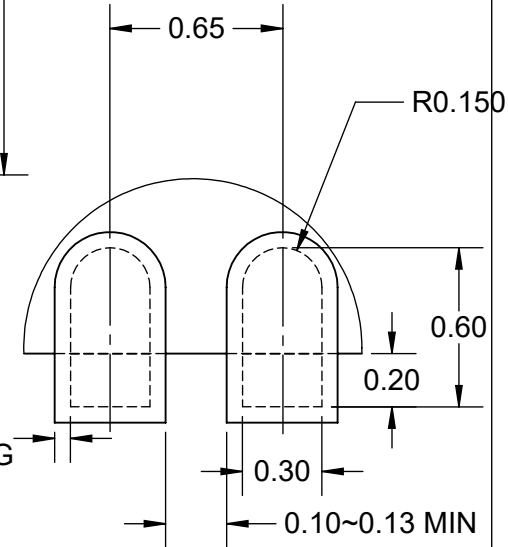
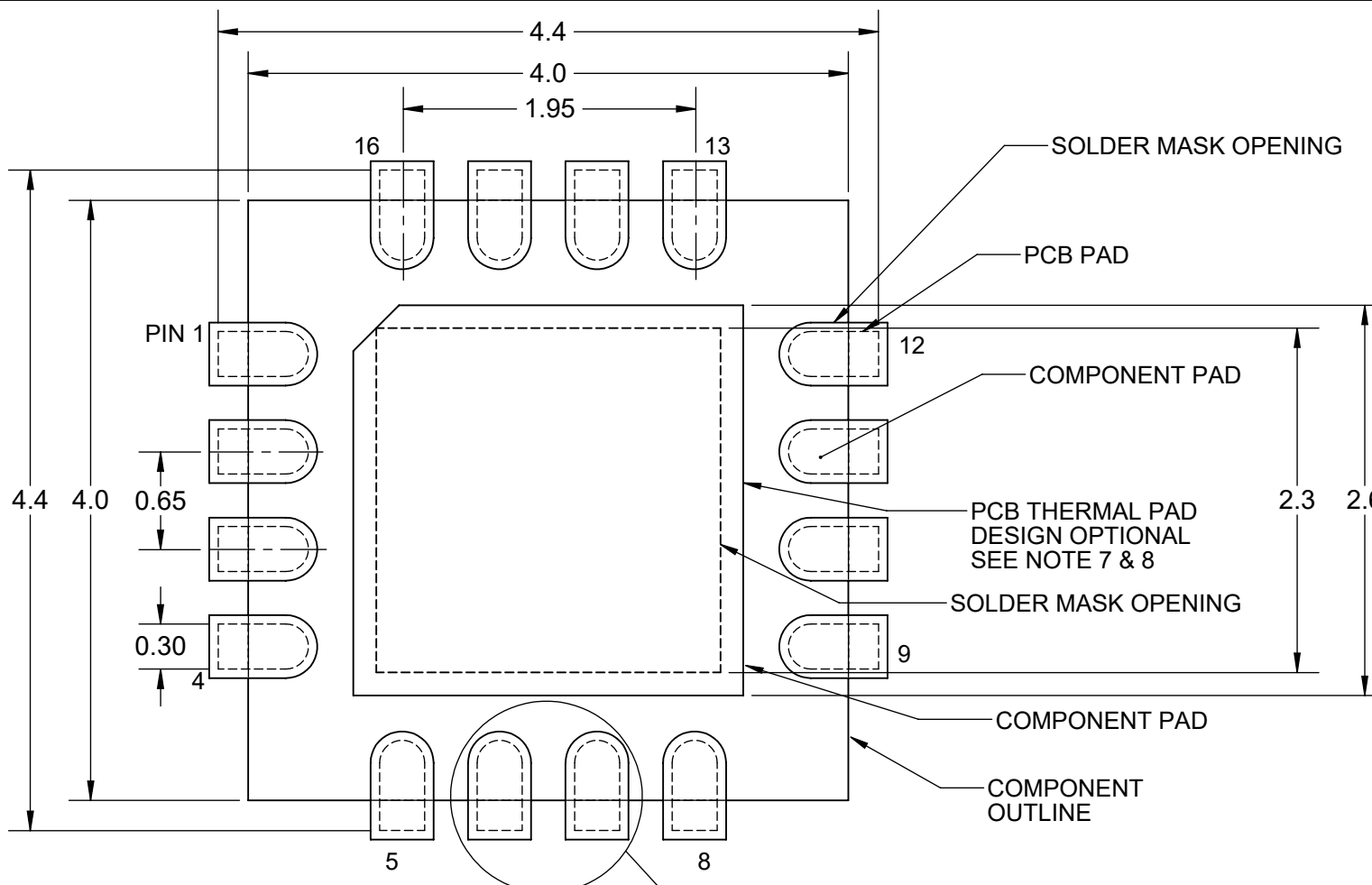
TITLE 16-LEAD 4mm P0.65mm  
QFN DAISY CHAIN

SCALE 10:1	SIZE A	DRAWING NO. 461640	REV A
---------------	-----------	-----------------------	----------

DO NOT SCALE DRAWING

SHEET 3 OF 5

# PC BOARD LAYOUT DIMENSIONS IN MM VIEW FROM TOP

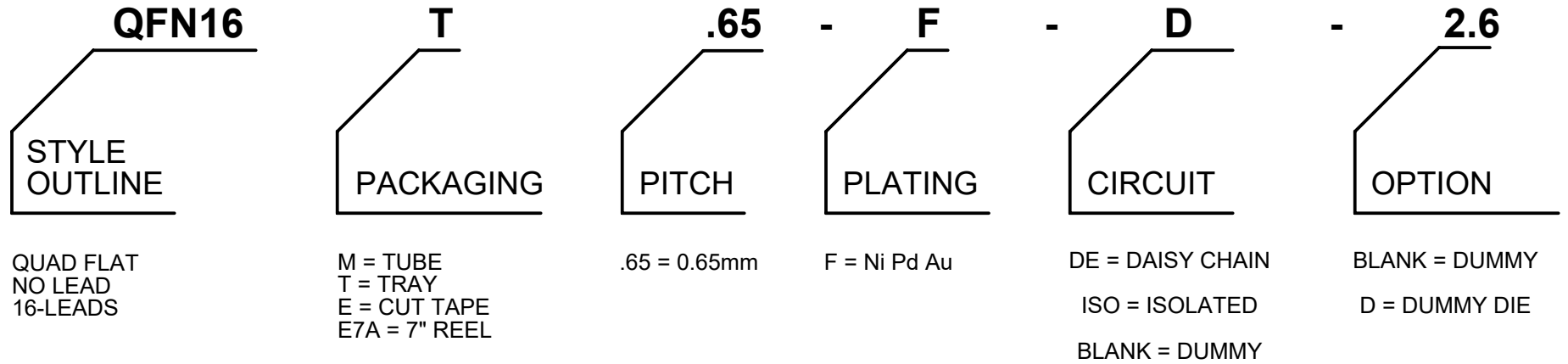


Notes: (Unless Otherwise Specified).

- 1) DIMENSIONS ARE PRESENTED ONLY AS A GUIDELINE. DESIGNERS SHOULD USE THEIR OWN KNOWLEDGE BASE WHEN DESIGNING THE PCB.
- 2) SURROUND EACH SIDE OF I/O PERIMETER PADS WITH 0.060~0.075 mm (NSMD) SOLDER MASK OPENING (2.4~3.0mils) OPTIONALLY OK TO USE RECTANGLE (NSMD) MASK OPENING AROUND I/O PADS.
- 3) ROUNDED PCB LAND PADS REDUCE SOLDER BRIDGING. PAD CHAMFER ANGLE MAY VARY.
- 4) PCB LANDS SHOULD BE 0.2mm LONGER THAN THE PACKAGE I/O PADS.
- 5) THE WIDTH OF PERIMETER PCB PADS SHOULD MATCH (1:1) THE WIDTH OF THE PACKAGE PADS.
- 6) REFER TO INDUSTRY REFERENCES SUCH AS IPC-SM-782 FOR PCB LAND PATTERN DESIGN.
- 7) THERMAL GROUND PADS MAY BE CHANGED TO SUIT REQUIREMENTS OF THE DESIGNER.
  - A) MAKE COPPER THERMAL PAD AS LARGE AS POSSIBLE.
  - B) DRILL MULTIPLE THERMAL VIAS 0.25~0.33mm DIAMETER USING 0.8~1.2mm PITCH GRID.
  - C) PLATE THERMAL VIA BARRELS WITH 1-OUNCE COPPER (18µm).
  - D) TENT (COVER) THERMAL VIAS WITH SOLDER MASK 0.1mm LARGER THAN THE VIA DIAMETER.
- 8) STENCIL DESIGN MAY BE CHANGED TO SUIT REQUIREMENTS OF THE DESIGNER.
  - A) LASER CUT STENCIL 0.125mm (5mil) THICK. APERTURE SIZE-TO-LAND RATIO OF 1:1.
  - B) THE SOLDER PASTE OPENING IN THE THERMAL PAD AREA SHOULD BE A MATRIX ARRAY OF SMALLER APERTURES INSTEAD OF ONE LARGE APERTURE TO CONTROL PASTE AMOUNTS.
  - C) APPLY 50% TO 80% SOLDER PASTE COVERAGE IN THE PAD AREA.

<b>TopLine®</b>			
TITLE 16-LEAD 4mm P0.65mm QFN DAISY CHAIN			
SCALE 25:1	SIZE A	DRAWING NO. 461640	REV A
DO NOT SCALE DRAWING			SHEET 4 OF 5

## PART NUMBERING SYSTEM



PART NUMBER	DAISY CHAIN	PACKAGING	RoHS Pb-FREE	Plating	DUMMY DIE
QFN16T.65-F-DE-D2.6	YES	JEDEC TRAY	YES	NiPdAu	YES
QFN16E7A.65-F-DE-D2.6	YES	TAPE & REEL	YES	NiPdAu	YES
QFN16E.65-F-DE-D2.6	YES	CUT TAPE	YES	NiPdAu	YES
QFN16M.65-F-DE-D2.6	YES	TUBE	YES	NiPdAu	YES

OTHER PART NUMBER COMBINATIONS AVAILABLE. CONTACT TOPLINE.

<b>TopLine®</b>			
TITLE 16-LEAD 4mm P0.65mm QFN DAISY CHAIN			
SCALE NONE	SIZE A	DRAWING NO. 461640	REV A
DO NOT SCALE DRAWING			SHEET 5 OF 5