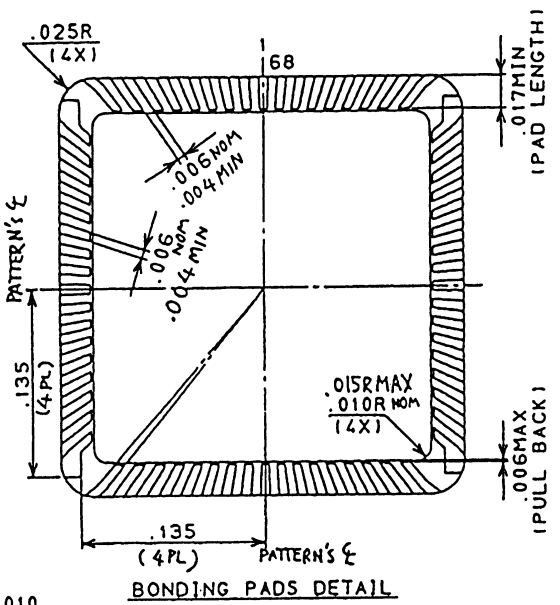
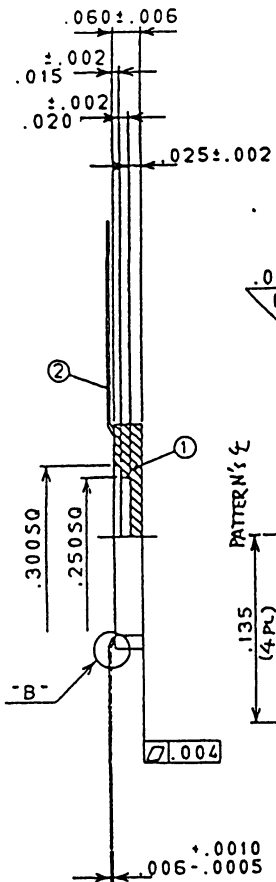
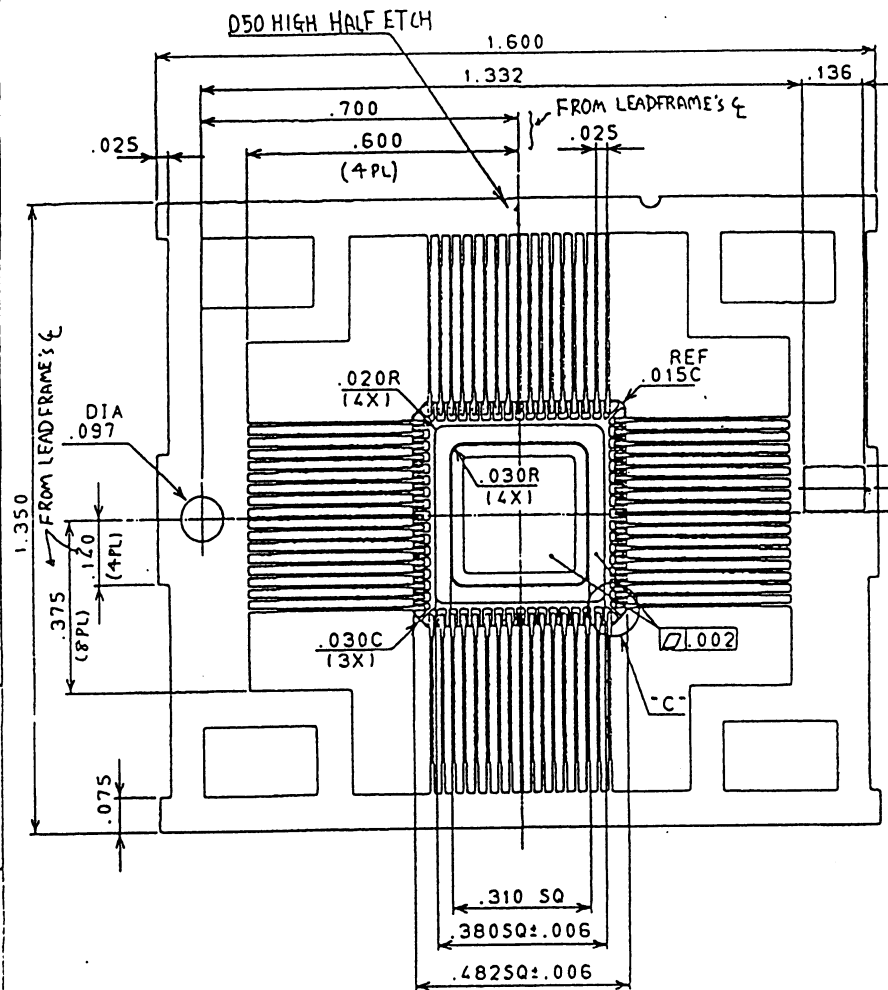


NTK

TECHNICAL CERAMICS

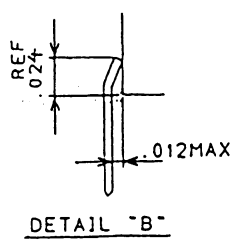
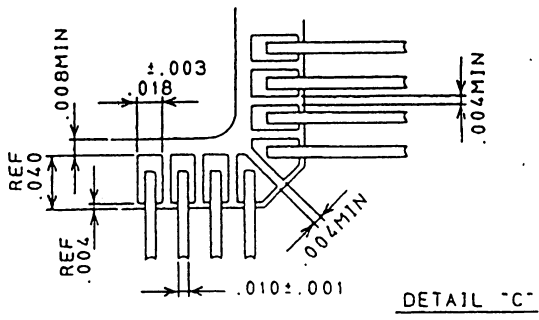
LATEST REVISION'S DISCRIPTION

A CHG BRAZING CONFIGURATION. 10.7



- NOTES: 1. GOLD PLATE 60 ~ 225 μ INCHES OVER
80-350 μ INCHES NICKEL.
2. NO LEAD TO BE ELECTRICALLY
CONNECTED TO THE DIA ATTACH PAD.
SEAL RING ISOLATED.
- 3.

TOOLED



MODIFIED DWG NO.

3	LEAD	COVAR	A	REDRAWING	10
2	CERAMIC	BLACK ALUMINA	φ	NEW DRAWING	1990
1					7-17
Item	Rev	Description	Rev	Description	Date
UNLESS OTHERWISE SPECIFIED TOLERANCES: ± 1% N. L. T. & DECIMALS .XX ± .01 & DECIMALS .XXX ± .006			APPROVED <i>[Signature]</i>		
K. FUJIKAWA			NTK TECHNICAL CERAMICS		
CHECKED			NOK SPARK PLUG CO. LTD		
TITLE			68 PIN FLAT PKG		
SCALE 5/1			DWG NO. 1MK68F1-4635A		
			SIZE A-2 (C)		