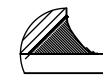
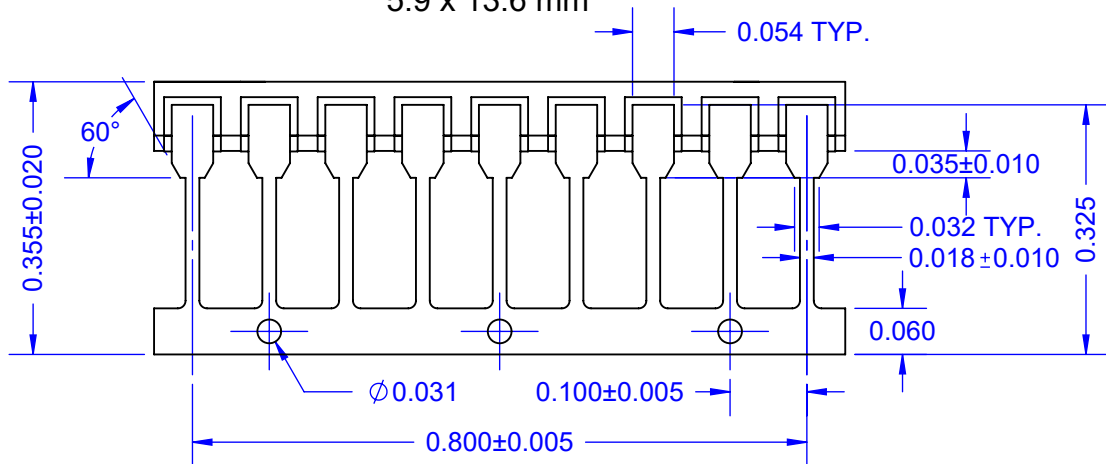



**DIE PAD**  
0.232 x 0.537-inch  
5.9 x 13.6 mm



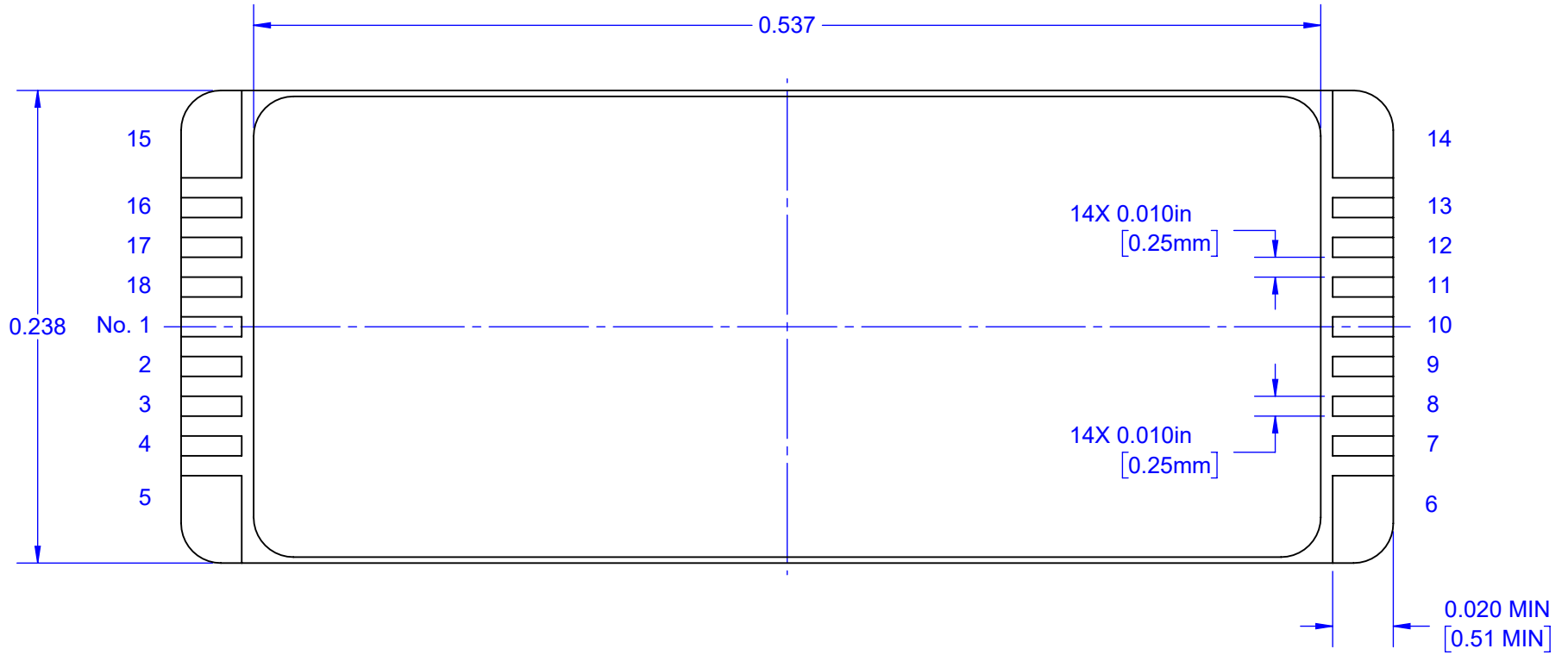
**DETAIL B**  
SCALE 10 : 1

- NOTES: (Unless Otherwise Specified).
1. GOLD PLATE 60 micro-inch over 100 micro-inch (MIN) NICKEL.
  2. SEAL AREA TO BE METALLIZED.
  3. SEE PART NUMBER TABLE FOR DIE ATTACH METALLIZATION.
  4. SEAL RING AND DIE ATTACH PAD TO BE FLOATING FROM ANY PINS.
  5. LEAD RESISTANCE: 0.30 OHM MAX.
  6. TOLERANCE  $\pm 0.005$ -INCH UNLESS OTHERWISE SPECIFIED.
  7. CERAMIC ( $Al_2O_3$  BLACK) SIDE-BRAZE PACKAGE KOVAR LEAD FRAME WITH GOLD METALLIZATION.

PART NUMBER TABLE		
PART NUMBER	DIE PAD	DWG
CERDIP18F3-N232X537	GOLD	232537

APPROVALS		DATE				
DRAWN	T.Au	1/8/2022				
ENG	M. Hart	1/8/2022	TITLE		CERDIP18F3-N232X537 DIE PAD 5.9mm x 13.6mm	
MFG			SCALE	SIZE	DRAWING NO.	REV
QA			4:1	A	232537	A
CUST			DO NOT SCALE DRAWING			SHEET 1 OF 3
REVISED						

# BONDING PADS

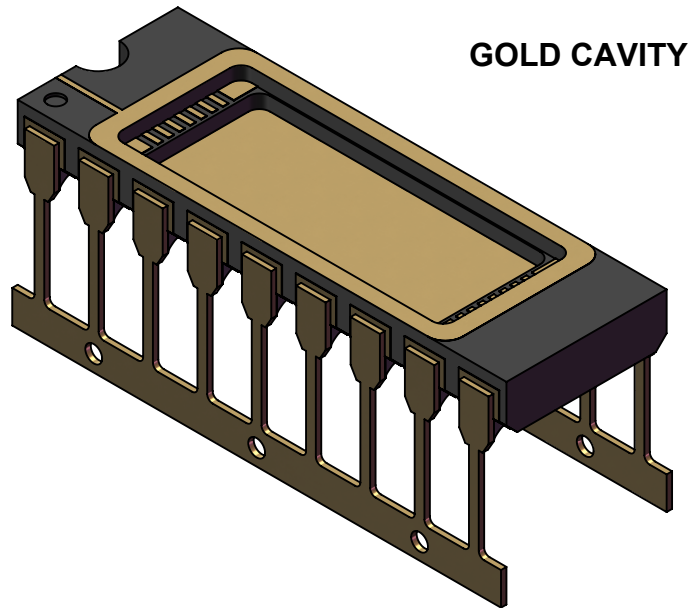


**DIE PAD**  
0.232 x 0.537-inch  
5.9 x 13.6 mm

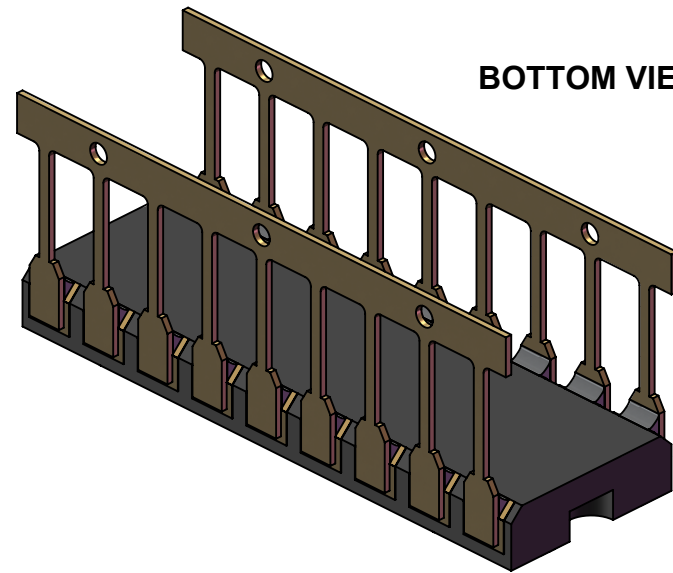
PART NUMBER TABLE		
PART NUMBER	DIE PAD	DWG
CERDIP18F3-N232X537	GOLD	232537

<b>TopLine®</b>			
TITLE CERDIP18F3-N232X537 DIE PAD 5.9mm x 13.6mm			
SCALE 12:1	SIZE A	DRAWING NO. 232537	REV A
DO NOT SCALE DRAWING		SHEET 2 OF 3	

# MODELS




**GOLD CAVITY**



**BOTTOM VIEW**

PART NUMBER TABLE		
PART NUMBER	DIE PAD	DWG
CERDIP18F3-N232X537	GOLD	232537

			
TITLE CERDIP18F3-N232X537 DIE PAD 5.9mm x 13.6mm			
SCALE 4:1	SIZE A	DRAWING NO. 232537	REV A
DO NOT SCALE DRAWING		SHEET 3 OF 3	