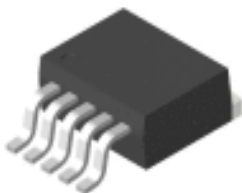




Contact Us:
 Tel: 1-800-776-9888
sales@TopLine.tv
www.TopLine.tv

D2PAK 5L
JEDEC TO-263 Package
TopLine Dummy Component
For training, practice and evaluation

Quick Specs:
 Pin Count 5L
 Pitch 1.27mm
 Body 10.0 x 9.2mm
 Power Outline Transistor/Diode



Use and Applications:
 IPC Solder Training & Practice
 Equipment Evaluation
 Prototype PWB

[See Page 2 Outline Drawing](#)

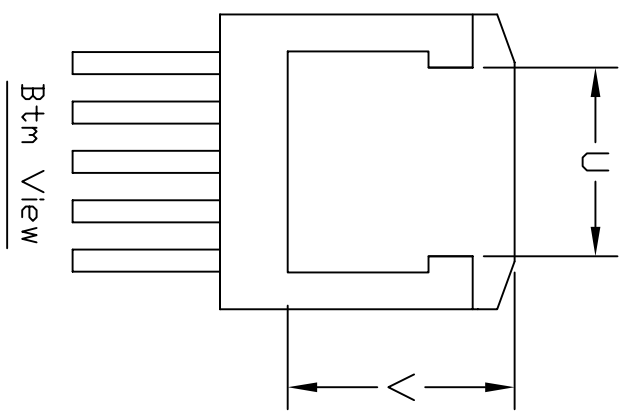
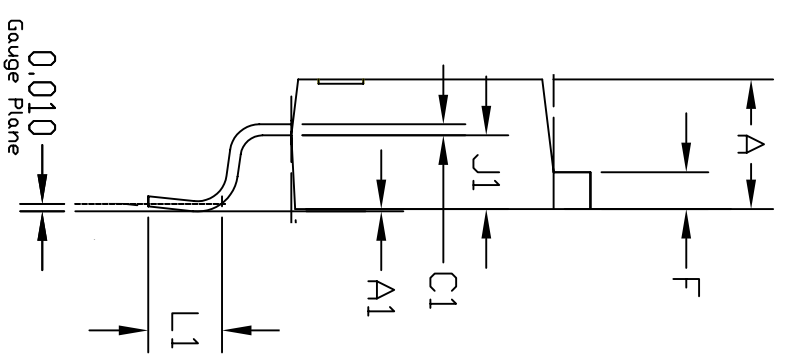
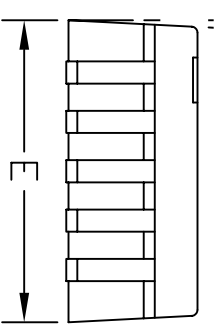
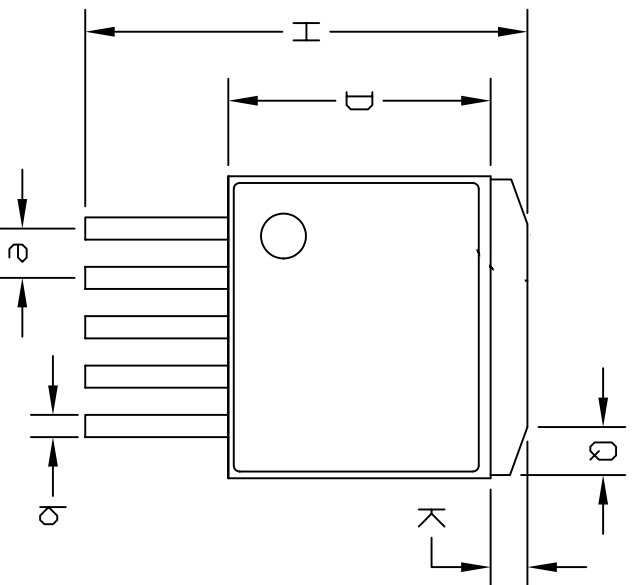
Availability:
 Delivery Stock to 4 weeks

Part Number Example:
 D2PAK5-E13A = 5L
 TO263

Part Numbering System

D2PAK	5	-	E13A	-	T	-	Option
JEDEC Series	Nbr Leads		Packaging		Plating		Daisy Chain
TO263AB Plastic Power Outline Transistor	Standard: 5 = 5L Full Leads		E13A = 13" Reel 500~800pcs E7A = 7" Reel 100pcs B = Bulk		T = Sn100 RoHS Pb-Free Blank = SnPb		Blank = Undefined DC1245 ISO = Isolated

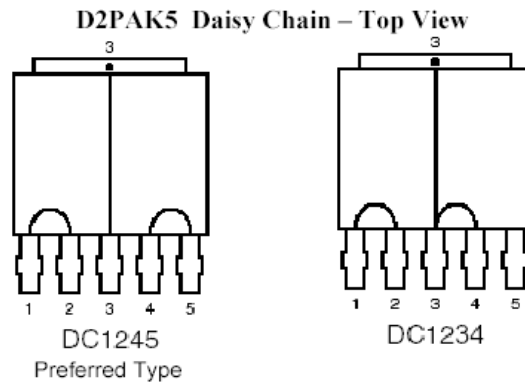
Options: Add Daisy Chain Drawing Number: DC1245 (Standard)



PDS	INCH	
	MIN	MAX
A	0.171	0.181
A1	0.000	-0.012
b	0.029	0.035
C1	0.012	0.018
D	0.351	0.361
E	0.400	0.420
e	0.062	0.072
F	0.045	0.055
H	0.575	0.625
J1	0.080	0.120
L1	0.090	0.110
K	0.045	0.055

U	0.256 Ref.
V	0.303 Ref.

D2PAK 5L
JEDEC TO-263 Package
TopLine Dummy Component
For training, practice and evaluation



Top View of Internal Daisy Chain Option. Zero Ohm Jumper

TopLine Corporation
95 Highway 22 W
Milledgeville, GA 31061, USA
Toll Free USA/Canada (800) 776-9888
International: 1-478-451-5000 • Fax: 1-478-451-3000
Email: sales@topline.tv
www.topline.tv