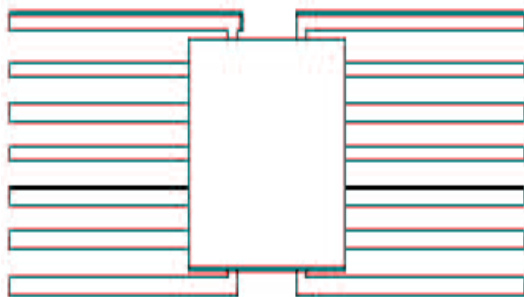




Contact Us:
Tel: 1-800-776-9888
sales@TopLine.tv
www.TopLine.tv

TO84
JEDEC TO-84 Package
TopLine Dummy Component
For training, practice and evaluation



Quick Specs:
Pin Count 14L
Pitch 0.050" (1.27mm)
Body 0.15" x .25"
Flat Pack

Use and Applications:
IPC Solder Training &
Practice
Equipment Evaluation
Prototype PWB

Availability:
Delivery Stock to 4 weeks

[See Page 2 Outline Drawing](#)

Part Numbers:
TO84
FP14C50R.15x.25S-SC

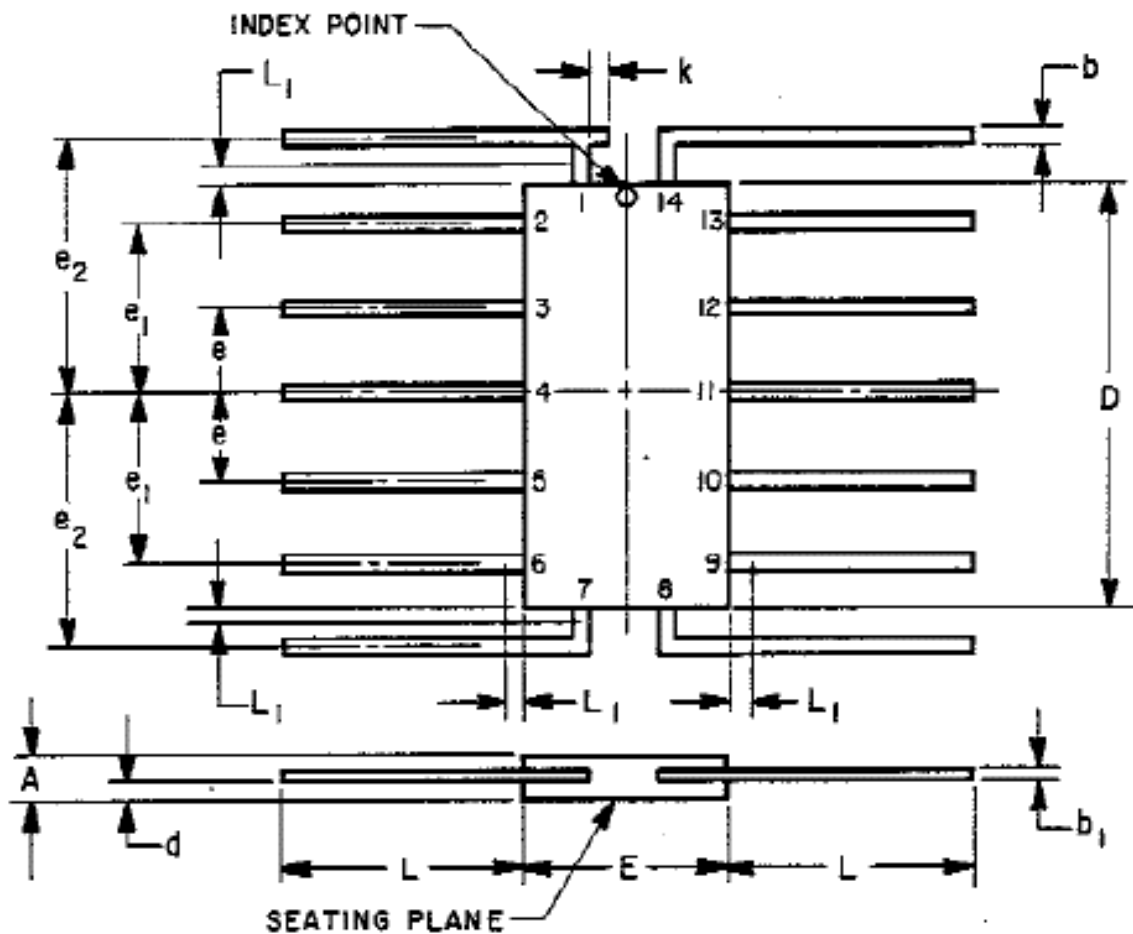
Part Numbering System

TO84	-	Option
JEDEC Series	-	Plating
Plastic Flat Pack	-	S or SC = SnPb G = Gold (Au)

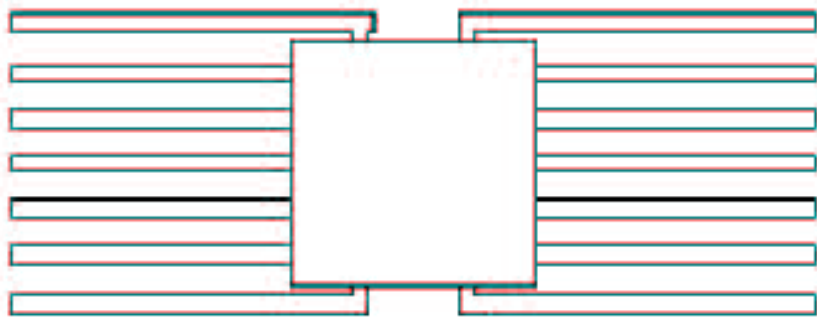
Options: open cavity ceramic packages available for packaging live die.
State your die size requirement.

Options: Daisy Chain available.

TO - 84



SYMBOL	INCHES		MILLIMETERS	
	MIN.	MAX.	MIN.	MAX.
A	.030	.070	.77	1.77
b	.010	.019	.254	.482
b ₁	.003	.006	.077	.152
D	.240	.260	6.10	6.60
d	.005	.035	.13	.88
E	.135	.155	3.43	3.93
e	.045	.055	1.15	1.39
e ₁	.095	.105	2.42	2.66
e ₂	.145	.155	3.69	3.93
k	-	.015	-	.38
L	.070	-	1.78	-
L ₁	-	.015	-	.38



TopLine Corporation
95 Highway 22 W
Milledgeville, GA 31061, USA
Toll Free USA/Canada (800) 776-9888
International: 1-478-451-5000 • Fax: 1-478-451-3000
Email: Sales@TopLine.tv

© 2010 TopLine. All Rights Reserved.