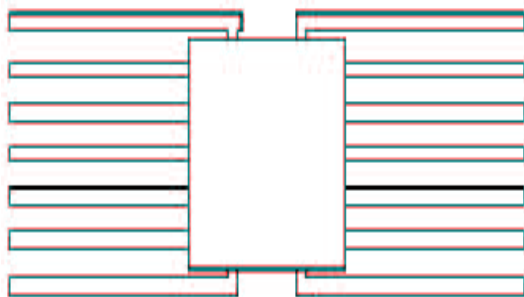




Contact Us:
Tel: 1-800-776-9888
sales@TopLine.tv
www.TopLine.tv

TO85
JEDEC TO-85 Package
TopLine Dummy Component
For training, practice and evaluation



Quick Specs:
Pin Count 14L
Pitch 0.050" (1.27mm)
Body 0.18" x .25"
Flat Pack

Use and Applications:
IPC Solder Training &
Practice
Equipment Evaluation
Prototype PWB

Availability:
Delivery Stock to 4 weeks

[See Page 2 Outline Drawing](#)

Part Numbers:
TO85
FP14C50R.18x.25S-SC

Part Numbering System

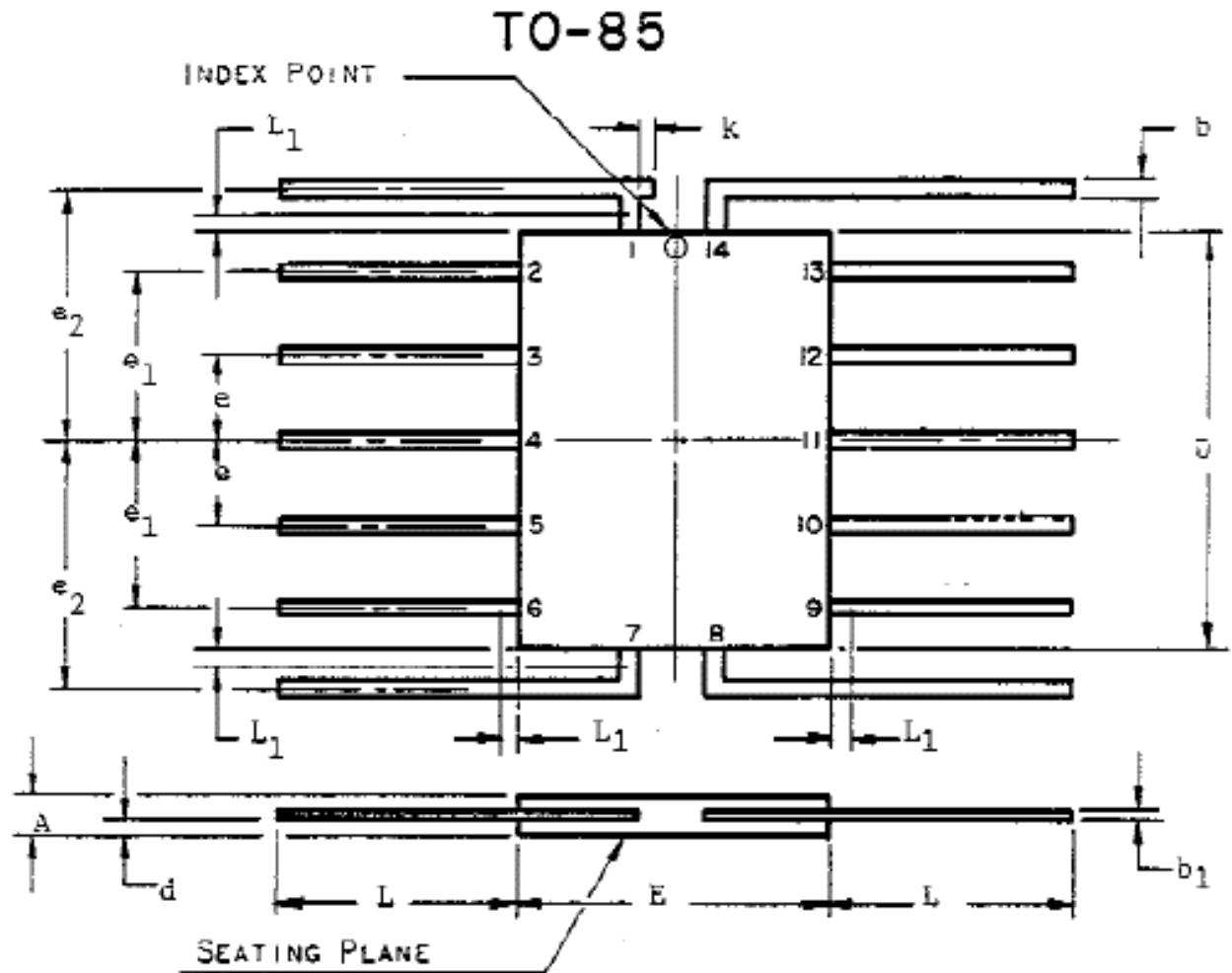
TO85	-	Option
JEDEC Series	-	Plating
Plastic Flat Pack	-	S or SC = SnPb G = Gold (Au)

Options: open cavity ceramic packages available for packaging live die.
State your die size requirement.

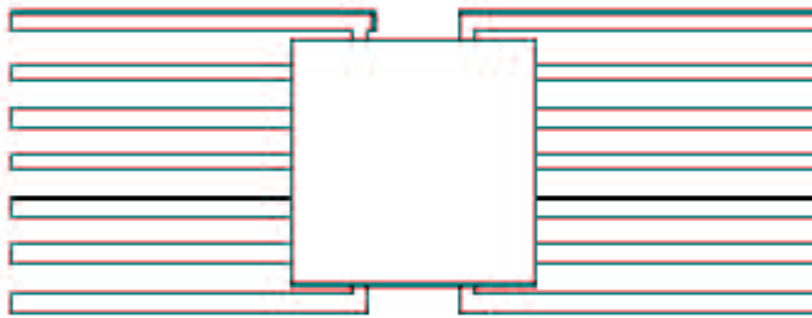
Options: Daisy Chain available.

TopLine®

Document Center



SYMBOL	INCHES		MILLIMETERS	
	MIN.	MAX.	MIN.	MAX.
A	.030	.070	.762	1.77
b	.010	.019	.254	.482
b_1	.003	.006	.077	.152
D	.240	.275	6.10	6.98
d	.005	.035	.127	.889
E	.160	.185	4.07	4.69
e	.045	.055	1.15	1.39
e_1	.095	.105	2.42	2.66
e_2	.145	.155	3.69	3.93
k	-	.015	-	.381
L	.070	-	1.78	-



TopLine Corporation
95 Highway 22 W
Milledgeville, GA 31061, USA
Toll Free USA/Canada (800) 776-9888
International: 1-478-451-5000 • Fax: 1-478-451-3000
Email: Sales@TopLine.tv

© 2010 TopLine. All Rights Reserved.