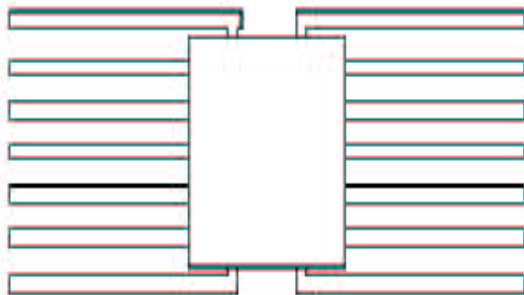




**Contact Us:**  
Tel: 1-800-776-9888  
[sales@TopLine.tv](mailto:sales@TopLine.tv)  
[www.TopLine.tv](http://www.TopLine.tv)

**TO86**  
**JEDEC TO-86 Package**  
**TopLine Dummy Component**  
**For training, practice and evaluation**



**Quick Specs:**

Pin Count 14L  
Pitch 0.050" (1.27mm)  
Body 0.25" x .25"  
Flat Pack

**Use and Applications:**

IPC Solder Training &  
Practice  
Equipment Evaluation  
Prototype PWB

**Availability:**

Delivery Stock to 4 weeks

[See Page 2 Outline Drawing](#)

**Part Numbers:**

TO86  
FP14C50R.25x.25S-SC

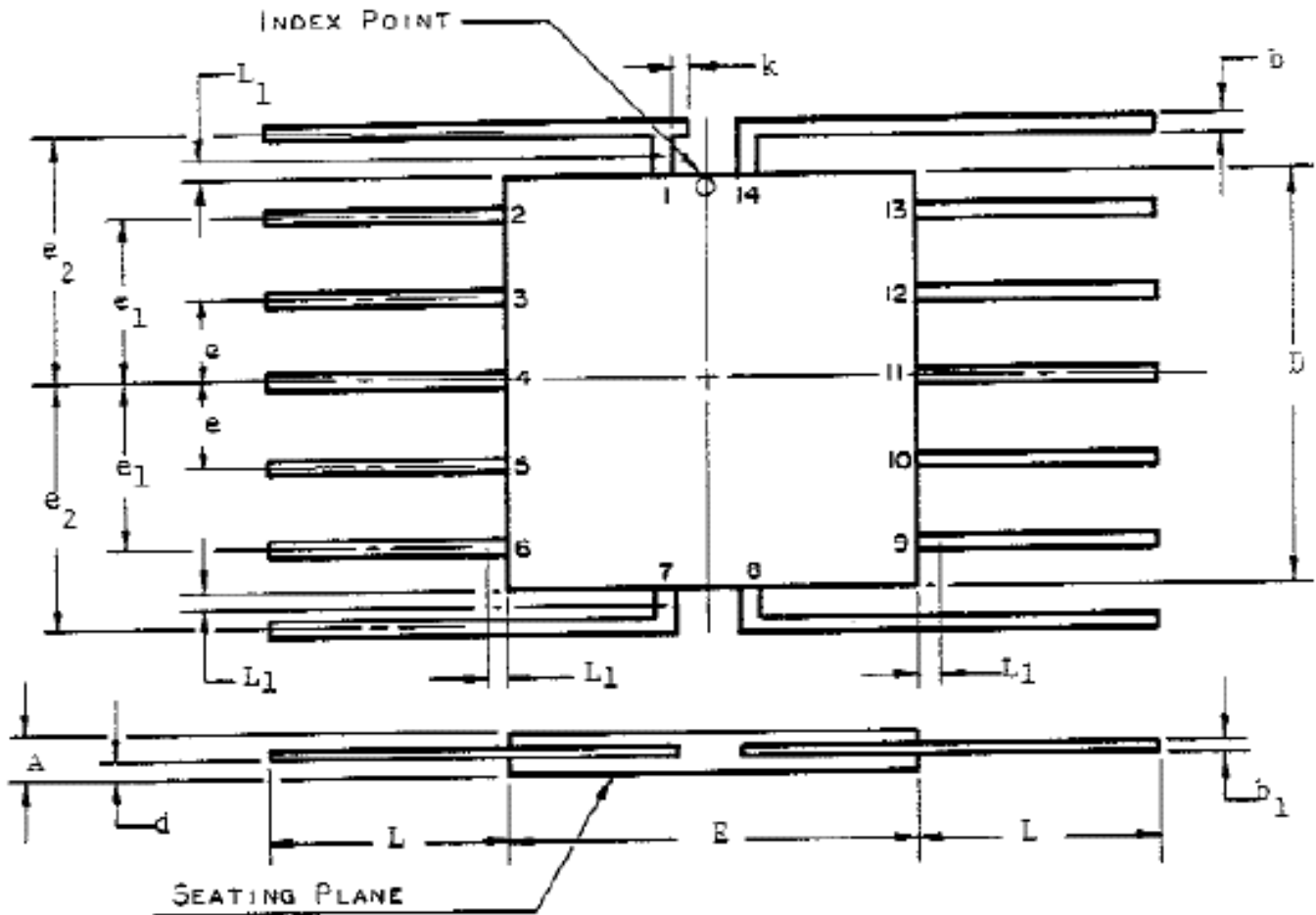
**Part Numbering System**

TO86	-	Option
JEDEC Series	-	Plating
Plastic Flat Pack	-	S or SC = SnPb G = Gold (Au)

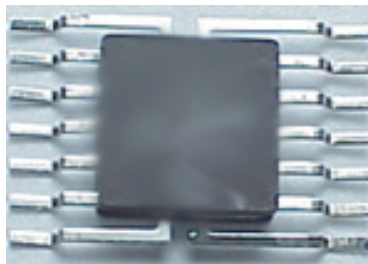
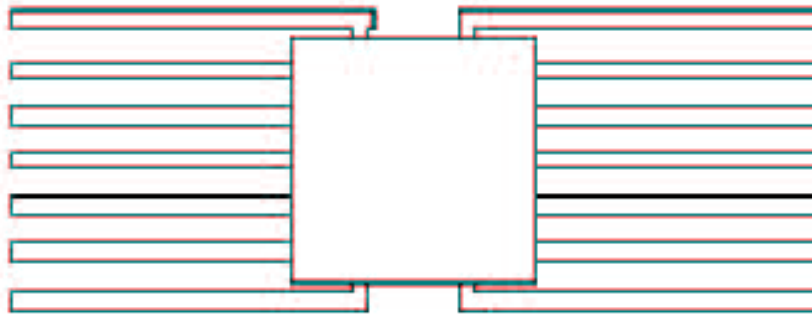
Options: open cavity ceramic packages available for packaging live die.  
State your die size requirement.

Options: Daisy Chain available.

### TO-86



SYMBOL	INCHES		MILLIMETERS	
	MIN.	MAX.	MIN.	MAX.
A	.030	.070	.762	1.77
b	.010	.019	.254	.482
$b_1$	.003	.006	.077	.152
D	.240	.275	6.10	6.98
d	.005	.035	.127	.889
E	.240	.260	6.10	6.60
e	.045	.055	1.15	1.39
$e_1$	.095	.105	2.42	2.66
$e_2$	.145	.155	3.69	3.93
k	-	.015	-	.381
L	.070	-	1.78	-



**TopLine Corporation**  
95 Highway 22 W  
Milledgeville, GA 31061, USA  
**Toll Free** USA/Canada (800) 776-9888  
International: 1-478-451-5000 • Fax: 1-478-451-3000  
Email: [Sales@TopLine.tv](mailto:Sales@TopLine.tv)

© 2010 TopLine. All Rights Reserved.