



Contact Us:
Tel: 1-800-776-9888
sales@TopLine.tv
www.TopLine.tv

TO259
JEDEC TO-259AA Package
TopLine Dummy Component
For training, practice and evaluation

Quick Specs:

Pin Count 3L
Pitch 0.200" (5.08mm)
Body 0.94"x0.54"x0.27"
Flange 1.19"L x.54"W
Metal Body



Use and Applications:

IPC Solder Training & Practice
Equipment Evaluation
Prototype PWB

[See Page 2 for Outline Drawing](#)

Availability:

Delivery Stock to 4 weeks

Part Numbers:

TO259 = Ni Plated
TO259-GOLD = Au Plated

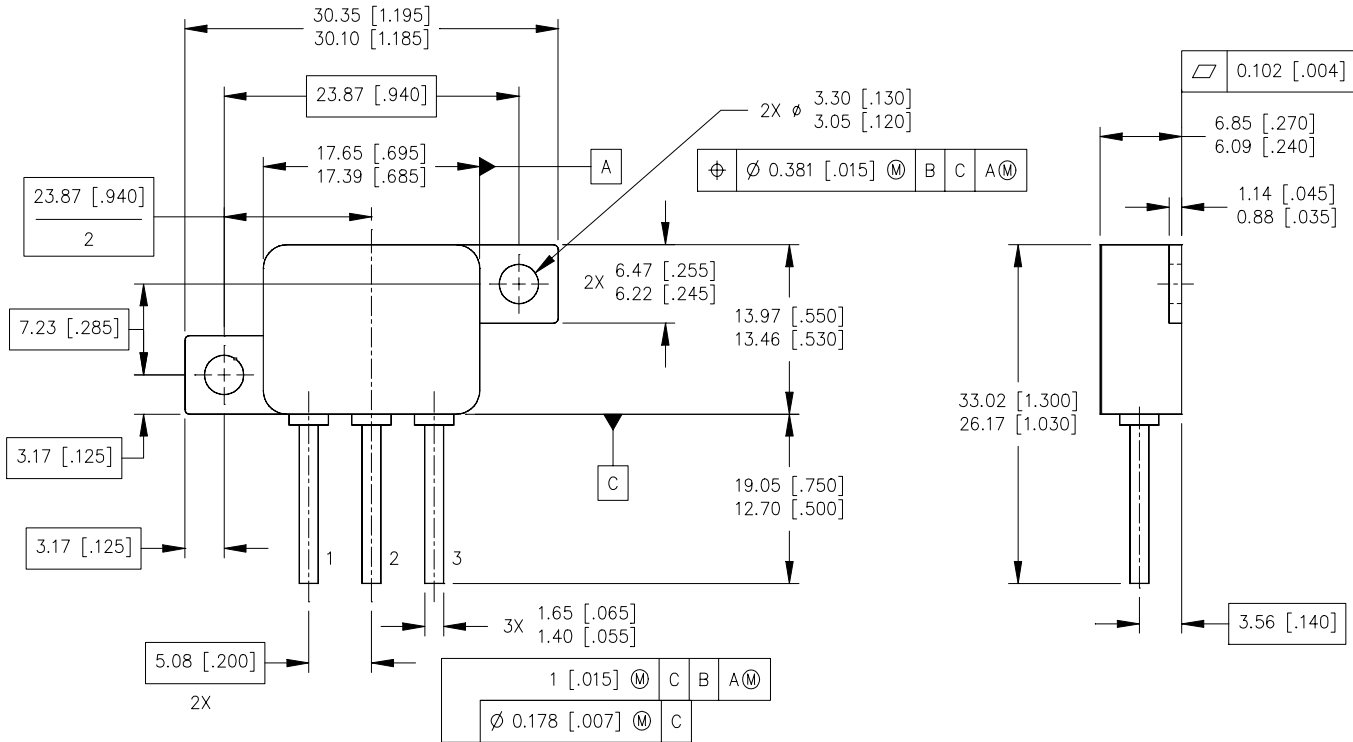
Part Numbering System

TO259	-	Option
Jedec Series	-	Plating
Metal Case	-	Blank = Nickel GOLD = Au

Options: open **Headers and cans** available for packaging live die.
State your die size requirement.

TopLine Corporation
95 Highway 22 W
Milledgeville, GA 31061, USA
Toll Free USA/Canada (800) 776-9888
International: 1-478-451-5000 • Fax: 1-478-451-3000
Email: sales@topline.tv

TO-259AA Metal Case TopLine



NOTES:

1. DIMENSIONING AND TOLERANCING PER ASME 14.5M-1994.
2. DIMENSIONS ARE SHOWN IN MILLIMETERS [INCHES].
3. CONTROLLING DIMENSION: INCH
4. CONFORMS TO JEDEC OUTLINE TO-259AA.