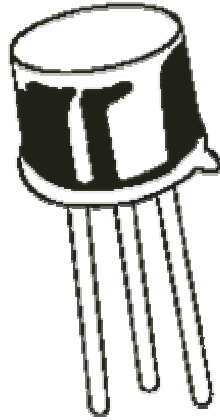




Contact Us:
Tel: 1-800-776-9888
sales@TopLine.tv
www.TopLine.tv

TO39
JEDEC TO-39 Package
TopLine Dummy Component
For training, practice and evaluation



Quick Specs:

Pin Count 3L
Pitch 0.200" (5.08mm) 90°
Body 0.315" Dia (8.0 mm)
Metal Body

Use and Applications:

IPC Solder Training & Practice
Equipment Evaluation
Prototype PWB

Availability:

Delivery Stock to 4 weeks

Part Numbers:

TO39 = SnPb (Tin-Lead)
TO39-TIN = Sn100 (Pb-Free)
TO39-GOLD = Au (Pb-Free)

Part Numbering System

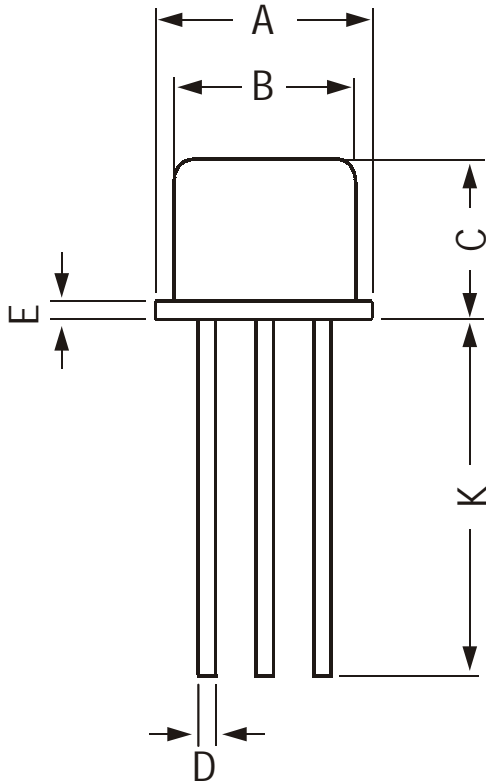
TO39	-	Option
Jedec Series	-	Plating
Metal Case	-	Blank = SnPb TIN = Sn100 GOLD = Au

Options: open **Headers and cans** available for packaging live die.
State your die size requirement.

TopLine Corporation
95 Highway 22 W
Milledgeville, GA 31061, USA
Toll Free USA/Canada (800) 776-9888
International: 1-478-451-5000 • Fax: 1-478-451-3000
Email: sales@topline.tv

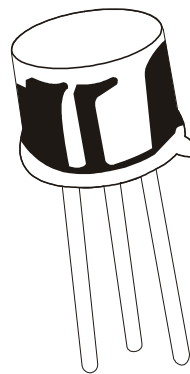
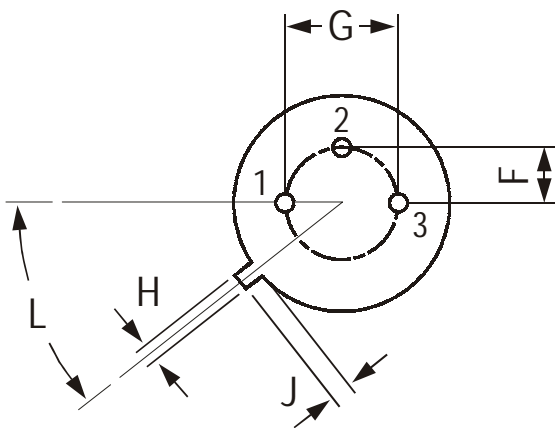
TopLine

TO-39 Metal Can Package



DIM	MIN	MAX
A	8.50	9.39
B	7.74	8.50
C	6.09	6.60
D	0.40	0.53
E	—	0.88
F	2.41	2.66
G	4.82	5.33
H	0.71	0.86
J	0.73	1.02
K	12.7	38
L	42 DEG	48 DEG

All dimensions are in mm



- PIN Choices
- a. Tin - Lead Free
 - b. Gold - Lead Free
 - c. SnPb