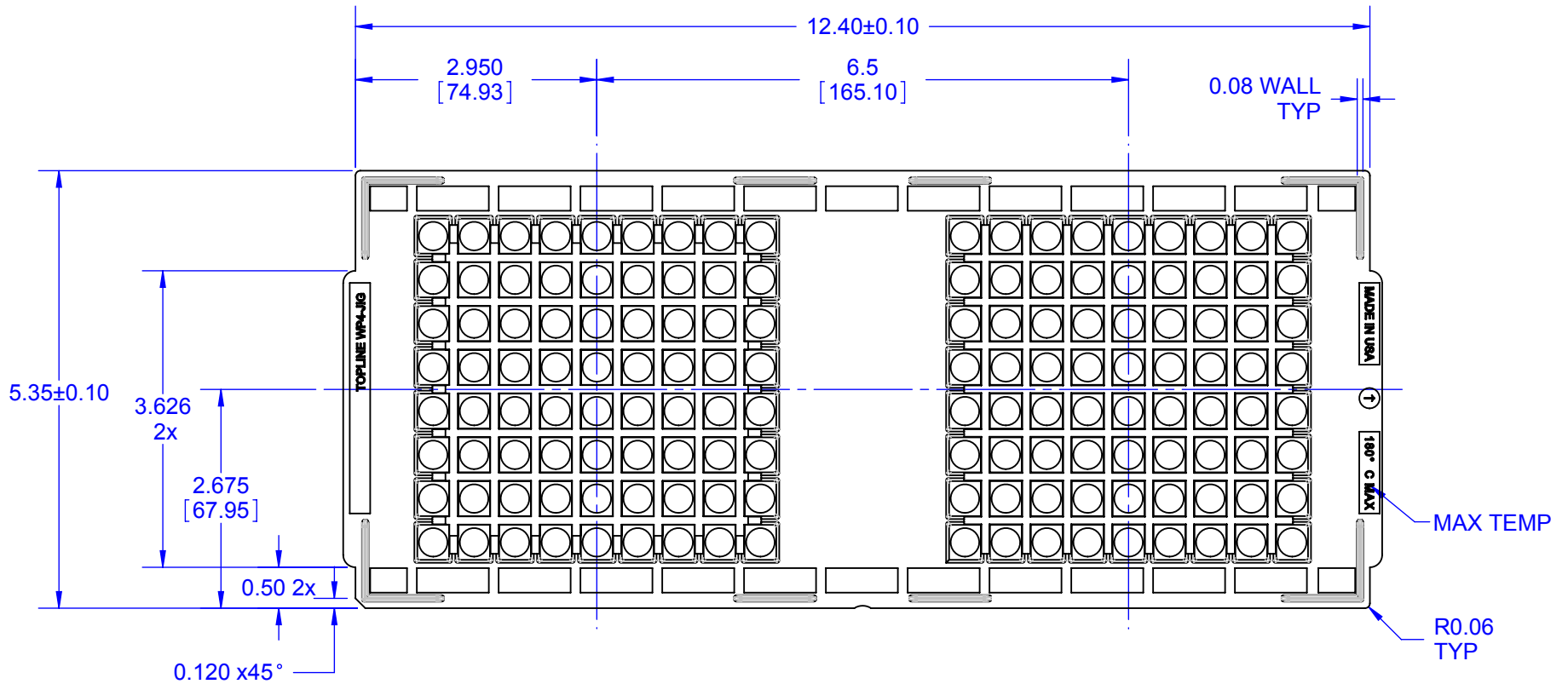


TOP VIEW

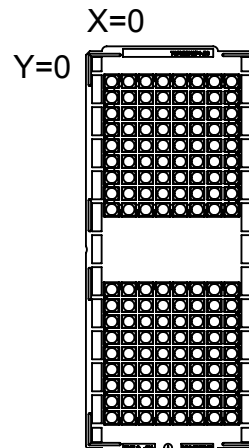
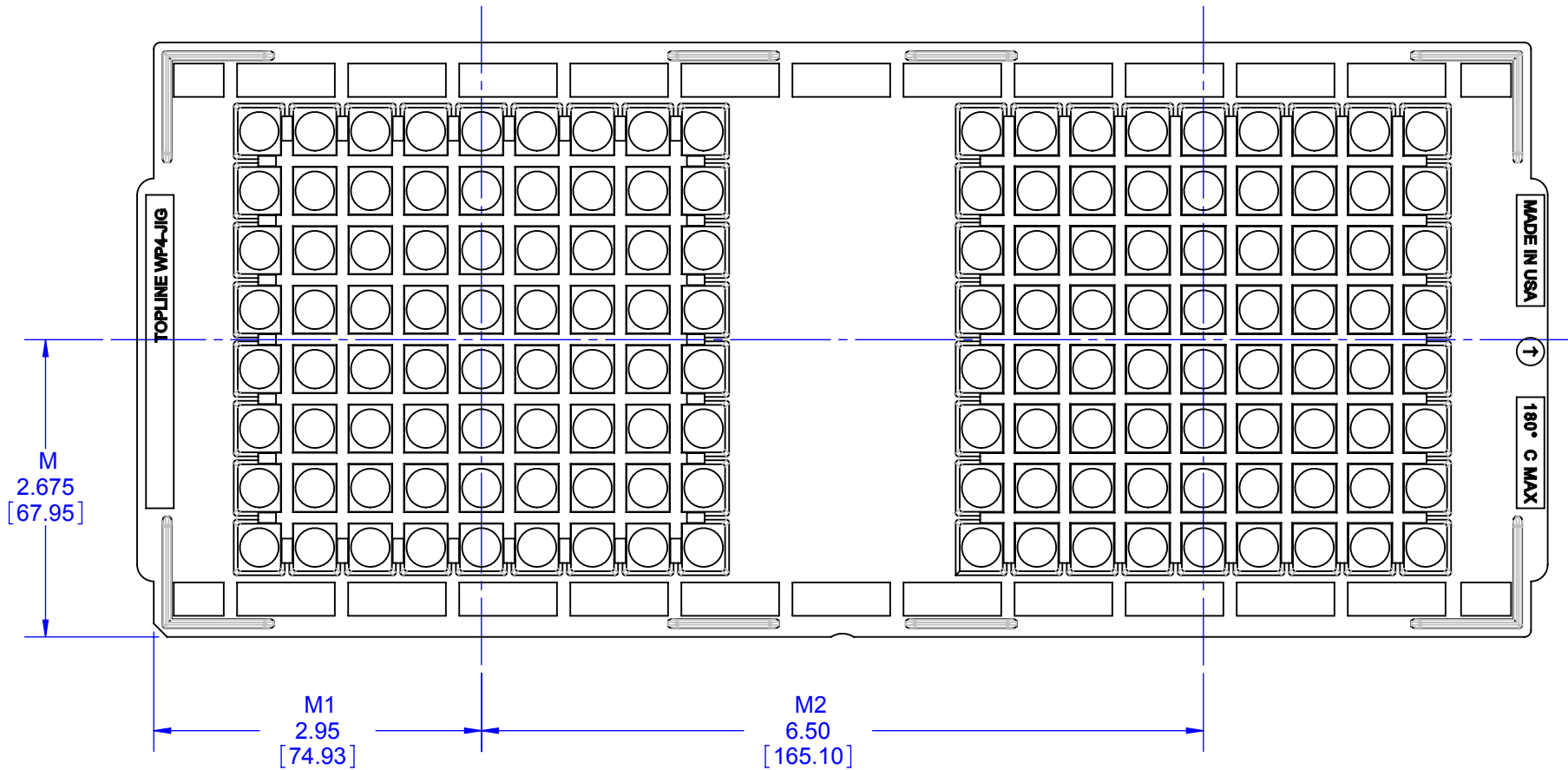


NOTES:

1. DIMENSIONS IN INCHES.
2. JEDEC OUTLINE.
3. TEMPERATURE RATING 180°C MAX.
4. JIG TRAY MATERIAL: PES (Polyethersulfone).
5. SURFACE RESISTIVITY $10^5 \Omega$ (NOMINAL).
6. ESD SAFE: STATIC DISSIPATIVE.
7. COLOR: BLACK.
8. POCKETS: HOLDS 2 WAFFLE PACKS.
9. WAFFLE PACK SIZE: 4.0" x 4.0" x 0.315".

APPROVALS	DATE	TopLine®			
DRAWN T. Au	05/08/14				
ENG M. Hart	05/08/14	TITLE WP4-JIGTRAY JEDEC OUTLINE CARRIER			
MFG		SCALE	SIZE	DRAWING NO.	REV
QA		1:2	A	780400	A
CUST		DO NOT SCALE DRAWING			SHEET 1 OF 4
REVISED					

JEDEC PICK AND PLACE X / Y COORDINATES



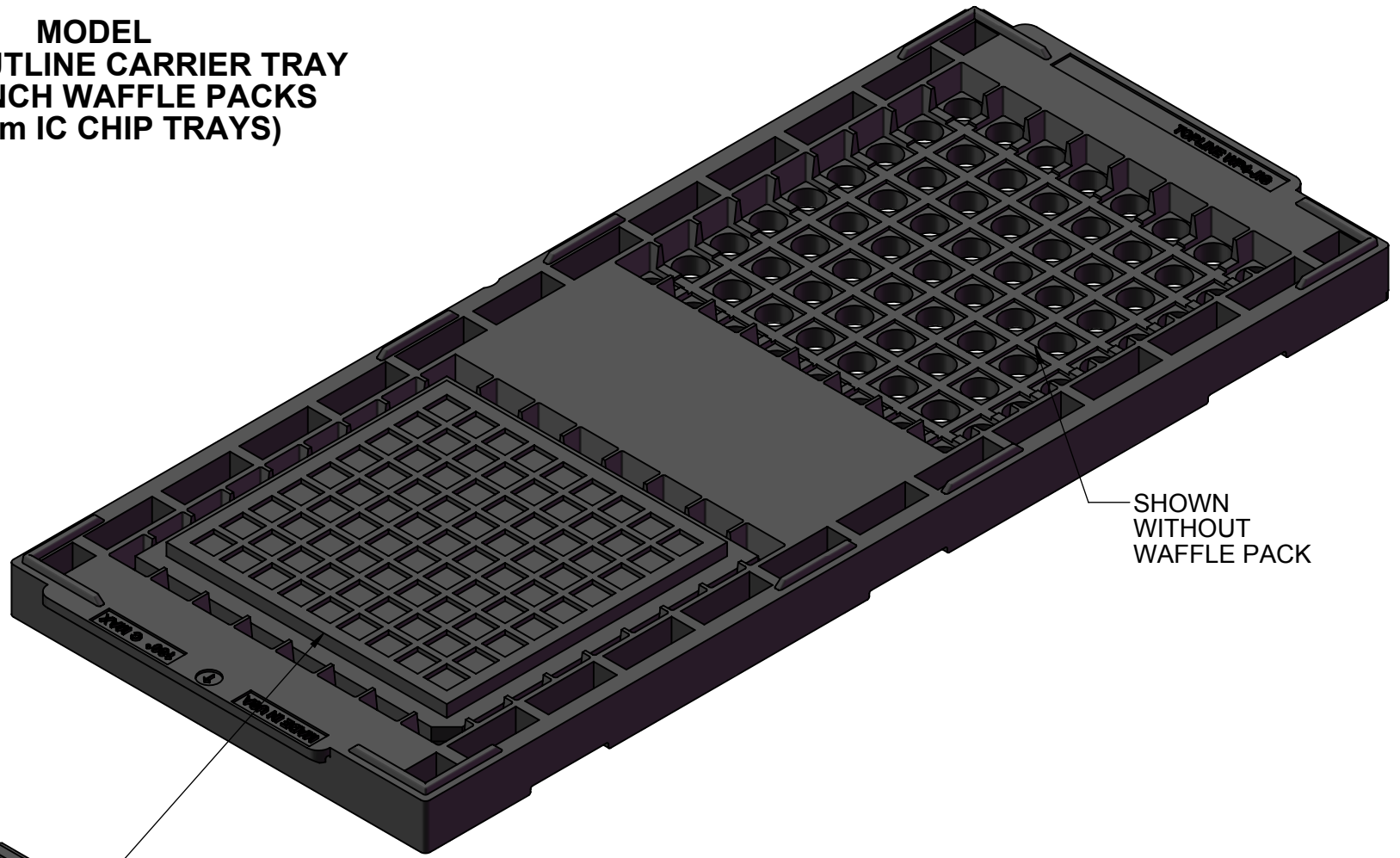
Pockets N3	Columns N1	Rows N2	Row 1 M	Col 1 M1	Col 2 M2	Row 2 M3
2.1	2	1	2.675	2.950	6.500	

NOTES:
 JEDEC X-Y ORIENTATION ROTATED 90°.
 M FIRST STEP IN X DIRECTION.
 M1 FIRST STEP IN Y DIRECTION.
 M2 Y-AXIS STEP.
 M3 X-AXIS STEP.

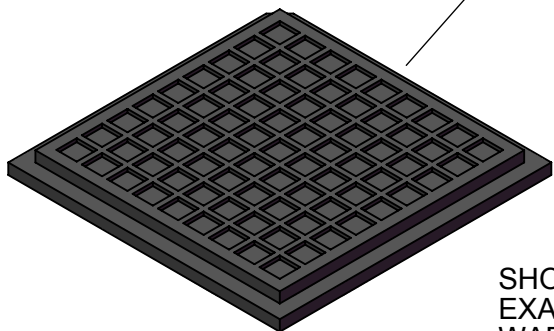
JEDEC X-Y ORIENTATION

TopLine®			
TITLE WP4-JIGTRAY JEDEC OUTLINE CARRIER			
SCALE 2:3	SIZE A	DRAWING NO. 780400	REV A
DO NOT SCALE DRAWING			SHEET 2 OF 4

**MODEL
JEDEC OUTLINE CARRIER TRAY
FOR 4-INCH WAFFLE PACKS
(100mm IC CHIP TRAYS)**



SHOWN
WITHOUT
WAFFLE PACK



SHOWN WITH
EXAMPLE 4-INCH
WAFFLE PACK

TopLine®

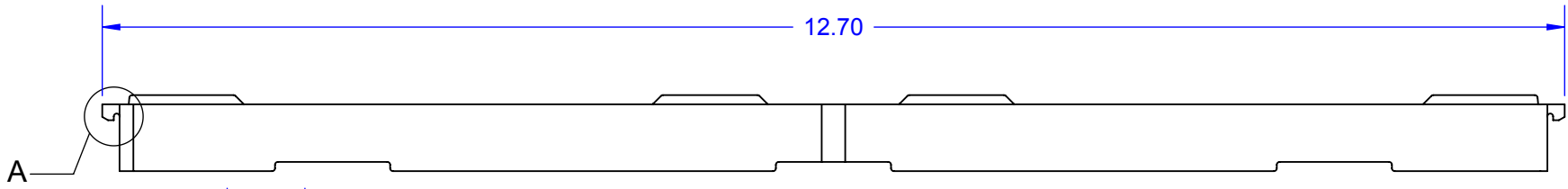
TITLE WP4-JIGTRAY
JEDEC OUTLINE CARRIER

SCALE 2:3	SIZE A	DRAWING NO. 780400	REV A
--------------	-----------	-----------------------	----------

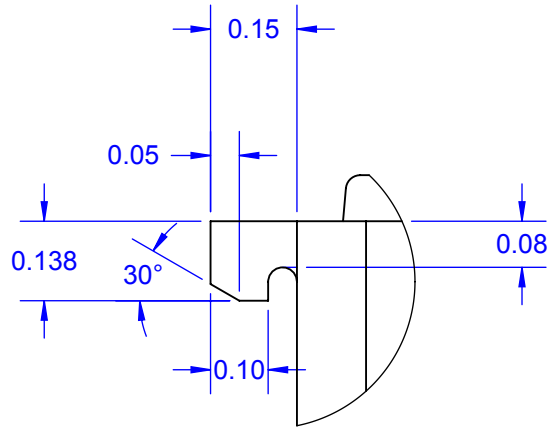
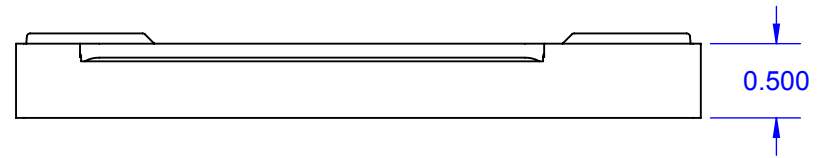
DO NOT SCALE DRAWING

SHEET 3 OF 4

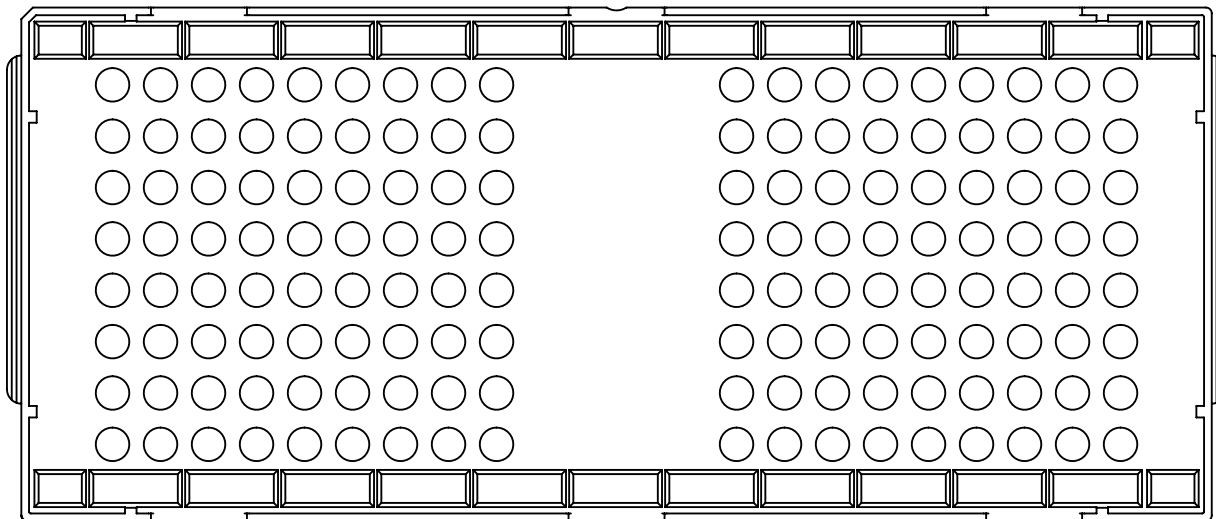
SIDE VIEW



EDGE VIEW



DETAIL A



BOTTOM VIEW

TopLine[®]

TITLE WP4-JIGTRAY
JEDEC OUTLINE CARRIER

SCALE 2:3	SIZE A	DRAWING NO. 780400	REV A
--------------	-----------	-----------------------	----------