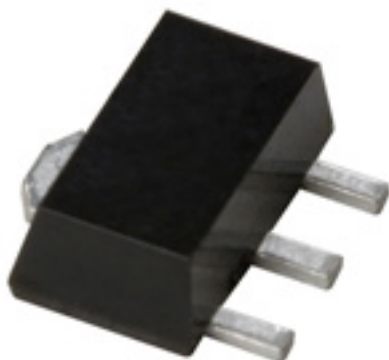




**Contact Us:**  
 Tel: 1-800-776-9888  
[sales@TopLine.tv](mailto:sales@TopLine.tv)  
[www.TopLine.tv](http://www.TopLine.tv)

**SOT89**  
**JEDEC TO-243AA Package**  
**TopLine Dummy Component**  
**For training, practice and evaluation**



**Quick Specs:**  
 Pin Count 3L  
 Pitch 1.9mm  
 Body 2.50 x 4.5mm  
 Small Outline Transistor/Diode

**Use and Applications:**  
 IPC Solder Training & Practice  
 Equipment Evaluation  
 Prototype PWB

**Availability:**  
 Delivery Stock to 4 weeks

[See Page 2 Outline Drawing](#)

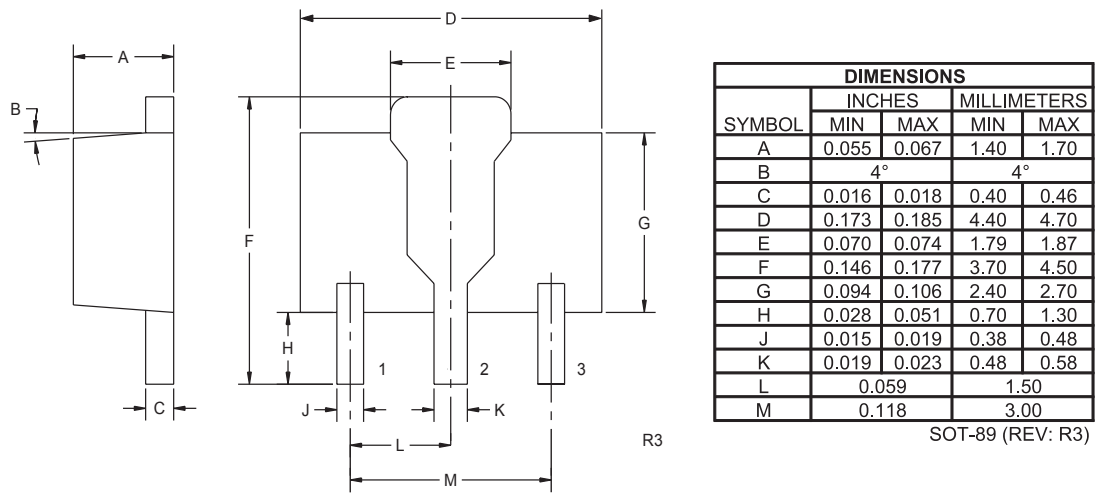
**Part Numbers:**  
 SOT89  
 TO243AA

Part Numbering System					
SOT89	E7A		T	-	Option
JEDEC Series	Packaging		Plating	-	Daisy Chain
TO243AA Plastic Small Outline Transistor Diode	E7A = 7" Reel 1000pcs E4A = 4" Reel 100pcs B = Bulk		T = Sn100 RoHS Pb-Free  Blank = SnPb		Blank = None DC123 DC124 ISO = Isolated

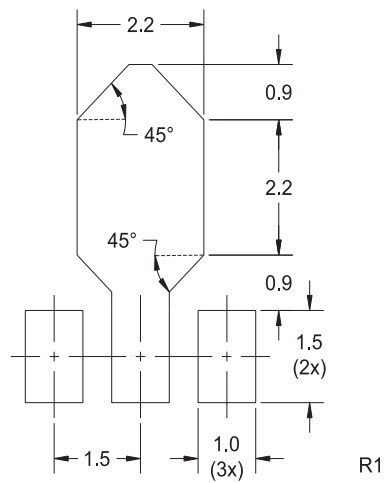
Options: Add Daisy Chain Drawing Number: DC124 or DC123 (Standard)

# SOT89 TO-243AA

## Mechanical Drawing



## PC Board Mounting Pad (Dimensions in mm)



**SOT89**  
**JEDEC TO-243AA Package**  
**TopLine Dummy Component**  
**For training, practice and evaluation**



**DC124**

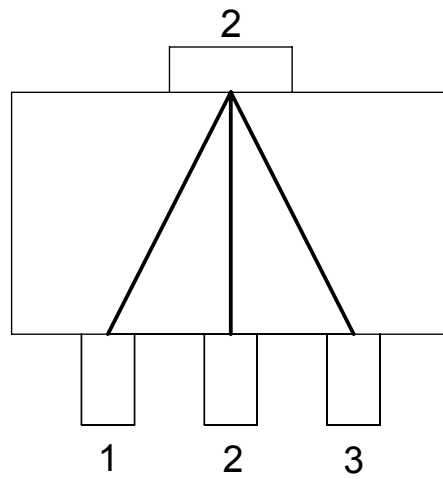


**DC123**

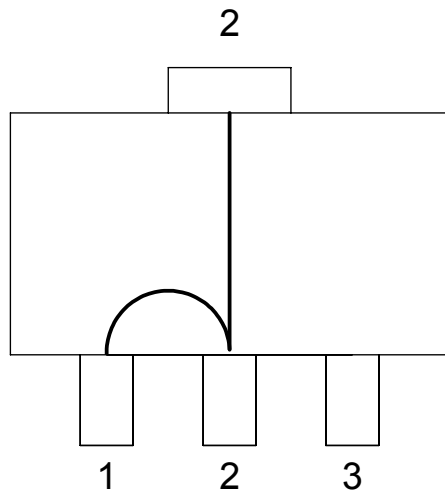
**Top View of Internal Daisy Chain Option. Zero Ohm Jumper**

**TopLine Corporation**  
95 Highway 22 W  
Milledgeville, GA 31061, USA  
**Toll Free** USA/Canada (800) 776-9888  
International: 1-478-451-5000 • Fax: 1-478-451-3000  
Email: [sales@topline.tv](mailto:sales@topline.tv)  
[www.topline.tv](http://www.topline.tv)

**DAISY CHAIN**  
**SOT89 (3L)**  
 Viewed from top



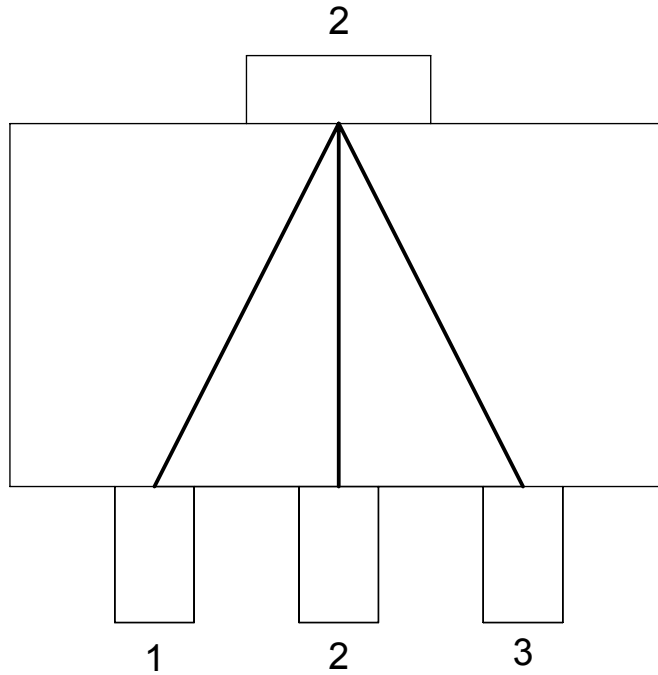
SOT89 - DC123  
 123123



SOT89 - DC124  
 123124

APPROVALS	DATE	<b>TopLine®</b>			
DRAWN T. Au	08/25/12				
ENG M. Hart	08/25/12	TITLE DAISY CHAIN SOT89 (3-L)			
MFG		SCALE	SIZE A	DRAWING NO. 121089	REV A
QA					
CUST					
REVISED		DO NOT SCALE DRAWING			SHEET 1 OF 3

**SOT89 - DC123**  
**DAISY CHAIN**  
 Viewed from top



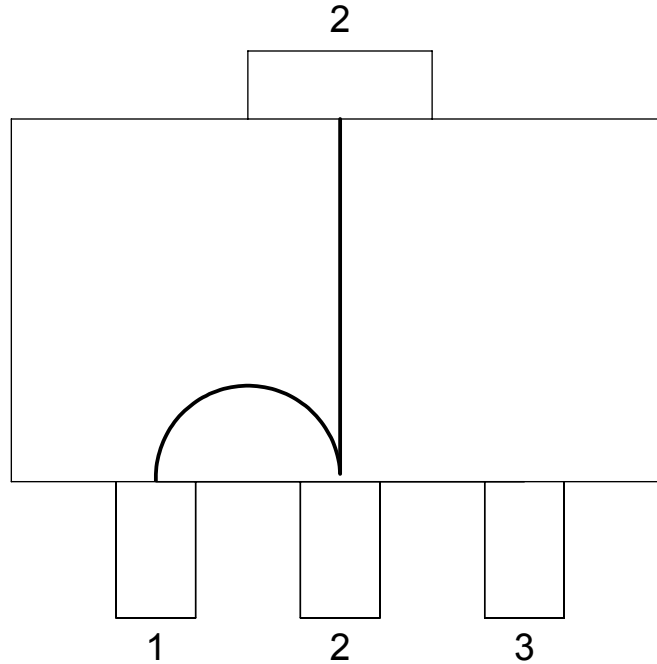
DAISY CHAIN NET LIST
PINS
1 ~ 2 ~ 3

**NOTES:**

1. DAISY CHAIN WIRE BONDED TO INTERNAL PADS.
2. SEE NET LIST FOR CONNECTIONS BETWEEN PINS.
3. DRAWING NOT TO SCALE.

APPROVALS	DATE	<b>TopLine®</b>			
DRAWN T. Au	08/25/12				
ENG M. Hart	08/25/12	TITLE SOT89 (3L) DAISY CHAIN			
MFG		SCALE	SIZE A	DRAWING NO. 123123	REV A
QA					
CUST					
REVISED		DO NOT SCALE DRAWING		SHEET 2 OF 3	

**SOT89 - DC124**  
**DAISY CHAIN**  
 Viewed from top



DAISY CHAIN NET LIST
PINS
1 ~ 2

**NOTES:**

1. DAISY CHAIN WIRE BONDED TO INTERNAL PADS.
2. SEE NET LIST FOR CONNECTIONS BETWEEN PINS.
3. DRAWING NOT TO SCALE.

APPROVALS	DATE	<b>TopLine®</b>			
DRAWN T. Au	08/25/12				
ENG M. Hart	08/25/12	TITLE SOT89 (3L) DAISY CHAIN			
MFG		SCALE	SIZE A	DRAWING NO. 123124	REV A
QA					
CUST					
REVISED		DO NOT SCALE DRAWING			SHEET 3 OF 3