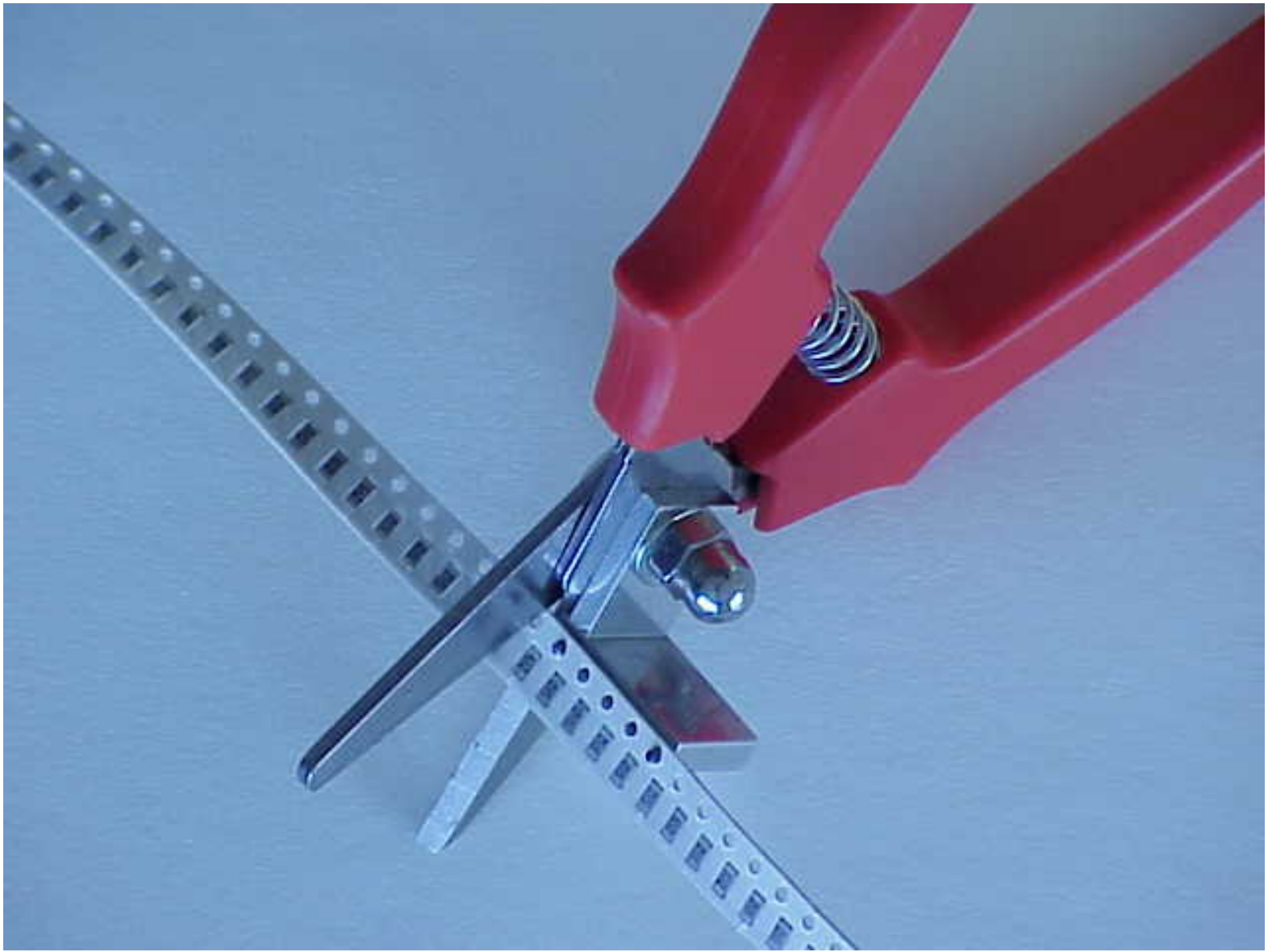


**Call Toll-Free (800) 776-9888** USA/Canada [info@TopLine.tv](mailto:info@TopLine.tv) [www.tapesplicer.com](http://www.tapesplicer.com)

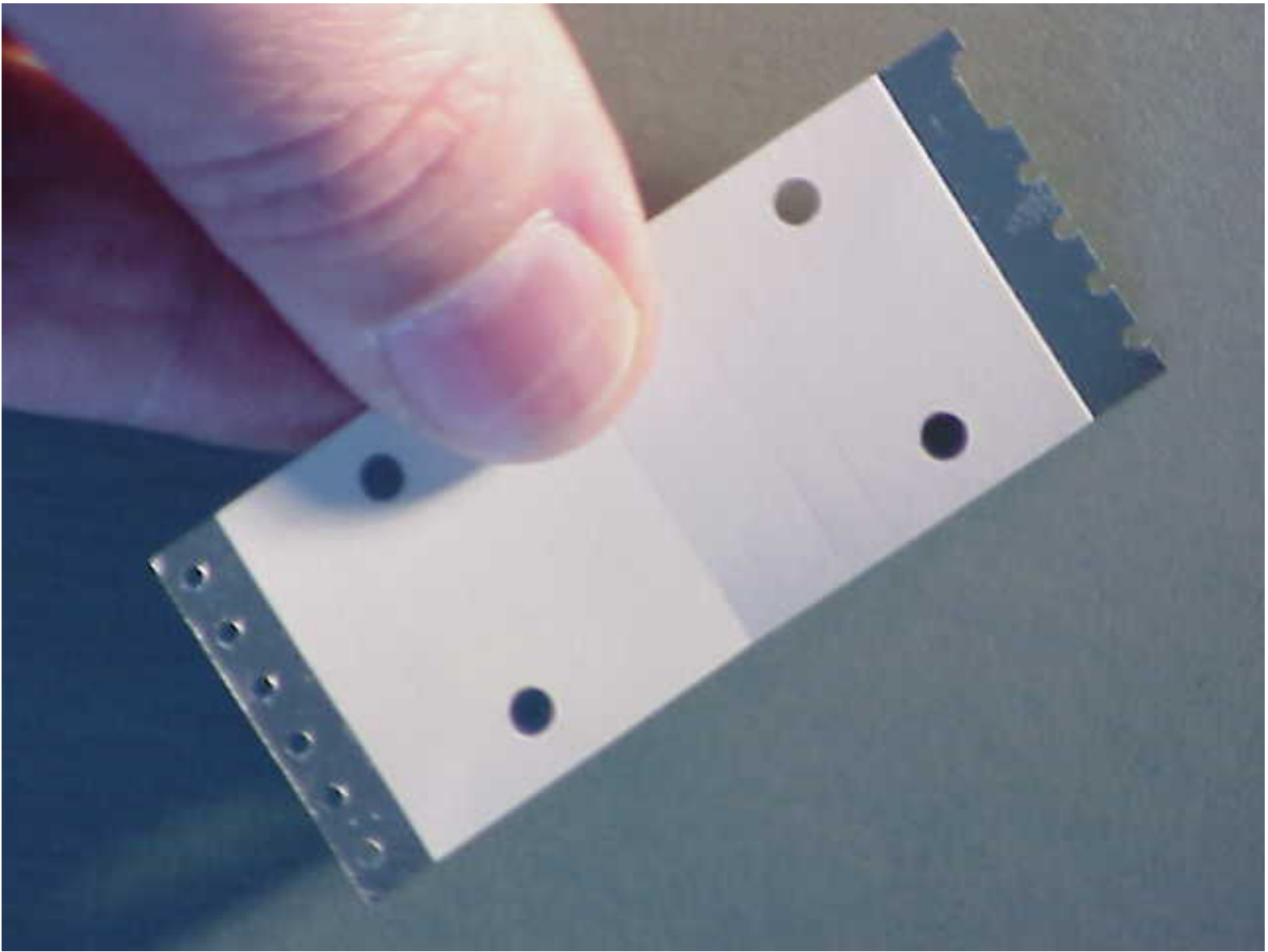
The HRS-5 Tape Splicing Tool is used for attaching the end of a depleted reel of components to the beginning of a new reel without stopping the pick and place machine.....Contents of HRS-5 Tool Kit includes: HRS-5 slicing tool, HRS4.3 cutting tool, 100pcs Slicing Tape, Cutting knife, and 100pcs of extra long splice for wider carrier tapes (optional use).



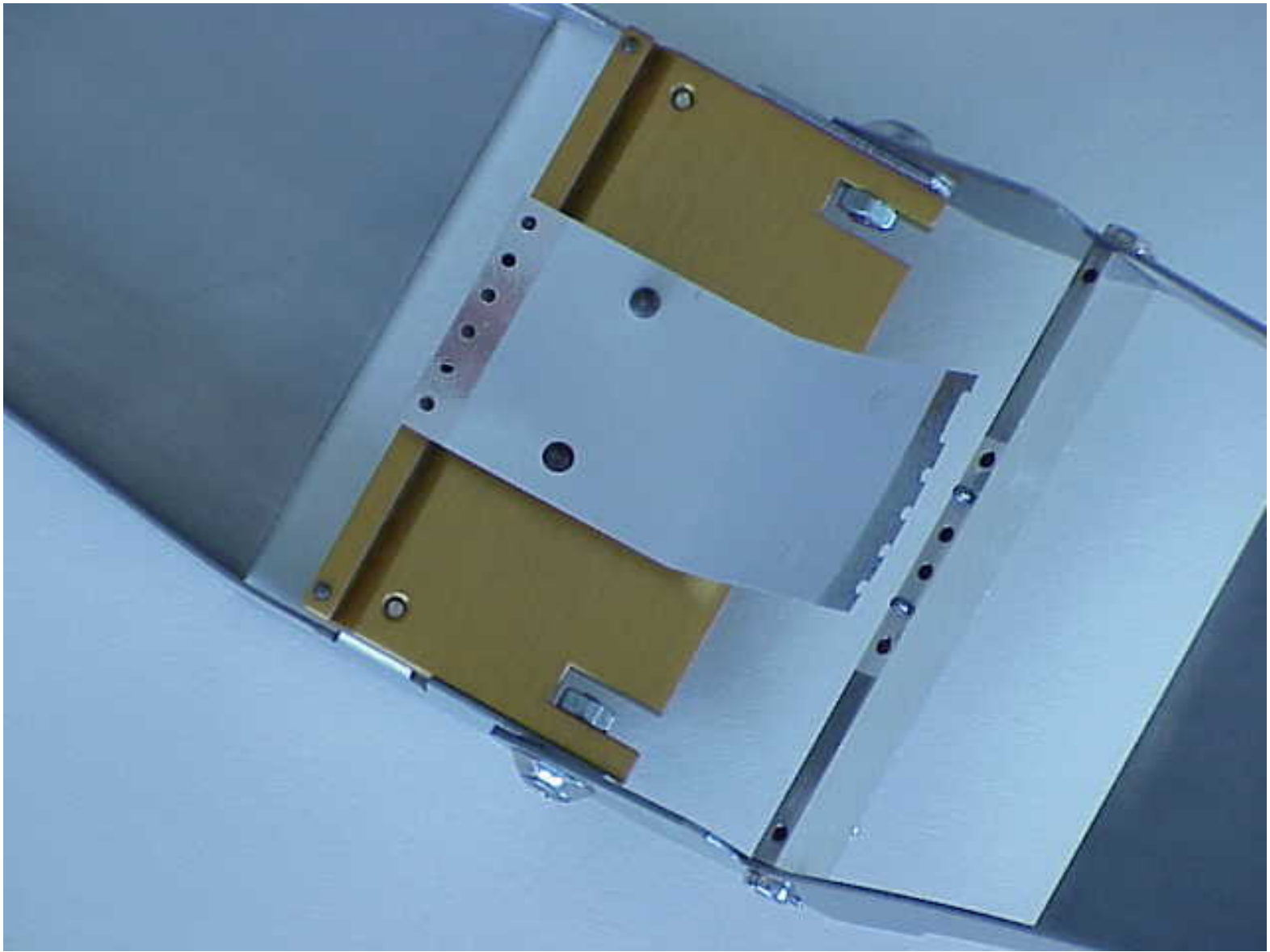
HRS4.3 Cutting Tool is specially designed for precise cutting of SMD Carrier Tapes prior to splicing. The HRS4.3 has alignment pegs for cutting through the center of the sprocket hole on the carrier. The HRS4.4 (not shown) cuts the carrier between the holes. Both tools are designed to cut all sizes of carrier from 8mm to 56mm wide. The HRS4.3 is included with the kit. The HRS-4.4 may be purchased optionally.



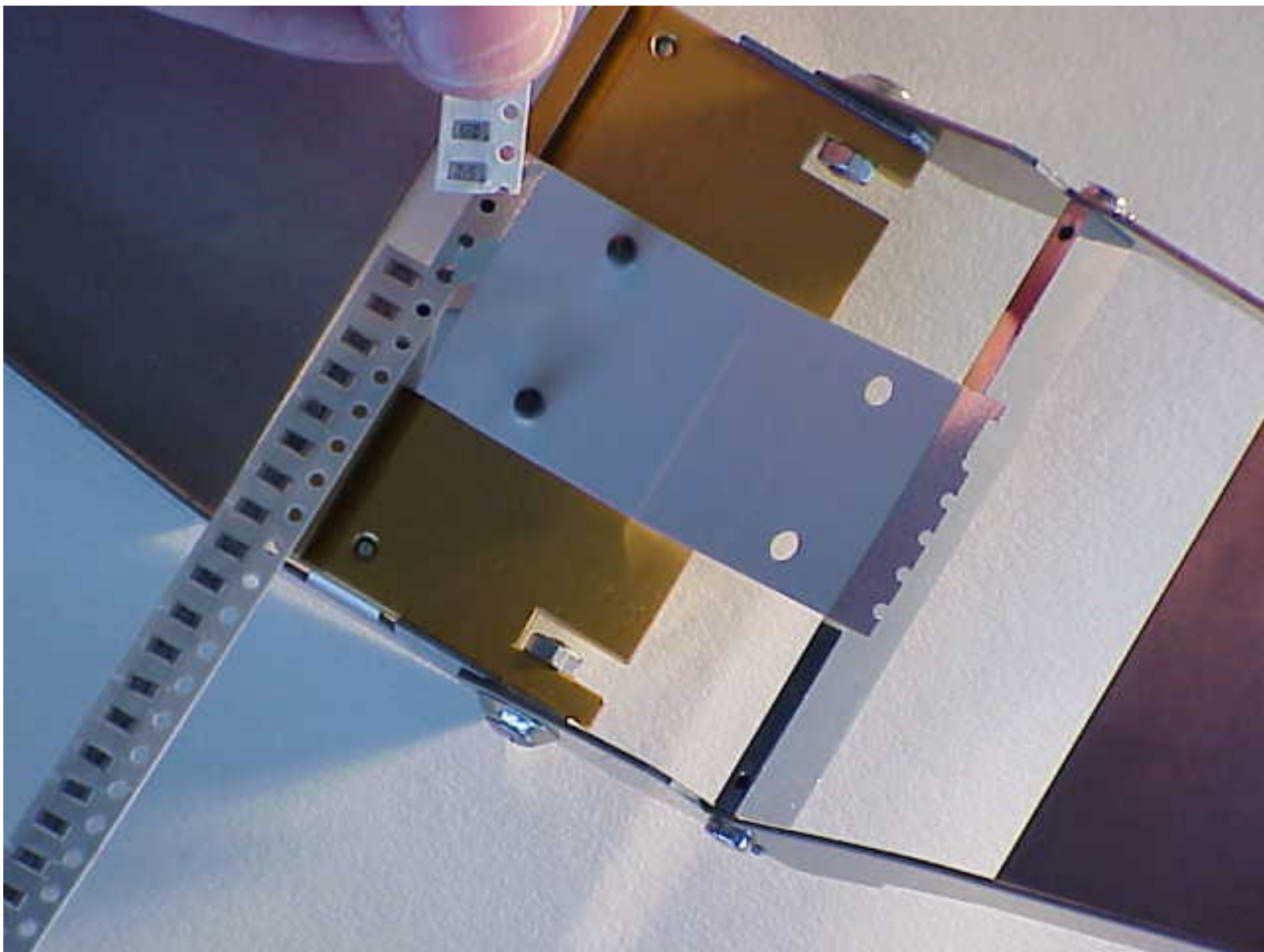
HRS 5.01 Slicing Tape. To begin the splicing procedure, first remove protective liners from both ends of the Slicing Tape.



Place Splicing Tape in HRS-5 Tool with closed circles over the pins.

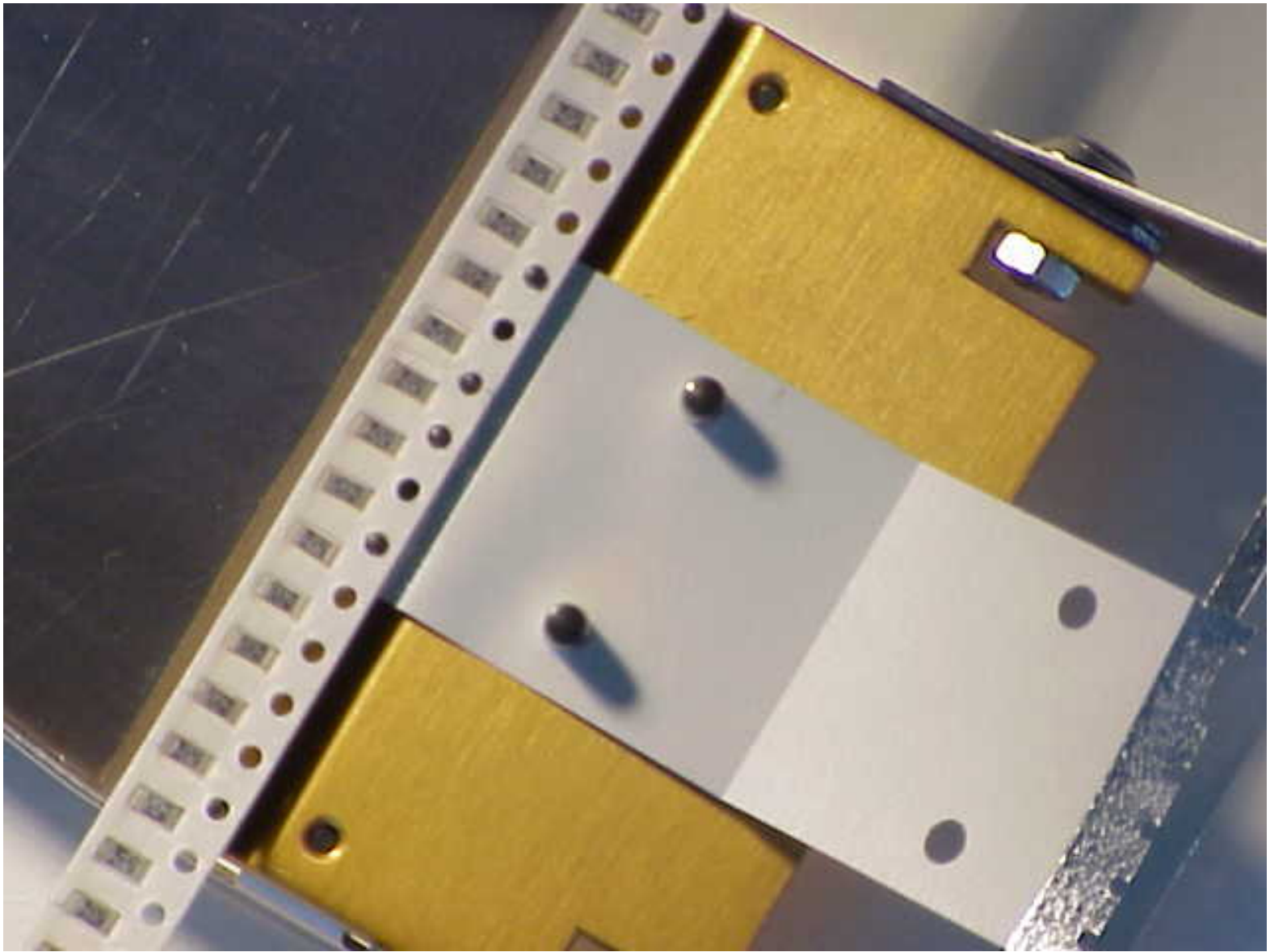


It is recommended to loosen the cover tape by lifting it with a knife about 1/8-inch (3mm) from beginning of the NEW ree. Place the carrier tape over the pins on the HRS-5.



Place end of OLD reel over the pins, to make a near seamless joint.

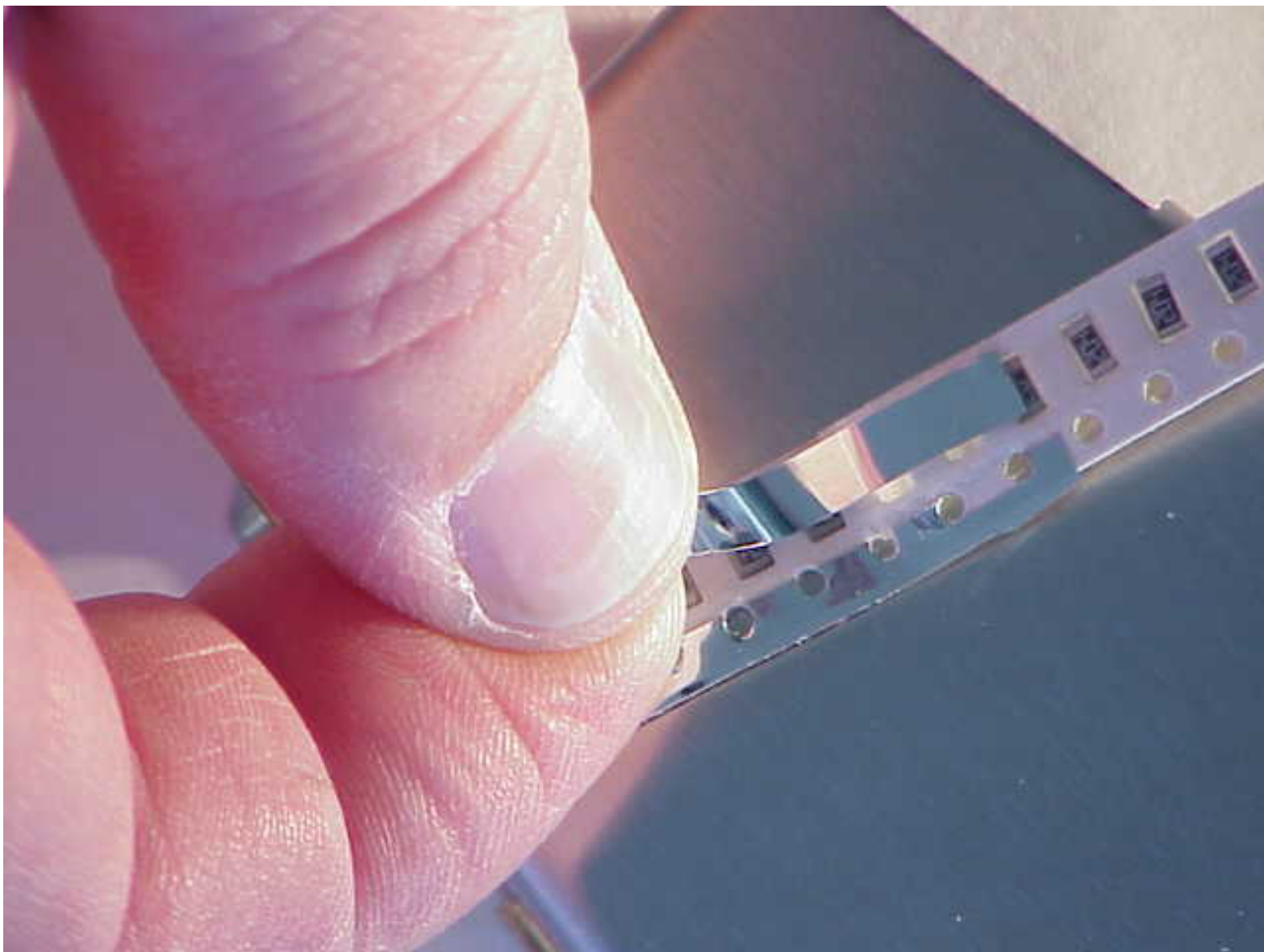




Close the HRS-5 Tool. Using a sharp knife, cut off excess Splicing Tape. Use the alignment notch on the HRS-5 to steady the knife blade as you cut off the excess Splicing Tape.

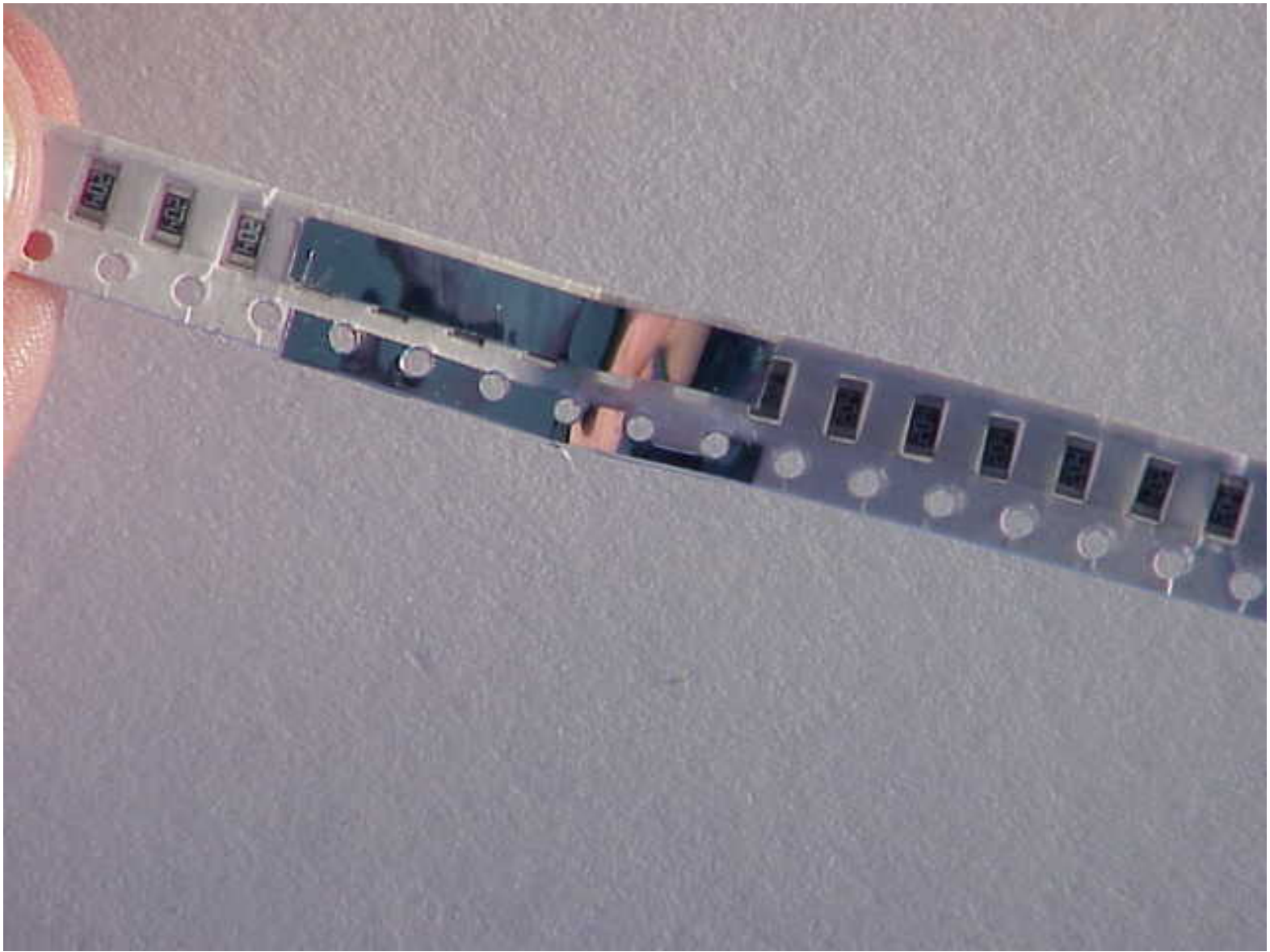


Place narrow strip of splicing tape over the covers of the joined tape. The narrow splicing tape is for 8mm carrier tape. Use the wider strip of splicing tape for >12mm carriers tape. Extra long splicing strips are included and are only necessary to use on very wide carrier tape.

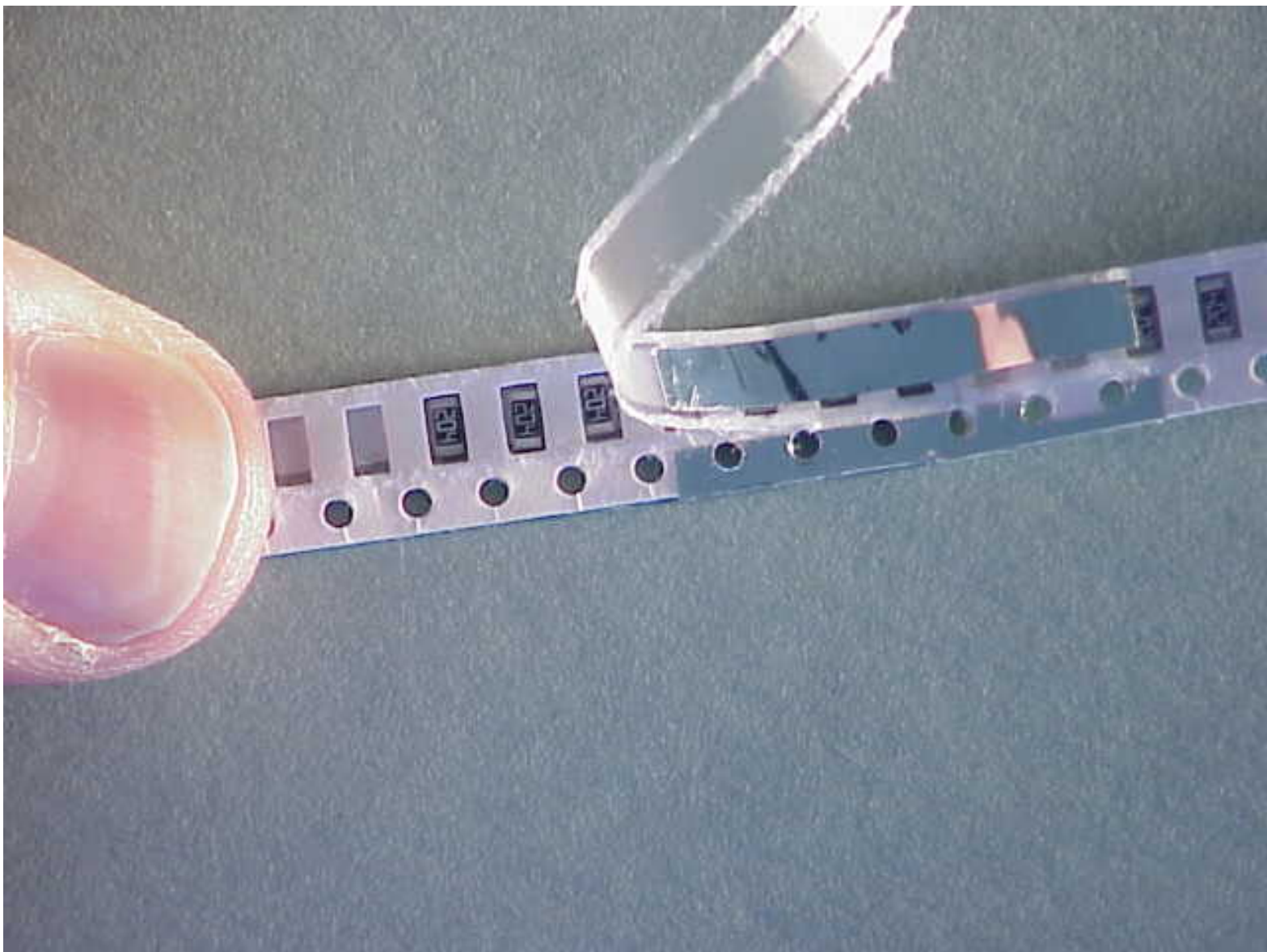


The Splicing procedure is now completed. Remove the joined carrier tape from the HRS-5 Splicing Tool and feed into pick and place machine without line shut-down.





Above is an example of the pull back of the joined cover tape as it travels over the spliced joint in the carrier tape.



---

TopLine • 95 Highway 22 W., Milledgeville, GA 31061, USA  
Tel: 1-478-451-5000 • Fax: 1-478-451-3000  
Toll Free USA/Canada (800) 776-9888  
email: [info@TopLine.tv](mailto:info@TopLine.tv)

©2010 TopLine. All Rights Reserved.



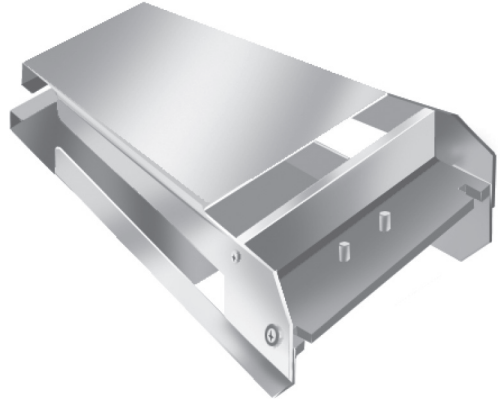
# SMD TAPE SPLICING TOOL

## PREVENTS LINE SHUTDOWN

www.tapesplicer.com



The HRS5 manual tape splicer joins together all sizes of SMD carrier tape. Use during pick & place assembly to splice the end of a depleted reel to the beginning of a fresh reel of components without line shutdown. Fits all tape widths without tooling changes. Joins 8, 12, 16, 24, 32 & 44mm tape. Splices plastic, paper, or metal carrier tape. Completely portable. Hand-held.

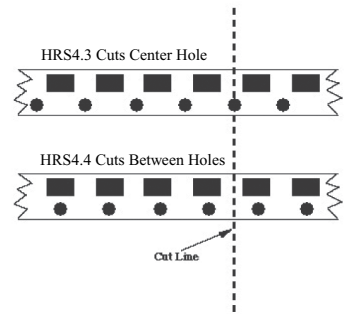


### HRS5 Tape Splicing Tool

Order No.	Description
-----------	-------------

210011	HRS5 Tool (Includes -100 pcs. HRS5.01 splicing tape and HRS4.3 cutting tool)
210003	Spare HRS4.3 Cutting Tool (Red)
210009	Spare HRS4.4 Cutting Tool (Green)
210002	HRS5.01 Splicing Tape (1000 pcs.) (with HRS4.02 cover tape included)
210005	Spare HRS4.02, 4.3x60mm Cover Tape (1000 pcs.) 8mm
210010	Spare HRS4.03, 7.3x60mm Cover Tape (500 pcs.) 12-44mm

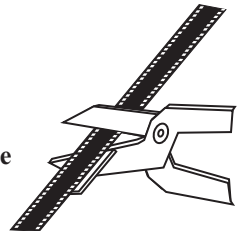
### Cutting Tool Diagram



### HOW TO USE

See website [www.tapesplicer.com](http://www.tapesplicer.com) for full color photos showing step-by-step instructions on how to use the HRS5.

Cuts SMD tape up to 24mm





# HRS-5 Tape Splicer

[www.tapesplicer.com](http://www.tapesplicer.com)

## HOW TO ORDER

### PAYMENT TERMS

- Credit Terms (Net 30) for established customers.
- American Express, Mastercard and VISA accepted.



### F.O.B. POINT AND SHIPPING

- F.O.B. Garden Grove, California. Please specify preferred method of shipment when placing order.

# TopLine®

e-mail [info@topline.tv](mailto:info@topline.tv)

[www.topline.tv](http://www.topline.tv) and [www.tapesplicer.com](http://www.tapesplicer.com)

95 Highway 22 W.

Milledgeville, GA 31061 USA

Toll Free USA/Canada 1-800-776-9888

Tel 1-478-451-5000

Fax 1-478-451-3000

© 2010. TopLine. All Rights Reserved