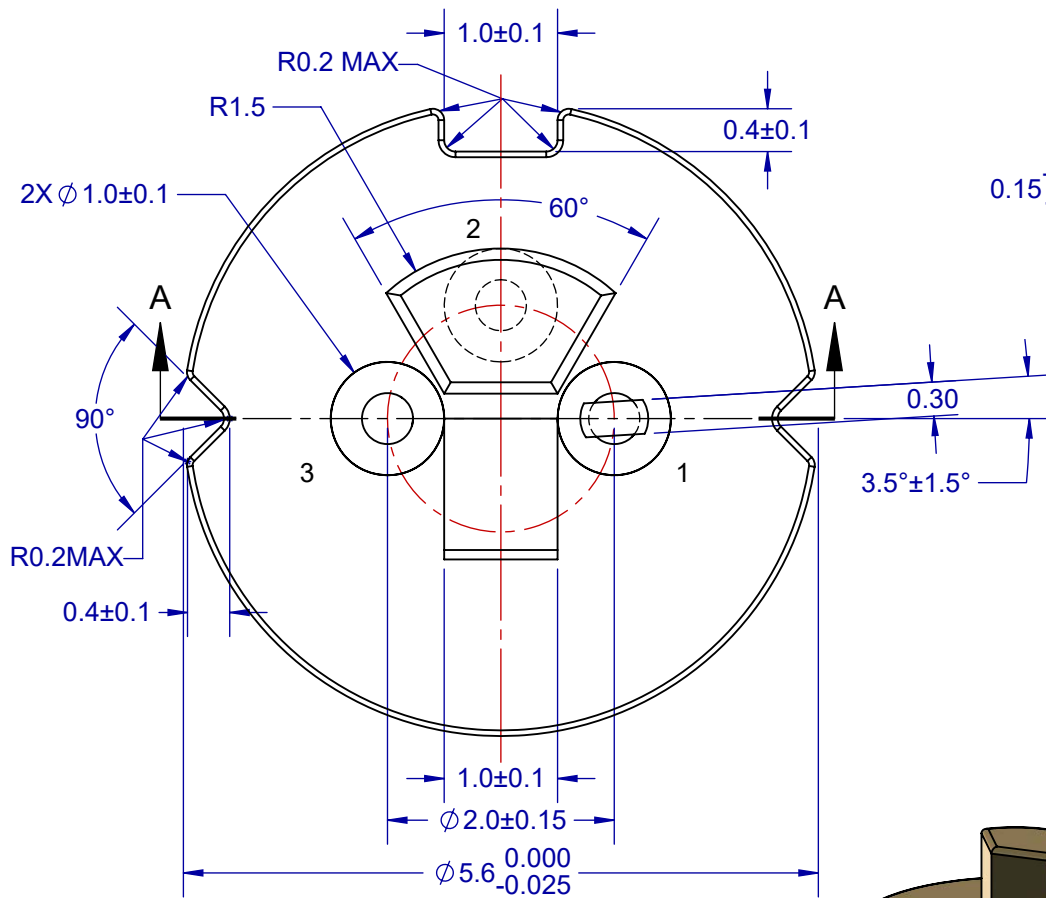
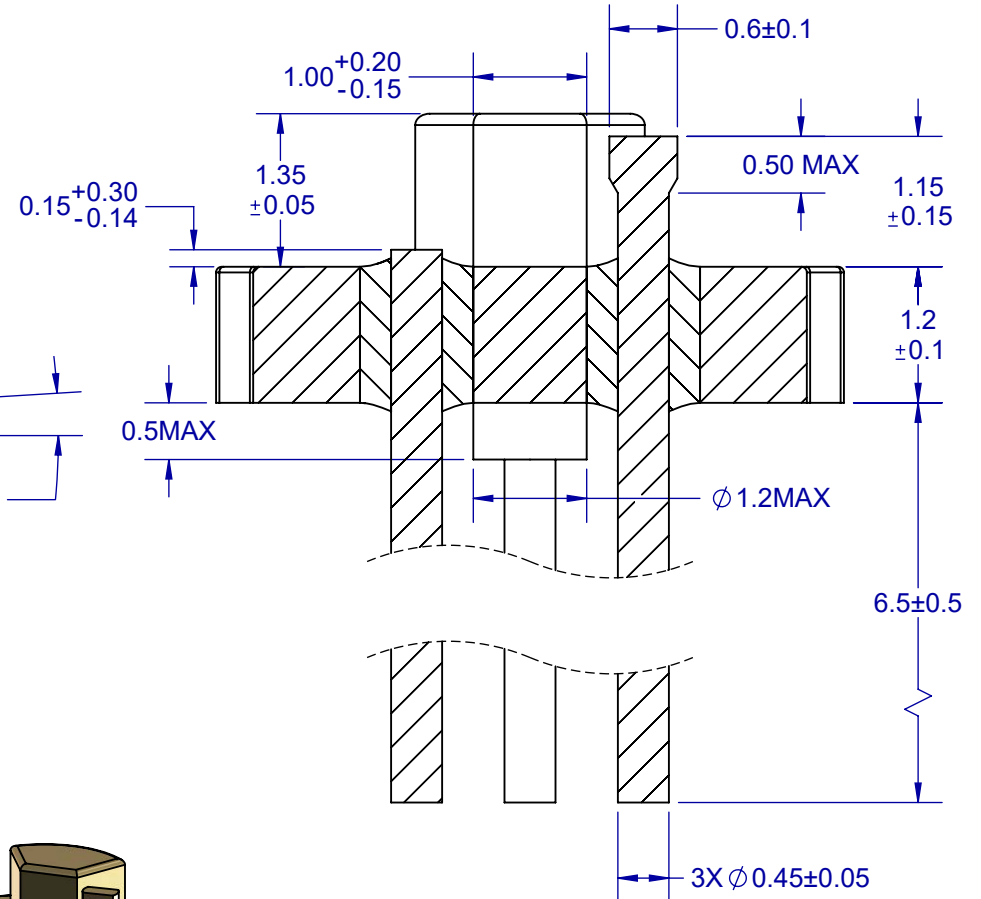
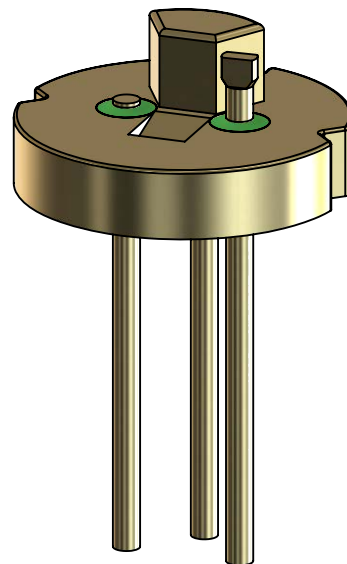


TOP VIEW



**PIN 2 GROUNDED
TO CASE**



**SECTION A-A
SCALE 15 : 1**

Notes: (Unless Otherwise Specified)

1. DIMENSIONS: MM.
2. BODY: KOVAR ASTM F45 ALLOY 42.
3. LEADS: KOVAR ASTM F15.
4. GLASS: 7052 OR EQUIVALENT.
5. PLATING: Ni 100~300 Micro-inch.
Au 50 Micro-inch MIN.

APPROVALS	DATE	TopLine®			
DRAWN T. Au	04/26/2024				
ENG M. Hart	04/26/2024	TITLE TO-56 HEADER 3L NAIL HEAD (2L+1G)			
MFG		SCALE	SIZE	DRAWING NO.	REV
QA		15:1	A	140056	A
CUST		DO NOT SCALE DRAWING			SHEET 1 OF 1
REVISED					