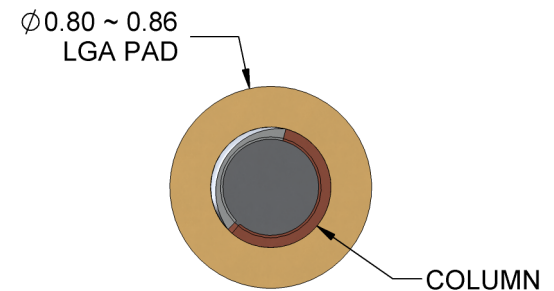
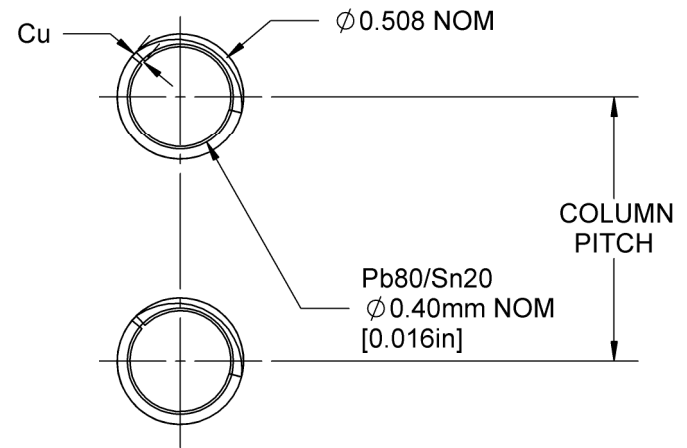
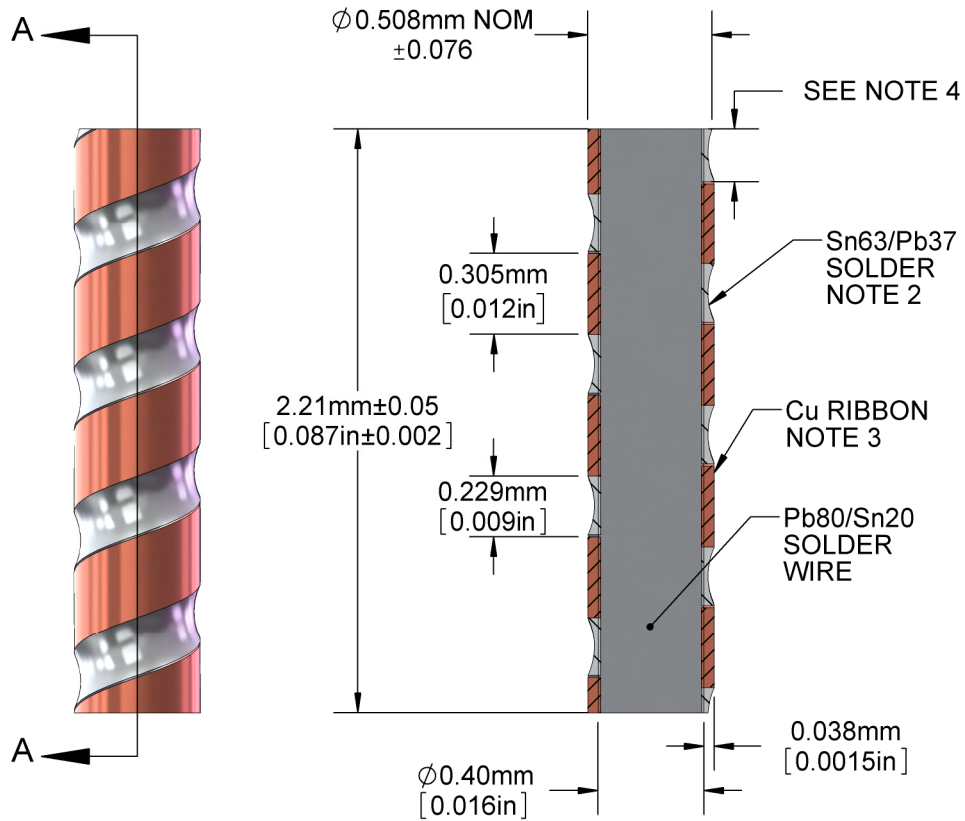


SECTION VIEW



LGA - LAND GRID ARRAY PAD PLATING Ni-Au

NOTES: (Unless Otherwise Specified).

- 1) DIMENSIONS mm [INCHES].
- 2) THICKNESS Sn63/Pb37 SOLDER COAT 6~25um [0.25~1.0mil].
- 3) Cu ALLOY C10100 - OFE (CDA-101). 99.99% PURE.

APPROVALS	DATE	TopLine®			
DRAWN T. Au	4/18/2018				
ENG M. Hart	4/18/2018	TITLE CG8020C20x87 CCGA SOLDER COLUMN			
MFG		SCALE	SIZE	DRAWING NO.	REV
QA		35:1	A	802087	B
CUST		DO NOT SCALE DRAWING			SHEET 1 OF 1
REVISED					