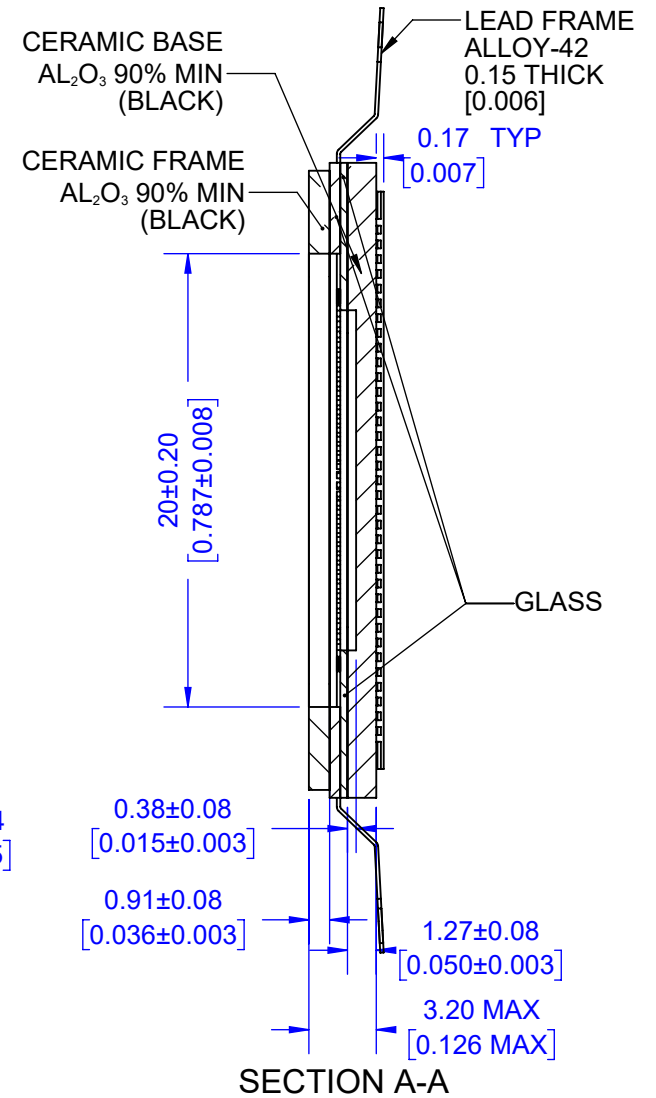


TIE-BAR LEAD FRAME

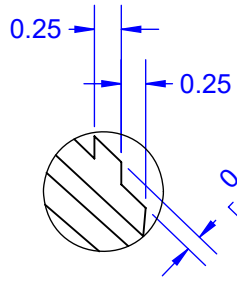


Notes: (Unless Otherwise Specified).

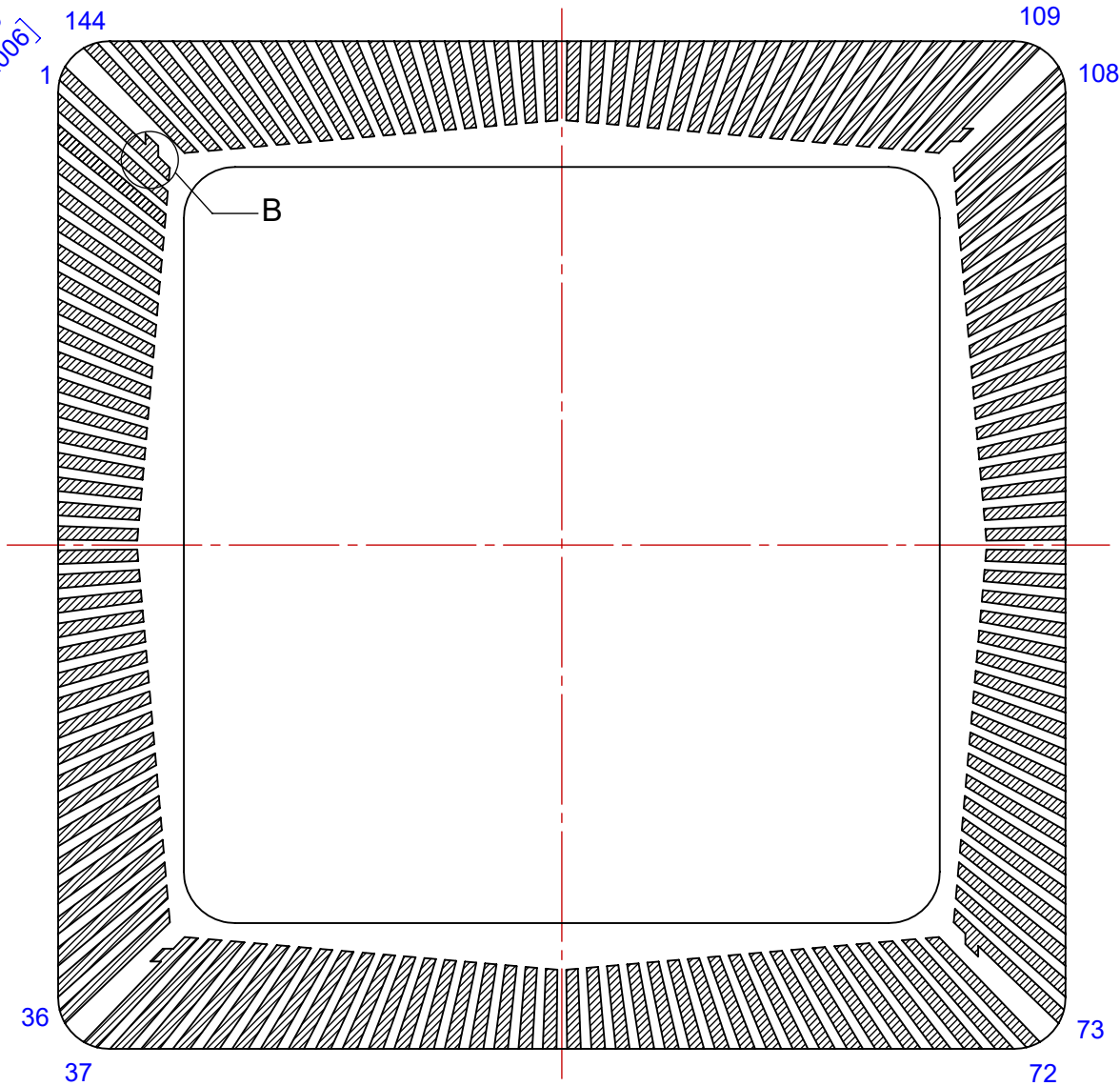
- 1) DIMENSIONS: MM [INCH].
- 2) FLAT LEADS ON ALLOY 42 TIE BAR.
- 3) ALL EXPOSED METAL GOLD PLATED (Au).
60 MICRO-INCH THICK GOLD.

APPROVALS	DATE	TopLine®			
DRAWN T. Au	08/13/2024				
ENG M. Hart	08/13/2024	SCALE	SIZE	DRAWING NO.	REV
MFG		4:1	A	161440	A
QA		DO NOT SCALE DRAWING			SHEET 1 OF 5
CUST					
REVISED					

BONDING DIAGRAM



TARGET MARK
No. 1, 37, 73, 109



No.	ANGLE
1	0.603°
2	2.162°
3	3.366°
4	4.917°
5	6.120°
6	7.666°
7	8.855°
8	10.395°
9	11.573°
10	13.092°
11	14.261°
12	15.769°
13	16.917°
14	18.399°
15	19.535°
16	20.993°
17	22.113°
18	23.540°
19	24.639°
20	26.038°
21	27.112°
22	28.484°
23	29.536°
24	30.875°
25	31.900°
26	33.203°
27	34.199°
28	35.472°
29	36.442°
30	37.676°
31	38.621°
32	39.817°
33	40.730°
34	41.892°
35	42.779°
36	43.902°

TopLine®

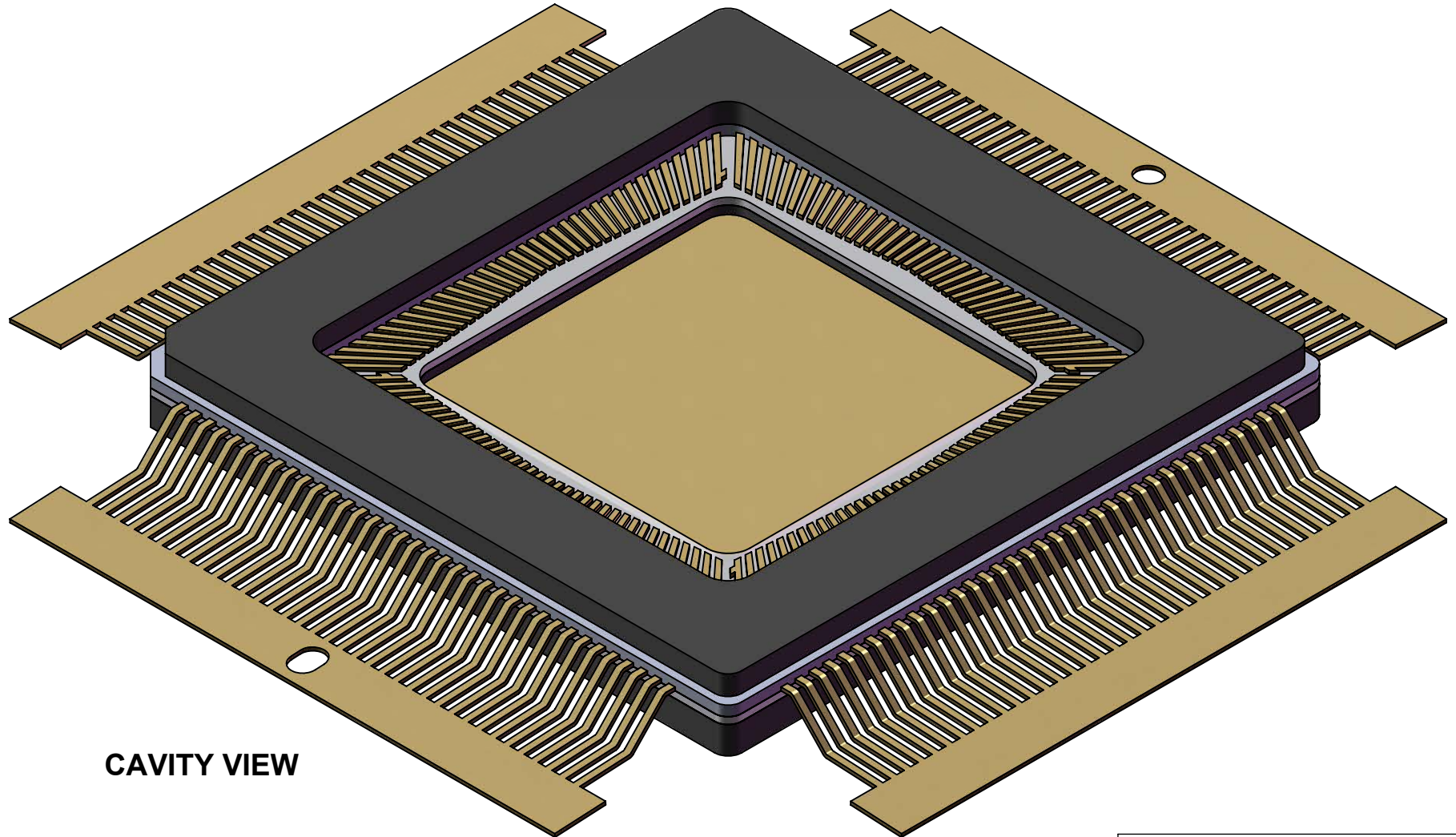
TITLE CERQUAD144G25-N591
CAV 15x15mm - GULL WING

SCALE 7:1	SIZE A	DRAWING NO. 161440	REV A
--------------	-----------	-----------------------	----------

DO NOT SCALE DRAWING

SHEET 2 OF 5

MODEL TOP



CAVITY VIEW

TopLine[®]

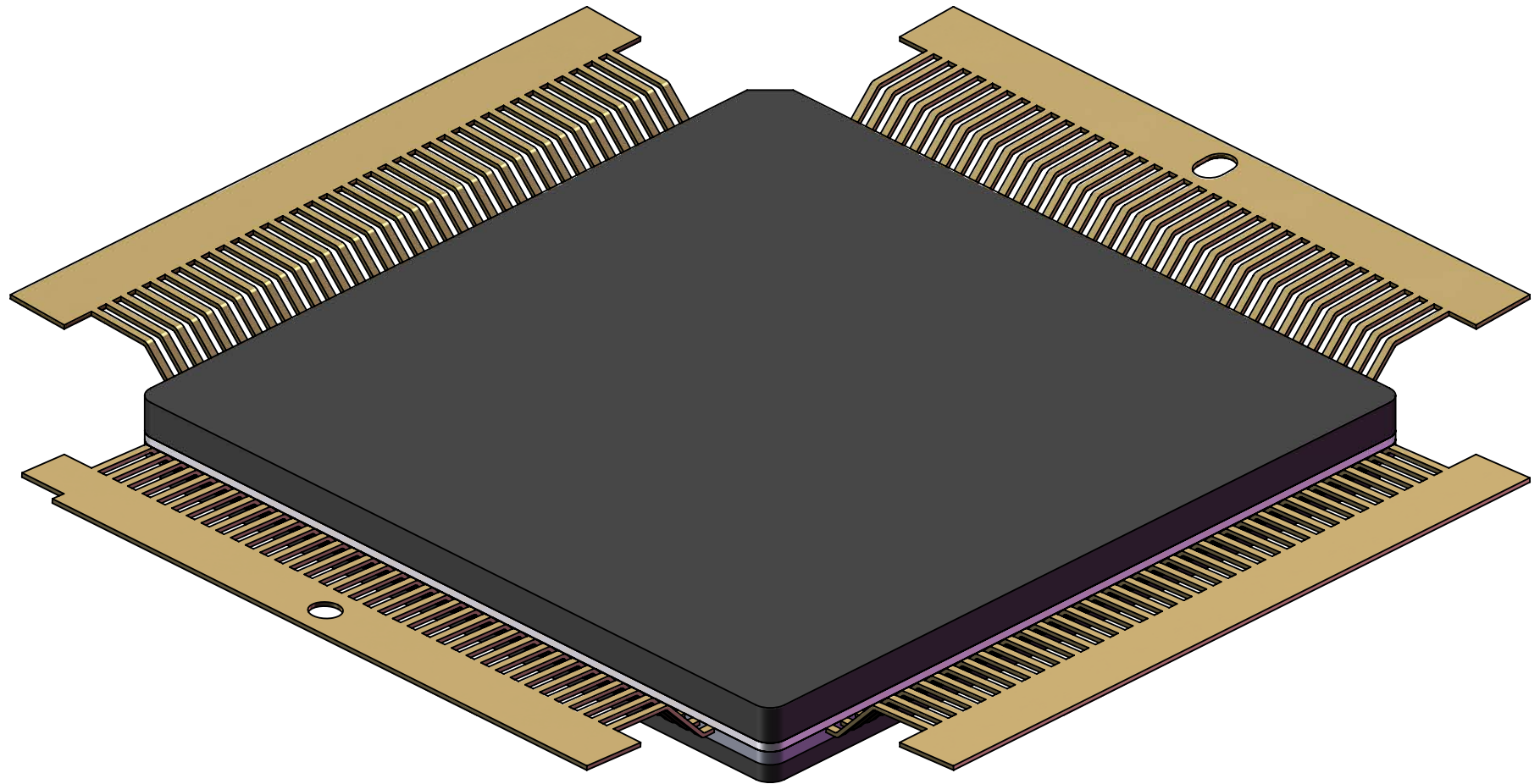
TITLE CERQUAD144G25-N591
CAV 15x15mm - GULL WING

SCALE	SIZE	DRAWING NO.	REV
5:1	A	161440	A

DO NOT SCALE DRAWING

SHEET 3 OF 5

MODEL BOTTOM



TopLine[®]

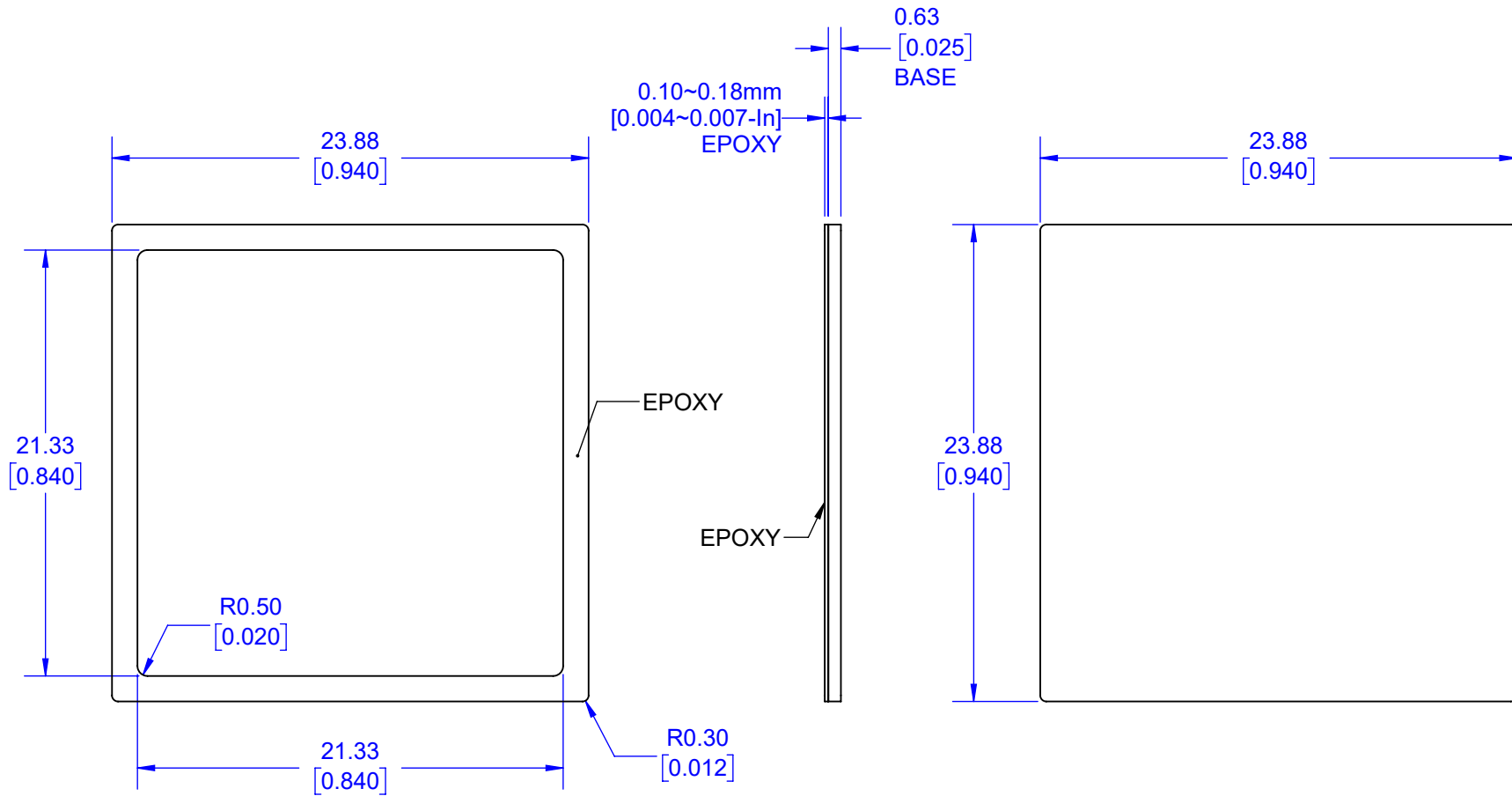
TITLE CERQUAD144G25-N591
CAV 15x15mm - GULL WING

SCALE 5:1	SIZE A	DRAWING NO. 161440	REV A
--------------	-----------	-----------------------	----------

DO NOT SCALE DRAWING

SHEET 4 OF 5

LID (OPTIONAL)



NOTES: Unless otherwise described.

1. DIMENSIONS: mm [INCH]
2. LID MATERIAL: BLACK CERAMIC 90~96% Al₂O₃.
3. EPOXY ADHESIVE: MEG165 OR EQUIVALENT.
4. CURE TIME: 60 MINUTES FOR 165~175°C UNDER 5~50 PSI.

TopLine[®]			
TITLE		CERAMIC LID EPOXY SEAL	
SCALE	SIZE	DRAWING NO.	REV
3:1	A	180144	A
DO NOT SCALE DRAWING			SHEET 5 OF 5