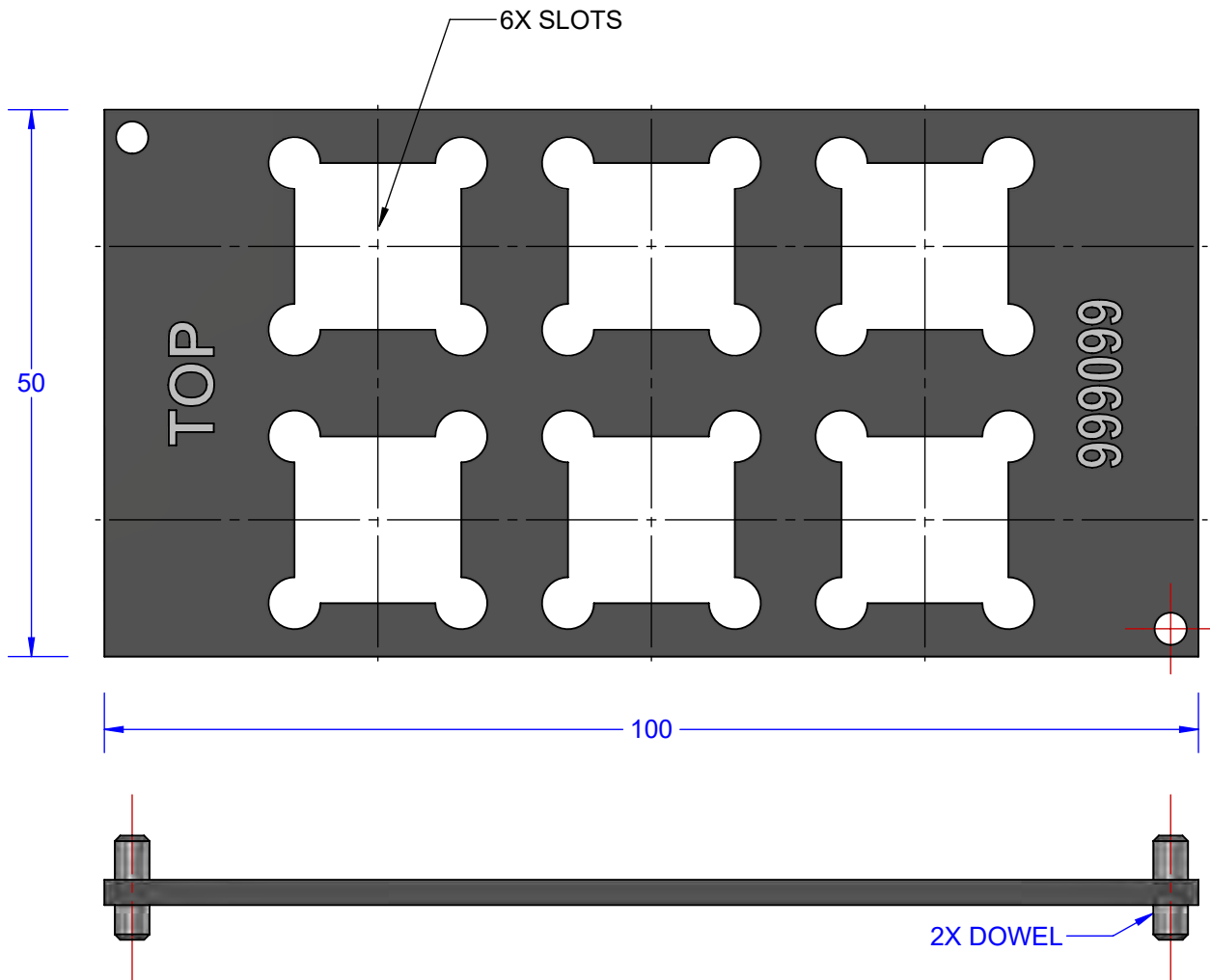
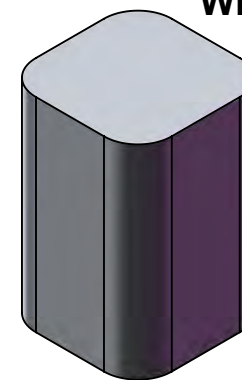


JIG FIXTURE FOR 15mm GLASS BGA



ACCESSORIES INCLUDED	
QTY	DESCRIPTION
6	PRESSURE WEIGHTS 12.7 x 12.7 x 19.0mm
1	Vacuum Pick up Tool

**MODEL
PRESSURE
WEIGHT**



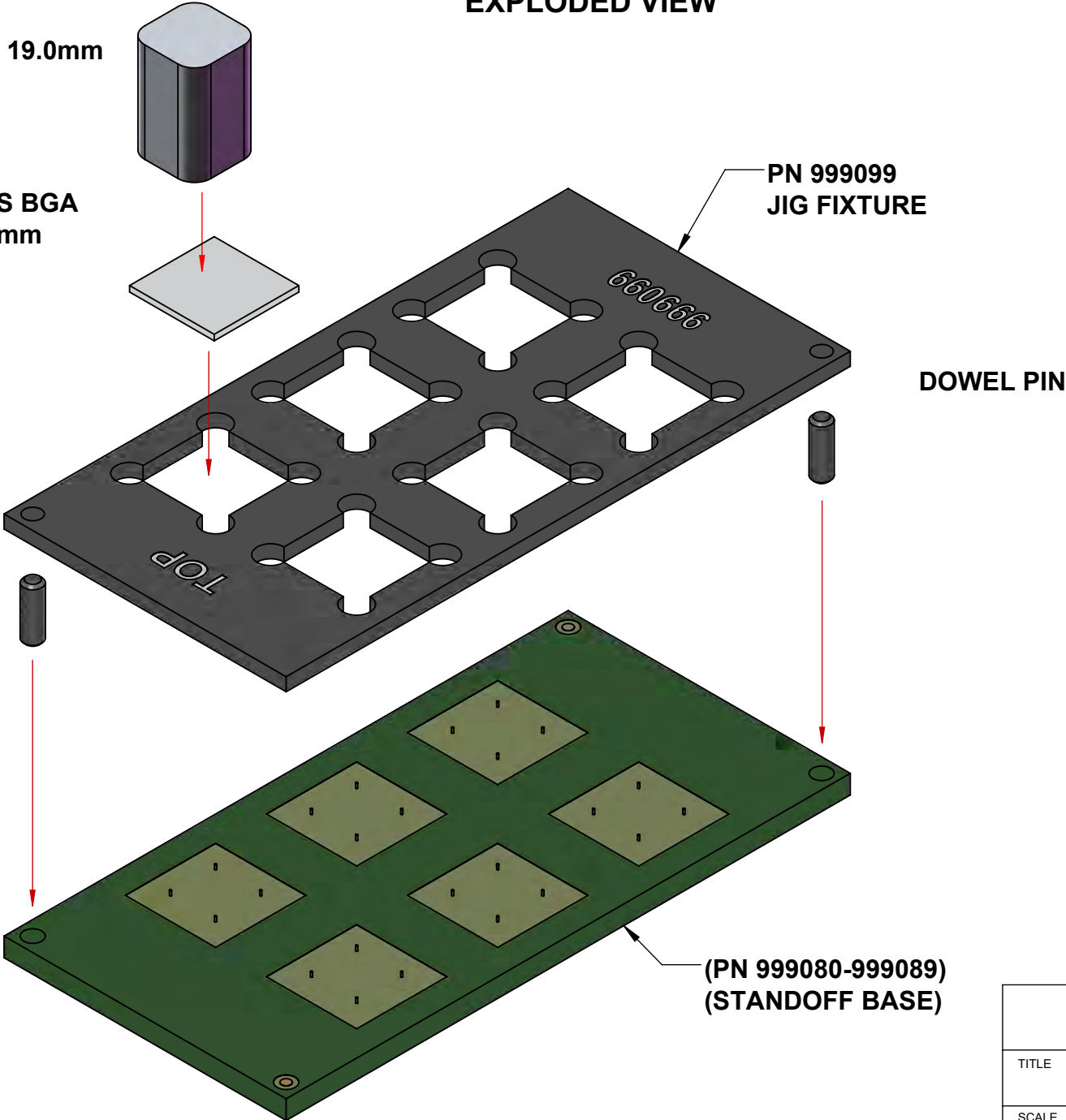
NOTES: (UNLESS OTHERWISE SPECIFIED).
1. DIMENSIONS: mm (INCH).

APPROVALS	DATE	TopLine®			
DRAWN T.Au	9/26/2021				
ENG M. Hart	9/26/2021	TITLE JIG FIXTURE 15mm GLASS BGA			
MFG		SCALE	SIZE	DRAWING NO.	REV
QA		3:2	A	999099	A
CUST		DO NOT SCALE DRAWING			SHEET 1 OF 4
REVISED					

EXPLODED VIEW

WEIGHT
12.7 x 12.7 x 19.0mm

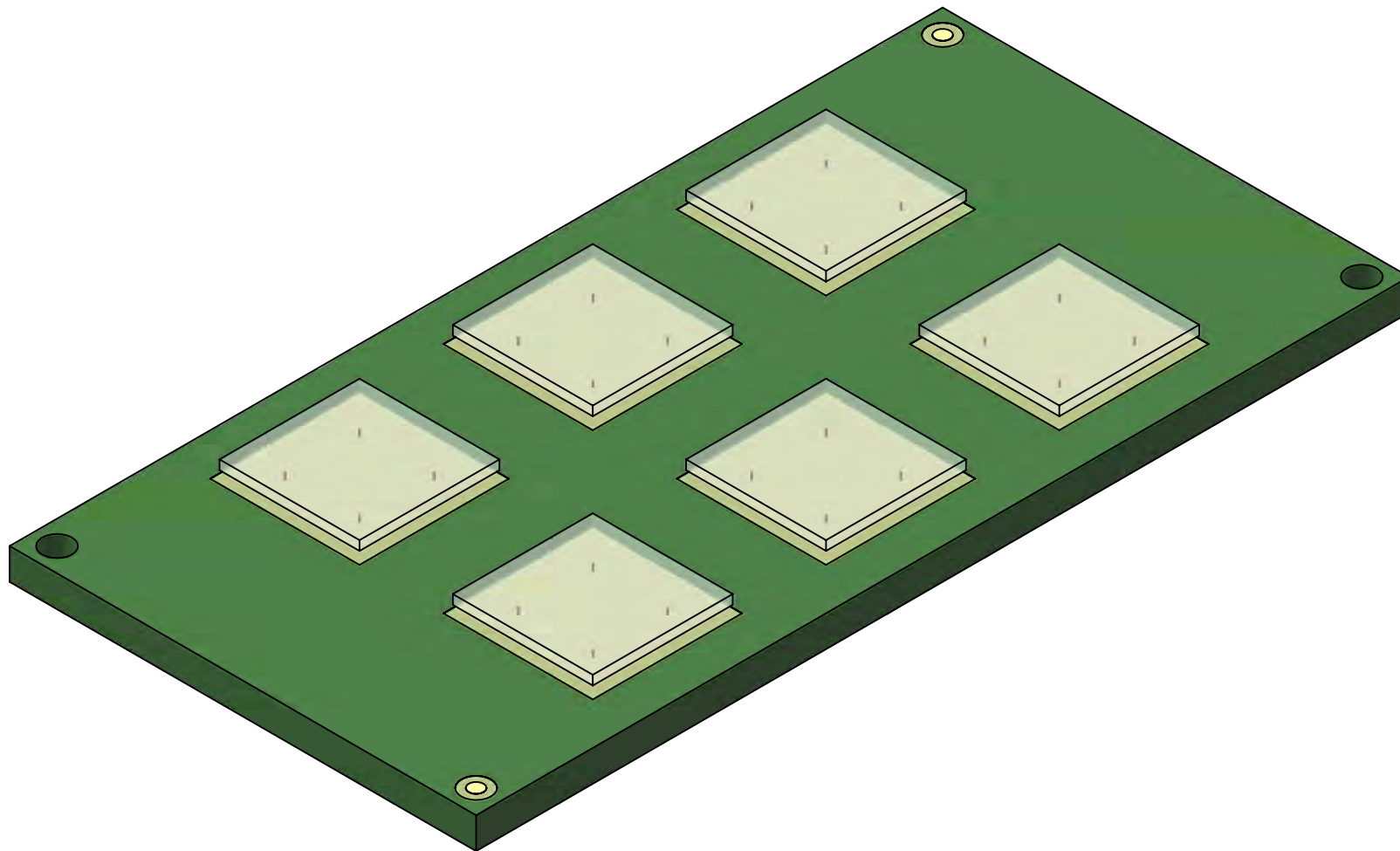
GLASS BGA
15x15mm



(PN 999080-999089)
(STANDOFF BASE)

TopLine[®]			
TITLE		JIG FIXTURE 15mm GLASS BGA	
SCALE	SIZE	DRAWING NO.	REV
3:2	A	999099	A
DO NOT SCALE DRAWING			SHEET 2 OF 4

**AFTER ASSEMBLY
GLASS COMPONENTS ARE GLUED
TO STAND OFF PINS**



TopLine[®]

TITLE JIG FIXTURE
15mm GLASS BGA

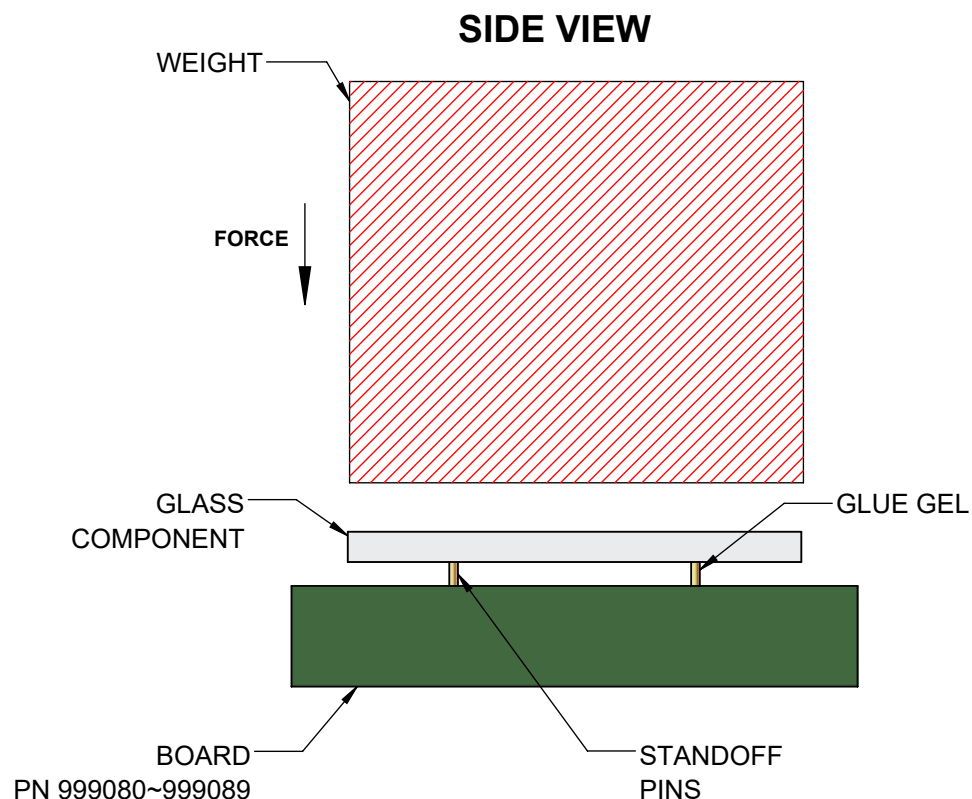
SCALE 2:1	SIZE A	DRAWING NO. 999099	REV A
--------------	-----------	-----------------------	----------

DO NOT SCALE DRAWING

SHEET 3 OF 4

ASSEMBLY INSTRUCTIONS

1. Place Jig Fixture 999099 on top of BGA Standoff Board.
2. Dispense small amount of Cyanoacrylate Glue Gel on tips of the stand off pins.
3. Gently place Glass Component on the stand off pins using vacuum pick up tool
4. Place 5 to 25 grams weight on top of each glass component to apply pressure to glass during curing.
5. Remove the weights and Jig Fixture after the glue cures.
6. Proceed to test underfill.



TopLine®

TITLE
JIG FIXTURE
15mm GLASS BGA

SCALE 4:1	SIZE A	DRAWING NO. 999099	REV A
--------------	-----------	-----------------------	----------

DO NOT SCALE DRAWING

SHEET 4 OF 4