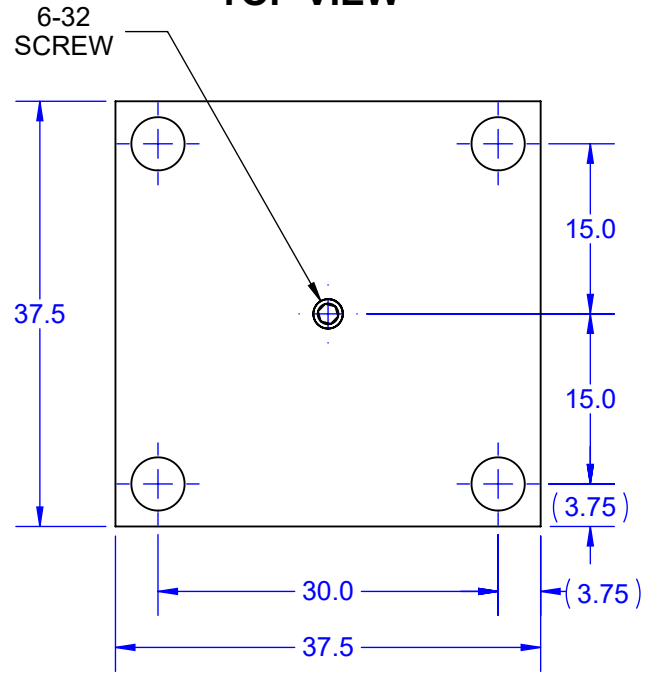
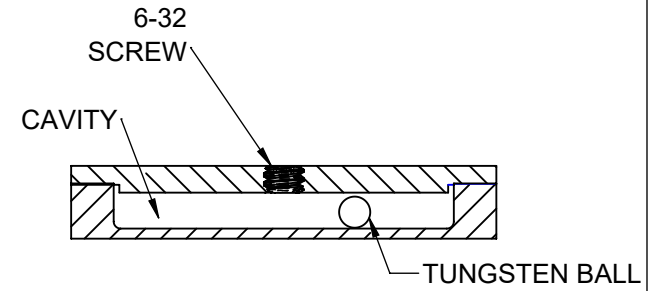
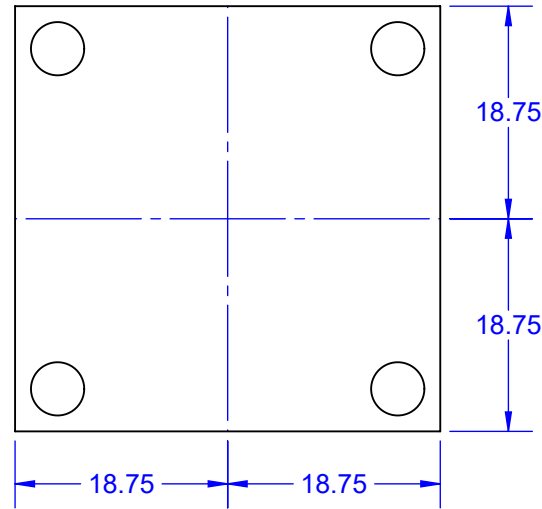


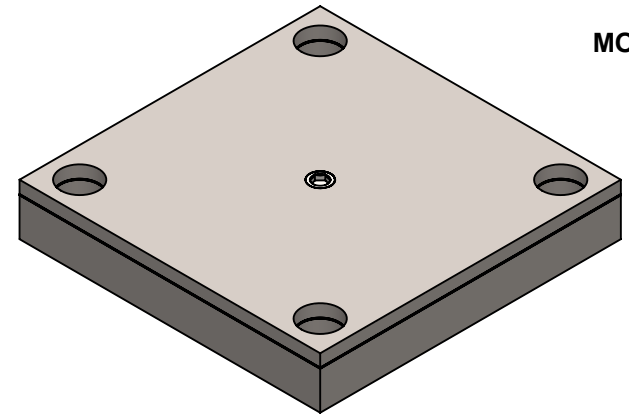
TOP VIEW



BOTTOM VIEW



MODEL




U.S. PATENTS 10041558,
10021779, 10704639,
10704639, D842351

DIMENSION AND WEIGHT (MASS) TABLE

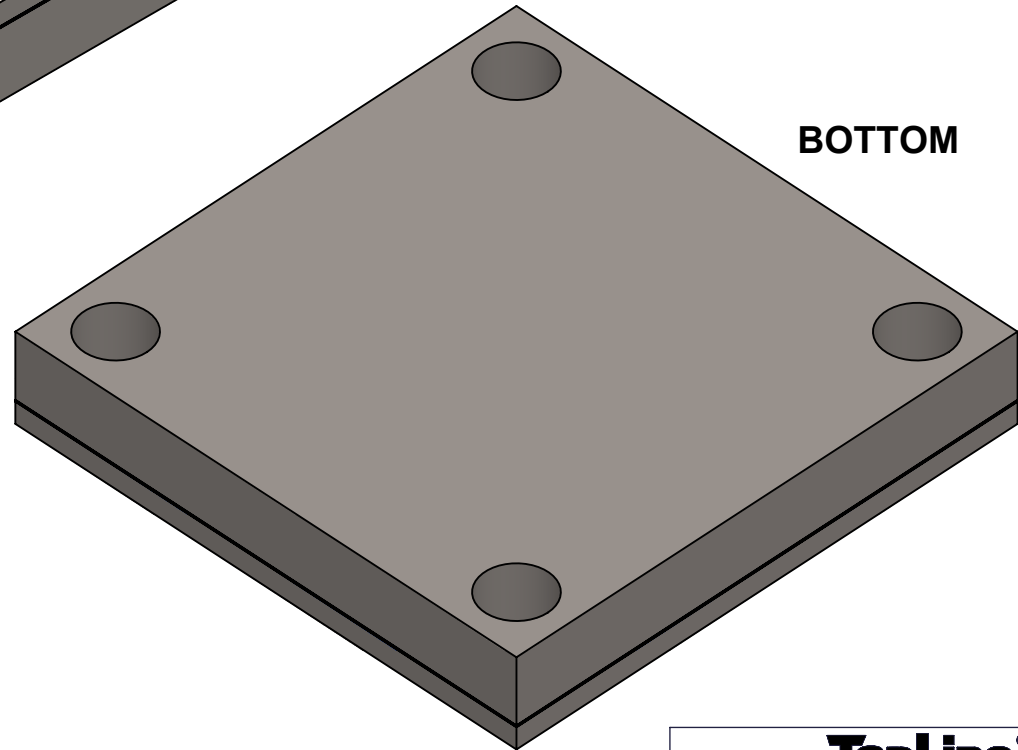
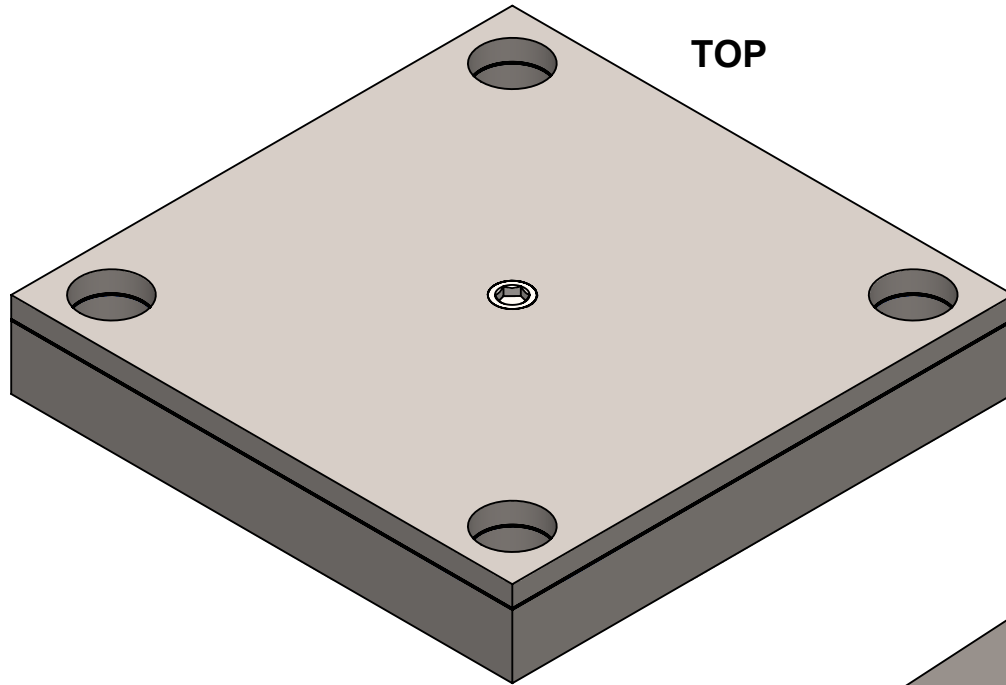
H HEIGHT ±10%	PCB MASS NOM	TUNGSTEN BALLS IN CAVITY				Est. PID MASS	SCREW ADJUST	SCREW HEX HEAD
		Ø DIA	Per Ball	QTY	MASS			
7.5mm	150g	2.5mm	0.143g	~105	15g	~30g	6-32	1/16"

NOTES: (Unless Otherwise Specified).

1. DIMENSIONS: MM.
2. MOUNTING SCREW: M4 or 8-32.
3. ALTERNATIVE MOUNTING ADHESIVE (GLUE).

APPROVALS	DATE				
DRAWN T. Au	4/30/2023				
ENG M. Hart	4/30/2023	TITLE FS15SQ37.5x7.5A PID VIBRATION DAMPER			
MFG					
QA		SCALE 1:1	SIZE A	DRAWING NO. 120158	REV A
CUST		DO NOT SCALE DRAWING			SHEET 1 OF 3
REVISED					

MODEL



NOTES:

1. CONTACT TOPLINE FOR OTHER MOUNTING OPTIONS.

TopLine[®]

TITLE FS15SQ37.5x7.5A
PID VIBRATION DAMPER

SCALE 3:2	SIZE A	DRAWING NO. 120158	REV A
--------------	-----------	-----------------------	----------

DO NOT SCALE DRAWING

SHEET 2 OF 3

<u>F</u>	<u>S</u>	<u>15</u>	<u>SQ</u>	<u>37.5x</u>	<u>7.5</u>	<u>A</u>
Series	Mounting on PCB	Tungsten Payload Grams	Exterior Shape	XY Size	Height	Version/Option
<u>Filled</u>	<u>Mounting Style</u>	<u>Code Grams</u>	<u>Code Shape</u>	<u>Code Size</u>	<u>Code Height</u>	<u>Code Version</u>
F = FR4	S = SCREW MOUNT A = ADHESIVE GLUE	15 = 15gm Other Mass Available	SQ Square R Rectangle C Cylindrical T Toroid Z Custom	37.5X = 37.5mm SQ Other Sizes Available	7.5 = 7.5mm Other Sizes Available	A = STANDARD Other Version Available
<u>Empty</u>						
E = FR4 Case						

Order Number

<u>1</u>	<u>2</u>	<u>015</u>	<u>8</u>
DESCRIPTION	Mount Style	Mass (gm) 9 = Decimal	Option Code
<u>Code</u> <u>Description</u>	<u>Code</u> <u>Description</u>	<u>Code</u> <u>MASS</u>	<u>Code</u> <u>Option</u>
1 = Filled PID	2 = Screw 3 = Adhesive 9 = Custom 0 = Master DWG	015 = 15 gm	8 = VERSION A

TopLine®

TITLE FS15SQ37.5x7.5A
PID VIBRATION DAMPER

SCALE NONE	SIZE A	DRAWING NO. 120158	REV A
---------------	-----------	-----------------------	----------