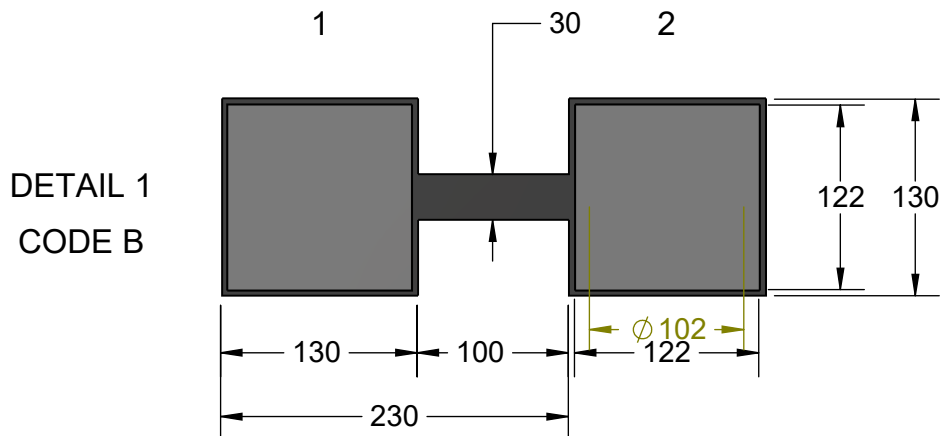
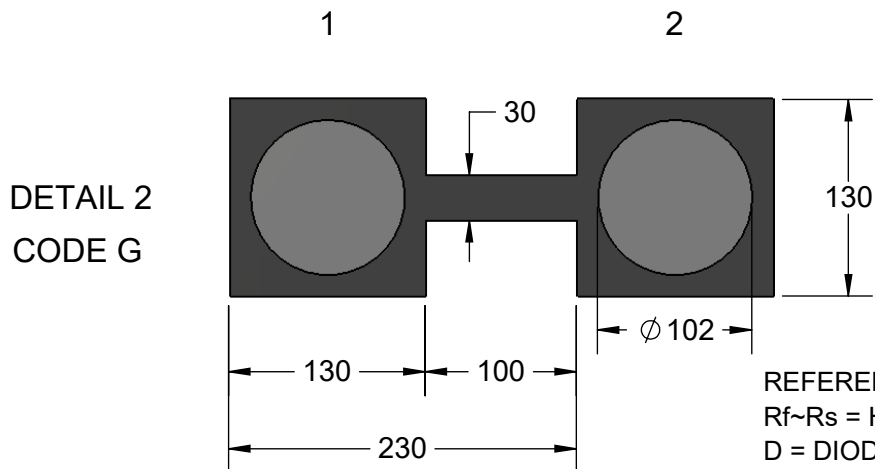


### BONDING PAD

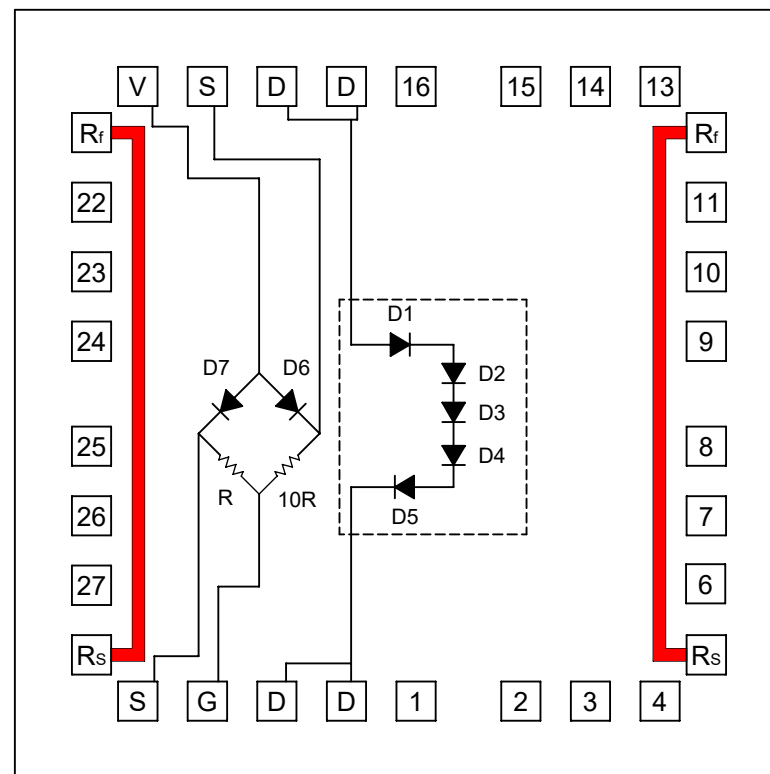


### BALL READY



REFERENCE:  
 Rf-Rs = HEATER Si RESISTIVE  
 D = DIODE  
 V = +VOLTAGE  
 G = GROUND  
 S = TEMPERATURE SENSE

### PST1 THERMAL DIE 2.5mm x 2.5mm



#### NOTES:

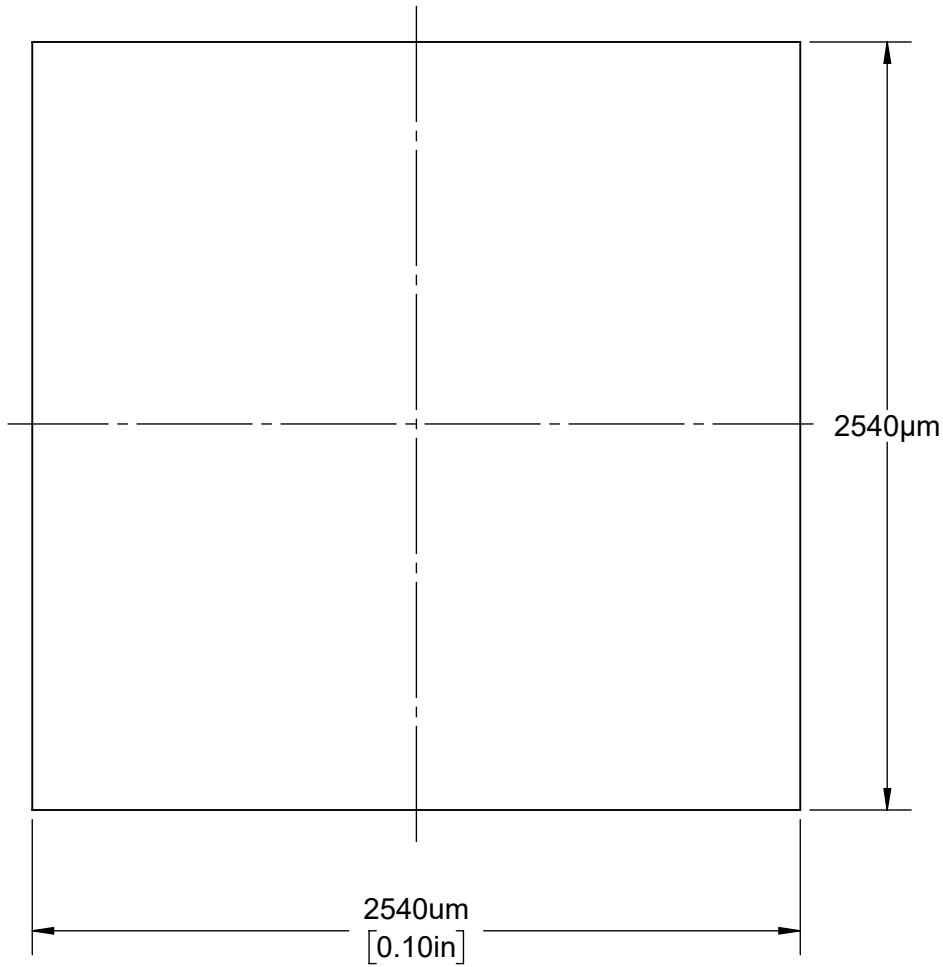
- 1) DIMENSIONS IN MICRONS ( $\mu\text{m}$ ) OR AS SPECIFIED.
- 2) THICKNESS: 635 $\mu\text{m}$  (OTHER AVAILABLE).
- 3) PASSIVATION: NITRIDE 10KA THICKNESS (1.0 $\mu\text{m}$ ).
- 4) PACKAGING: STANDARD WAFFLE PACK (TRAY).
- 5) PAD METAL THICKNESS: 17KA (1.7 $\mu\text{m}$ ).
- 6) SILICON ORIENTATION 1-1-1.
- 7) SILICON TYPE P.

#### PART NUMBER TABLE

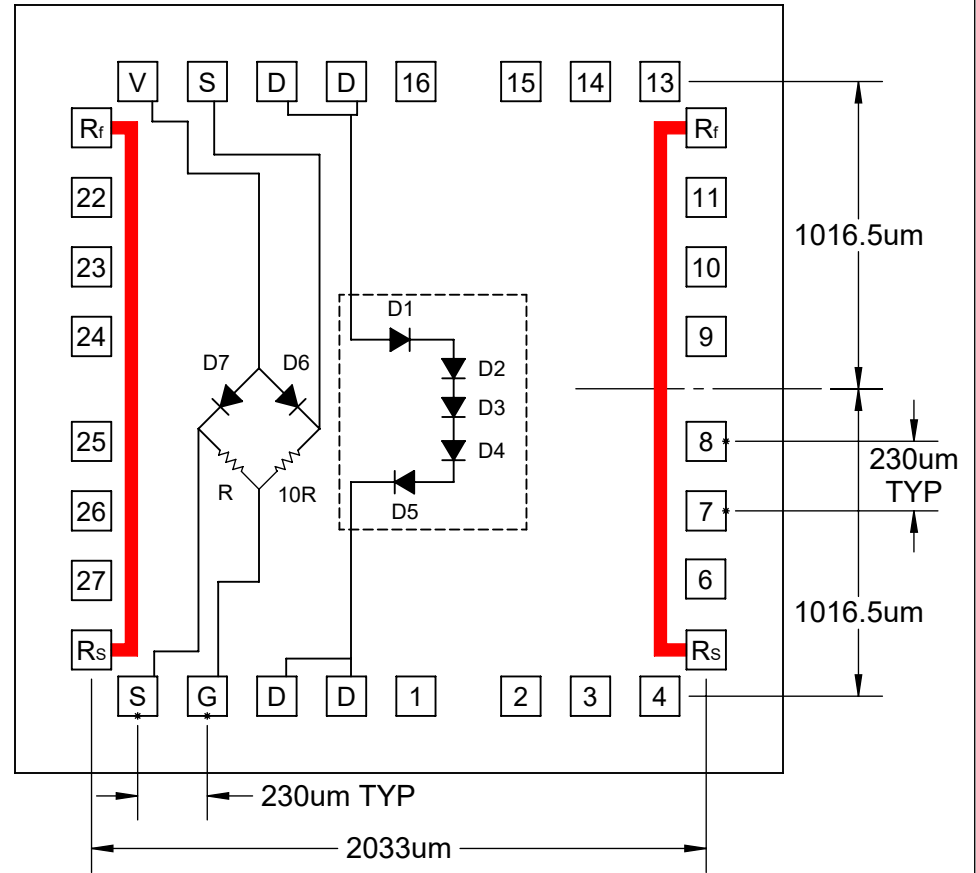
PART NUMBER	DIE SIZE	DIE PER WAFER	BOND PAD	DETAIL
PST1-B2.5A	2.5mm	1600	122 $\mu\text{m}$ SQ	1
PST1-G2.5A	2.5mm	1600	$\phi$ 102 $\mu\text{m}$	2

APPROVALS	DATE				
DRAWN T. Au	7/16/2018				
ENG M. Hart	7/16/2018	TITLE PST1 THERMAL DIE 2.5mm x 2.5mm			
MFG		SCALE 40:1	SIZE A	DRAWING NO. 110021	REV A
QA					
CUST					
REVISED		DO NOT SCALE DRAWING			SHEET 1 OF 4

**BACK SIDE**



**PAD SIDE**



REFERENCE:  
 Rf~Rs = HEATER Si RESISTIVE  
 D = DIODE  
 V = +VOLTAGE  
 G = GROUND  
 S = TEMPERATURE SENSE

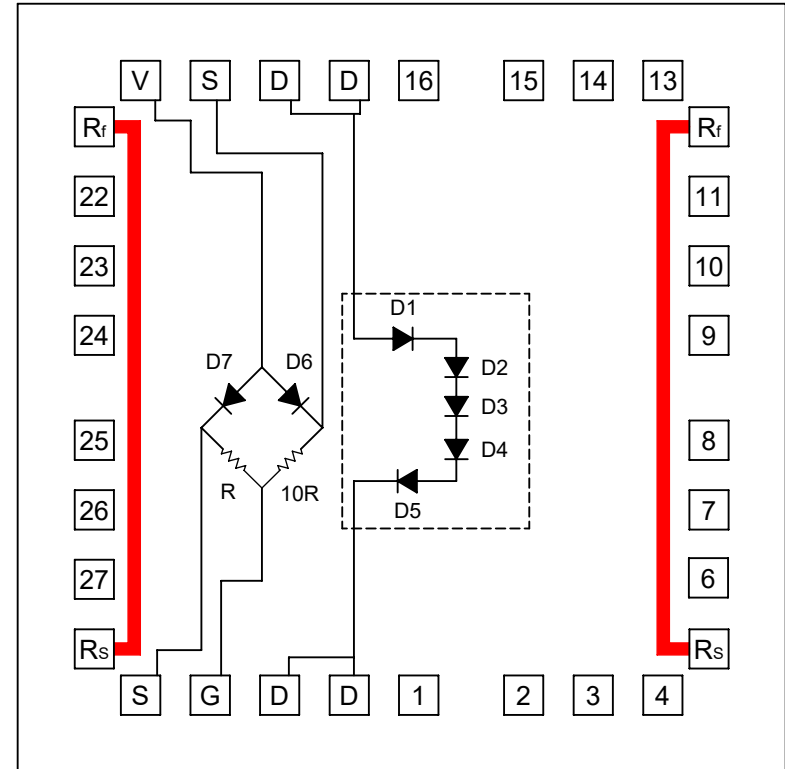
<b>TopLine®</b>			
TITLE		PST1 THERMAL DIE 2.5mm x 2.5mm	
SCALE	SIZE	DRAWING NO.	REV
40:1	A	110021	A
DO NOT SCALE DRAWING			SHEET 2 OF 4

## NET LIST

(0,0) is located at the center of the die

MICRON um			
PIN#	FUNCTION	X	Y
1	NC	56.5	-1016.5
2	NC	403.5	-1016.5
3	NC	633.5	-1016.5
4	NC	863.5	-1016.5
5	Rs (1)	1016.5	-863.5
6	NC	1014.5	-628.5
7	NC	1016.5	-403.5
8	NC	1016.5	-173.5
9	NC	1016.5	173.5
10	NC	1016.5	403.5
11	NC	1016.5	633.5
12	Rf (1)	1016.5	863.5
13	NC	863.5	1016.5
14	NC	633.5	1016.5
15	NC	403.5	1016.5
16	NC	56.5	1016.5
17	D (1)	-173.5	1016.5
18	D (2)	-403.5	1016.5
19	S (1)	-633.5	1016.5
20	V	-863.5	1016.5
21	Rf (2)	-1016.5	863.5
22	NC	-1016.5	633.5
23	NC	-1016.5	403.5
24	NC	-1016.5	173.5
25	NC	-1016.5	-173.5
26	NC	-1016.5	-403.5
27	NC	-1016.5	-633.5
28	Rs (2)	-1016.5	-863.5
29	S (2)	-863.5	-1016.5
30	G	-633.5	-1016.5
31	D (3)	-403.5	-1016.5
32	D (4)	-173.5	-1016.5

NC = NO CONNECTION



**REFERENCE:**

Rf-Rs = HEATER Si RESISTIVE ELEMENTS

D = DIODE

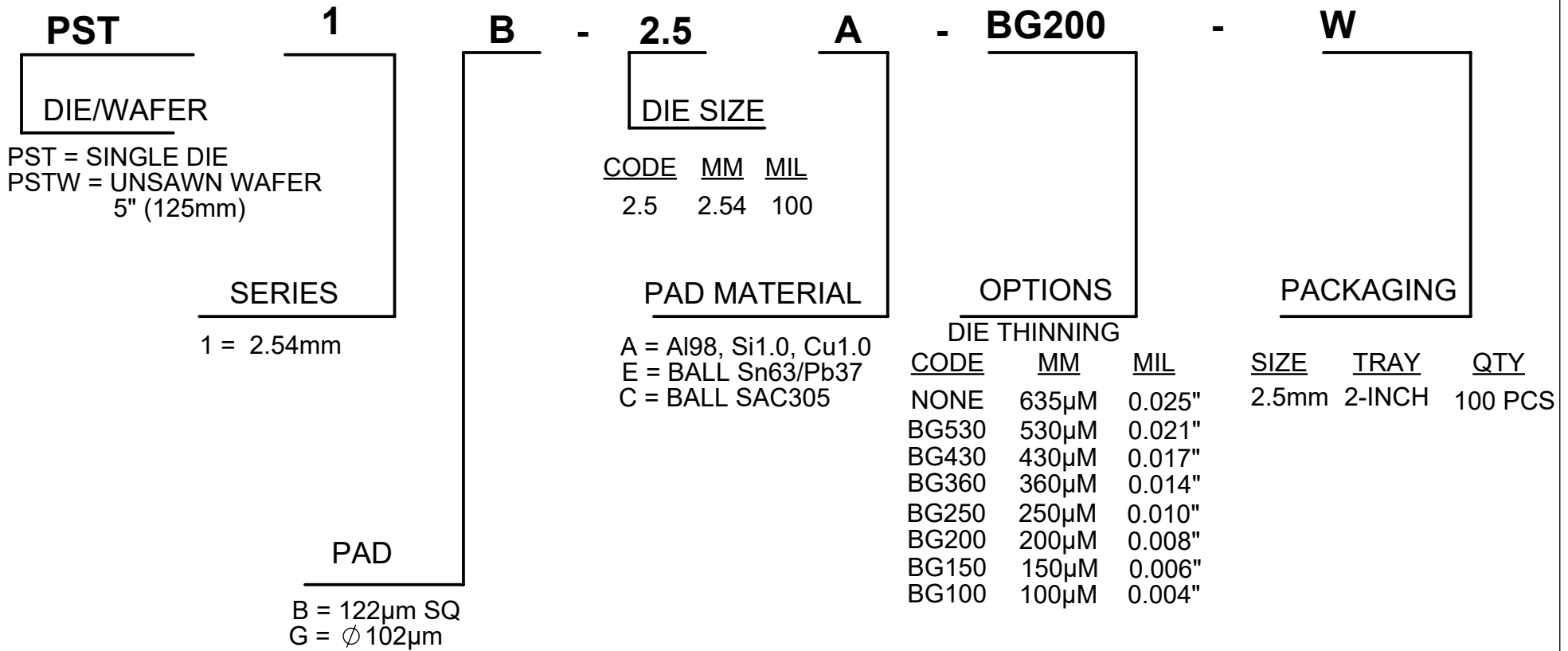
V = +VOLTAGE

G = GROUND

S = TEMPERATURE SENSE

<b>TopLine®</b>			
TITLE    PST1 THERMAL DIE 2.5mm x 2.5mm			
SCALE	SIZE	DRAWING NO.	REV
40:1	A	110021	A
DO NOT SCALE DRAWING			SHEET 3 OF 4

# PART NUMBERING SYSTEM



<b>TopLine®</b>			
TITLE      PST1 THERMAL DIE 2.5mm x 2.5mm			
SCALE NONE	SIZE A	DRAWING NO. 110021	REV A
DO NOT SCALE DRAWING			SHEET 4 OF 4