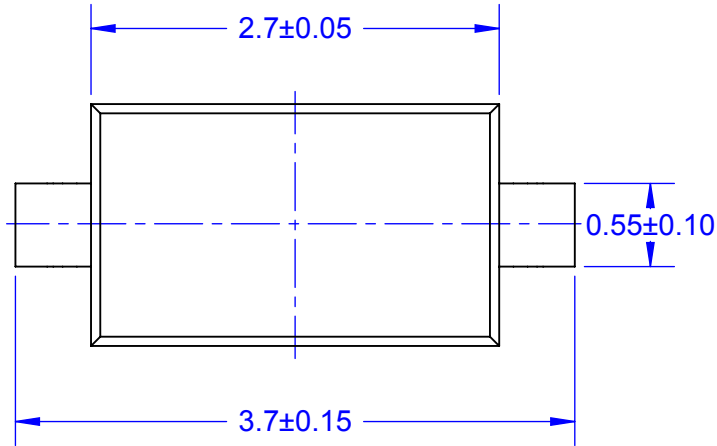
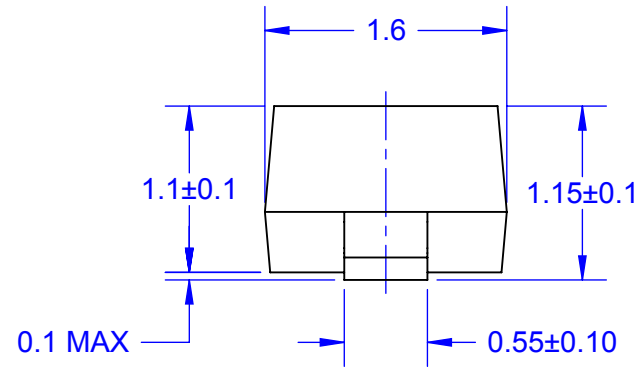


SOD123G OUTLINE GULL WING LEADS

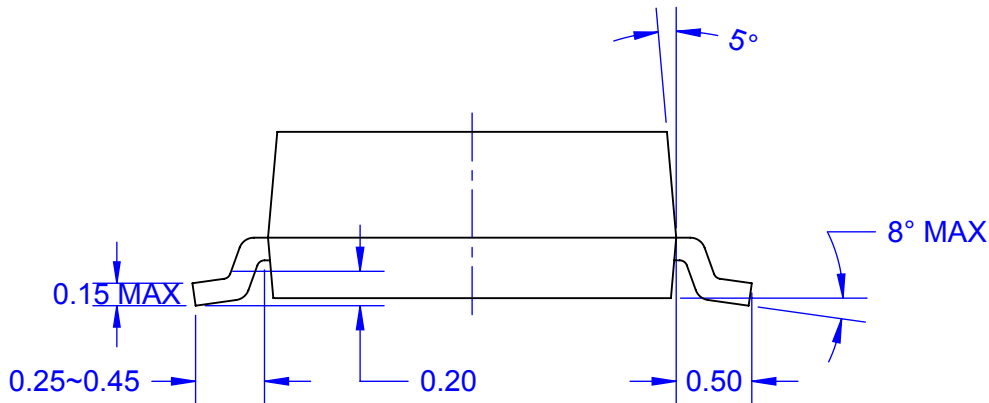
TOP VIEW



END VIEW

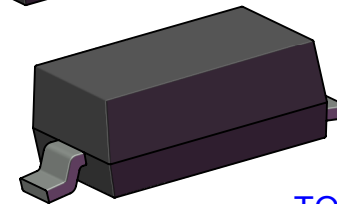
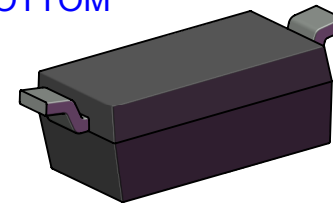


SIDE VIEW



MODEL

BOTTOM



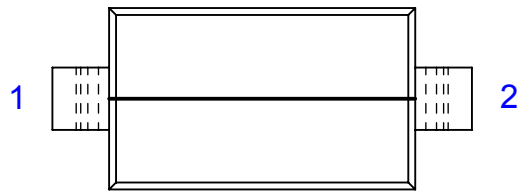
TOP

Notes: (Unless Otherwise Specified).

- 1) DIMENSIONS IN mm.
- 2) SEE JUMPER AND SPACER DIAGRAMS (PAGE 12).
- 3) SEE PART NUMBER CONFIGURATION (PAGE 13).
- 4) RECOMMENDED PC BOARD LAYOUT PATTERN (PAGE 14).
- 5) MOUNTING POSITION: ANY (NON-POLARIZED).
- 6) TAPE AND REEL (PAGE 15).

APPROVALS		DATE	TopLine®			
DRAWN	T.Au	08/13/14				
ENG	M. Hart	08/13/14	TITLE			
MFG			SOD123G JUMPER AND SPACER			
QA			SCALE	SIZE	DRAWING NO.	REV
CUST			20:1	A	130123	A
REVISED			DO NOT SCALE DRAWING			SHEET 1 OF 7

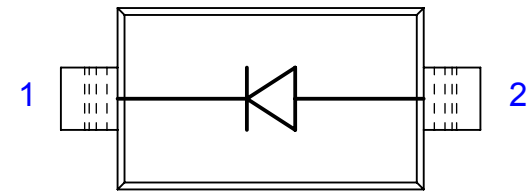
INTERNAL WIRING CIRCUIT
PART NUMBER SUFFIX
TOP VIEW



DC-12
1-WIRE
CIRCUIT JUMPER

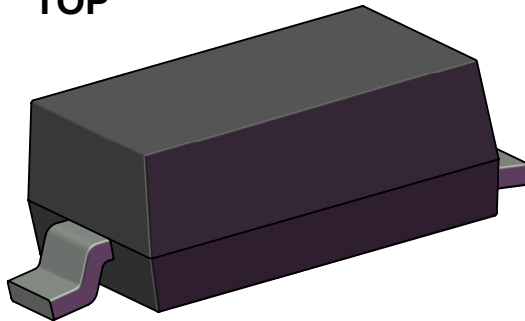


ISO
NO CONNECTION
FULLY ISOLATED
NON-CONDUCTIVE SPACER

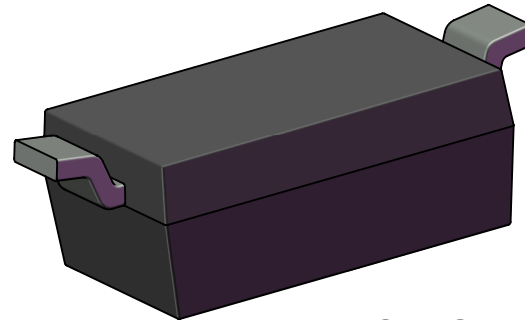


BLANK SUFFIX
UNDEFINED CIRCUIT
DUMMY

TOP



MODEL



BOTTOM

TopLine®

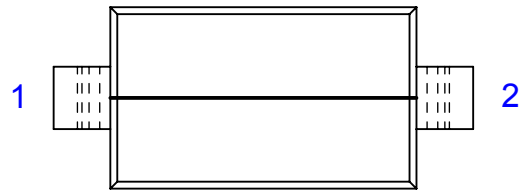
TITLE SOD123G
 JUMPER AND SPACER

SCALE 20:1	SIZE A	DRAWING NO. 130123	REV A
---------------	-----------	-----------------------	----------

DO NOT SCALE DRAWING

SHEET 2 OF 7

SCHEMATIC EQUIVALENT INTERNAL CIRCUIT



DC12
(SHORT CIRCUIT)



ELECTRICAL RESISTANCE MILLIOHM (DC) MAX	
CIRCUIT	PIN 1 TO PIN 2
DC12	50 milli Ω

SCHEMATIC EQUIVALENT INTERNAL CIRCUIT



ISOLATED CIRCUIT
NO CONNECTIONS



INSULATION RESISTANCE GIGA OHM (DC) MIN	
CIRCUIT	PIN 1 TO PIN 2
ISO	> 10 G Ω

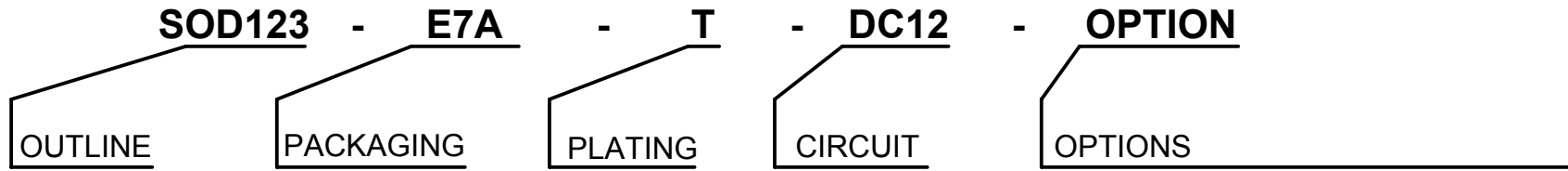
THERMAL RESISTANCE	PART TYPE
	SOD123G
JUNCTION TO AMBIENT ($T_a=25^\circ$) $R_{th(j-a)}$	50 $^\circ\text{C}/\text{W}$

MAXIMUM ELECTRICAL (DC) RATING	PART TYPE
	SOD123G
V_R WORKING VOLTAGE	100V
V_F FORWARD @ RATED CURRENT	< 0.2V
I_o FORWARD CURRENT	0.25 A
I_{FSM} FORWARD SURGE CURRENT	4.0 A
I_R REVERSE CURRENT	0.25 A
C_j JUNCTION CAPACITANCE	4 pF

TEMPERATURE RATING	
JUNCTION TEMP T_j	150 $^\circ\text{C}$
STORAGE TEMP T_{stg}	-65 $^\circ\text{C}$ TO 150 $^\circ\text{C}$
PEAK REFLOW TEMP T_{reflow} 10 SECONDS	260 $^\circ\text{C}$

TopLine[®]			
TITLE		SOD123G JUMPER AND SPACER	
SCALE	SIZE	DRAWING NO.	REV
15:1	A	130123	A
DO NOT SCALE DRAWING			SHEET 3 OF 7

PART NUMBERING SYSTEM



E4A 4-INCH REEL
E7A 7-INCH REEL

T =
Pb-FREE
RoHS
LEAD FREE

Sn100
MATTE TIN
5µm THICK

DAISY CHAIN
JUMPER

DC12 = PIN 1-2

ISO = ISOLATED CIRCUIT
NO CONNECTIONS

BLANK = DUMMY
UNDEFINED

BLANK - COMMERCIAL GRADE (STANDARD)

D = DUMMY DIE (0.65mm SQ)

ALLOY 42 LEAD FRAME

OUTLINE	REEL QTY	NOTES	RoHS	MSL LEVEL	HALOGEN FREE	APPLICATION	TOP MARK
SOD123-DC12	3000	SHORT CIRCUIT	YES	1	YES	JUMPER	12
SOD123-ISO	3000	OPEN CIRCUIT	YES	1	YES	SPACER	NC
SOD123	3000	UNDEFINED	YES	1	YES	DUMMY	-

TopLine®

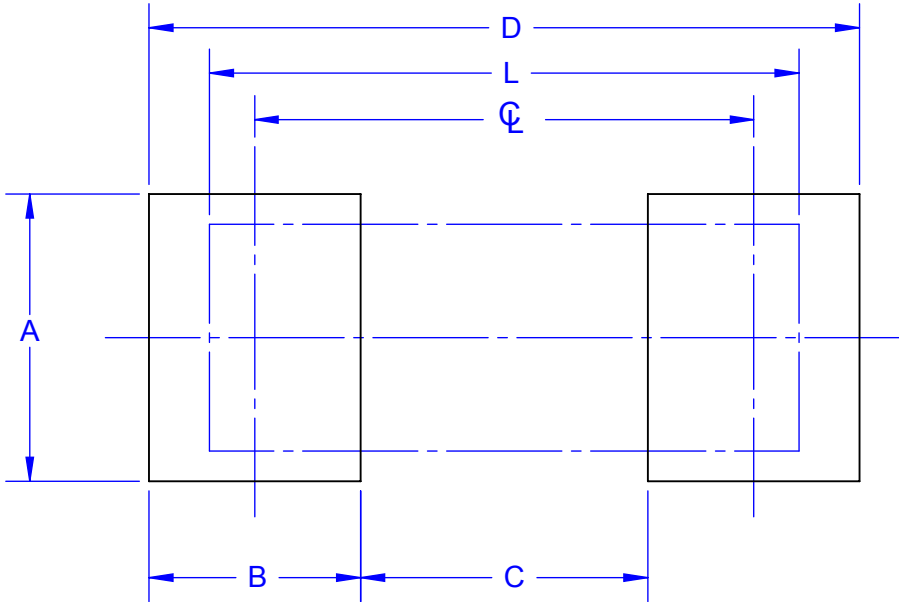
TITLE
SOD123G
JUMPER AND SPACER

SCALE NONE	SIZE A	DRAWING NO. 130123	REV A
---------------	-----------	-----------------------	----------

DO NOT SCALE DRAWING

SHEET 4 OF 7

PC BOARD LAND PATTERN



ALL DIMENSIONS IN mm

PCB PAD DIMENSIONS	
SYMBOL	SOD123G
A	1.0
B	0.8
C	2.8
D	4.7
Φ	3.6
L	3.7

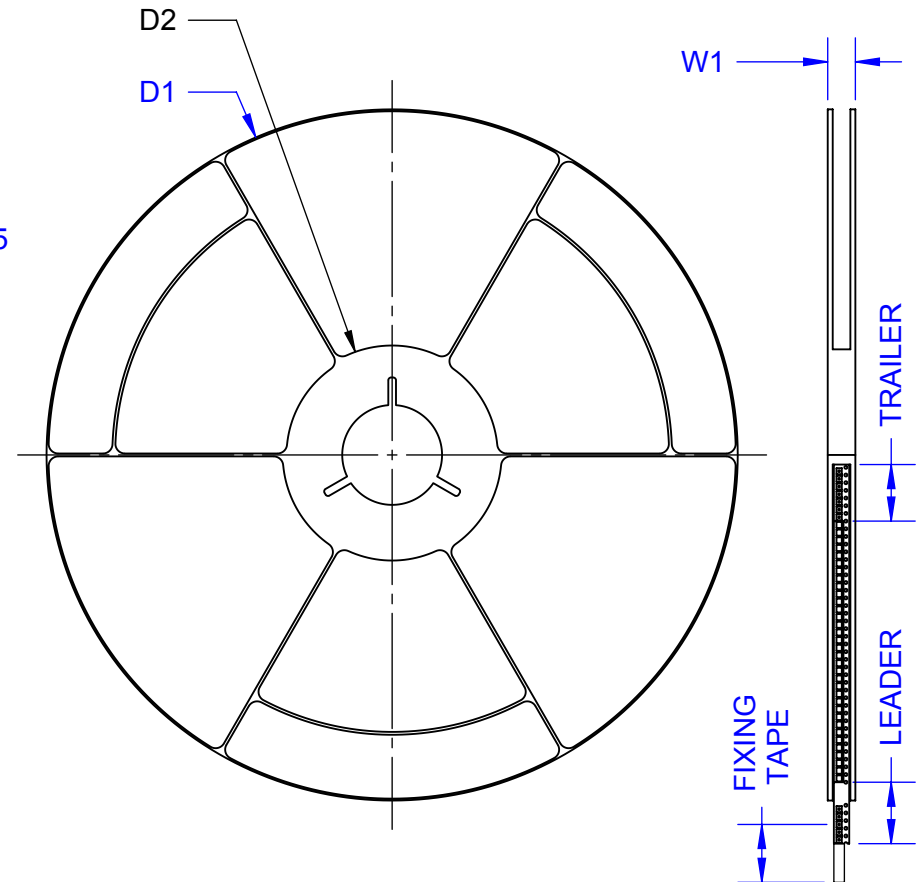
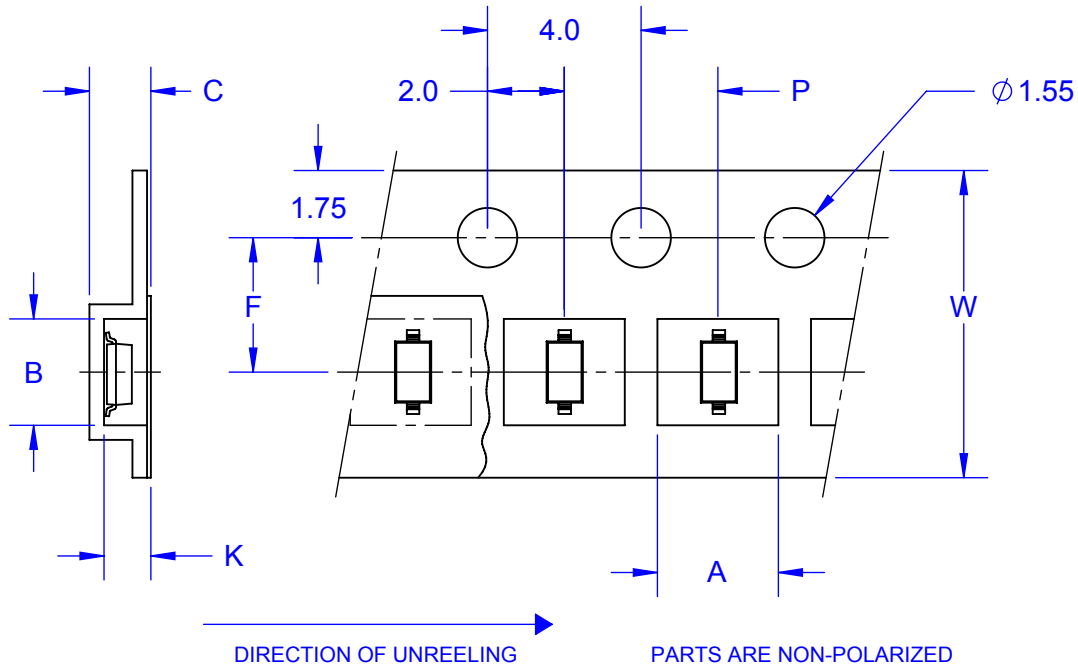
Notes: (Unless Otherwise Specified).

- 1) DIMENSIONS IN mm.
- 2) PCB BOARD DIMENSIONS ARE PRESENTED ONLY AS A GUIDELINE. DESIGNERS SHOULD USE THEIR OWN EXPERIENCE WHEN DESIGNING PCB.

TopLine®			
TITLE		SOD123G JUMPER AND SPACER	
SCALE	SIZE	DRAWING NO.	REV
20:1	A	130123	A
DO NOT SCALE DRAWING			SHEET 5 OF 7

TAPE SPECIFICATION SURFACE MOUNT DEVICE

7 INCH PACKAGE REEL

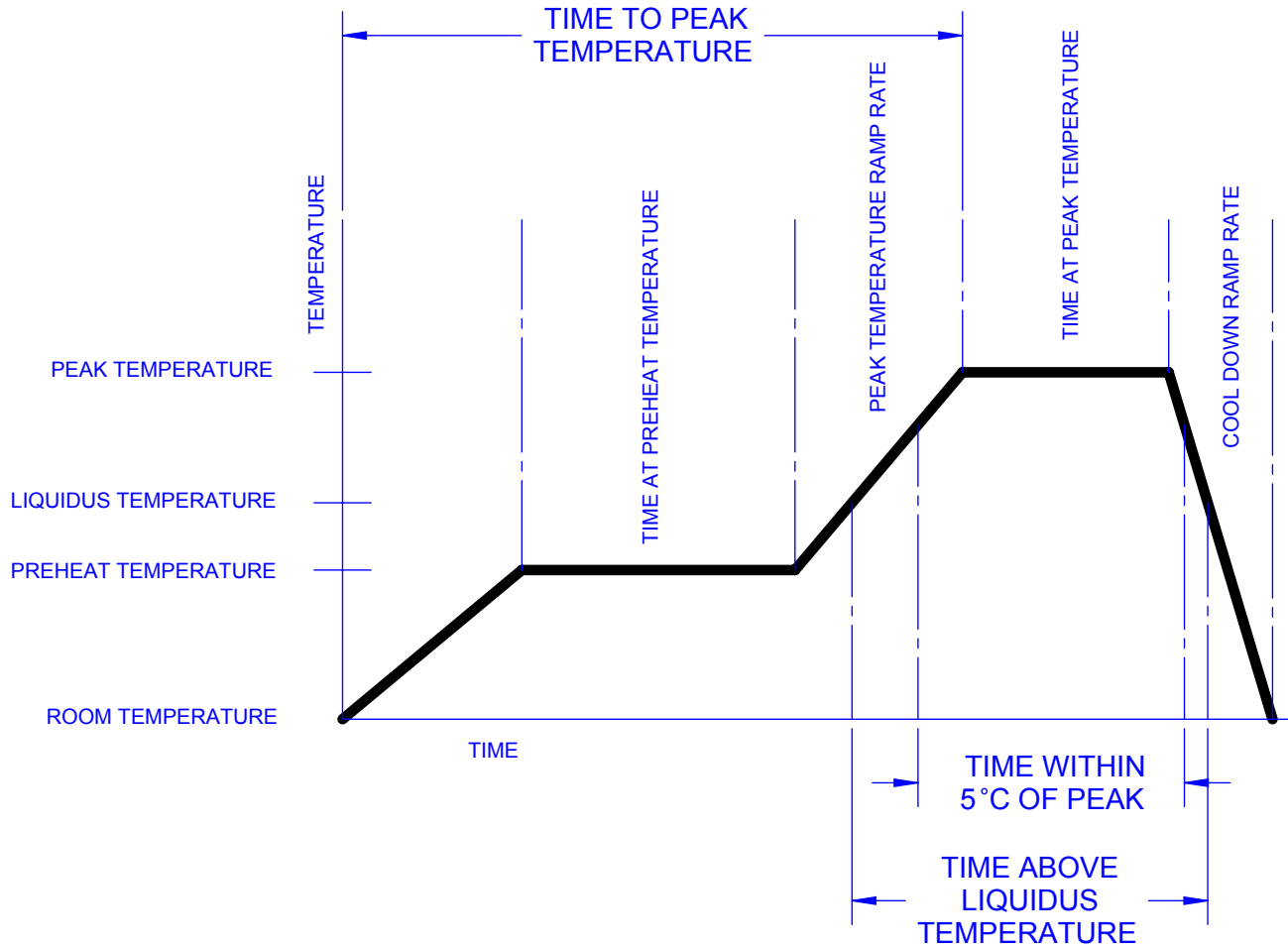


ALL DIMENSIONS IN mm.

TAPE AND REEL DIMENSIONS		E7A 7-INCH
	SYMBOL	SOD123G
TAPE WIDTH	W	8
PITCH OF COMPONENTS	P	4
POCKET WIDTH	A	1.85
POCKET LENGTH	B	3.94
POCKET DEPTH	K	1.57
CARRIER THICKNESS	C	1.8
REEL DIAMETER	D1	178
HUB DIAMETER	D2	50
PUNCH HOLE POSITION	F	3.5
MAX REEL WIDTH	W1	11.4
QUANTITY (PSC)	-	3000

TopLine®			
TITLE SOD123G JUMPER AND SPACER			
SCALE 3:1	SIZE A	DRAWING NO. 130123	REV A
DO NOT SCALE DRAWING			SHEET 6 OF 7

LEAD FREE REFLOW PROFILE OF SMD PACKAGE



DESCRIPTION	REQUIREMENT
AVERAGE PREHEAT RAMP RATE	3°C /SECOND MAXIMUM
PREHEAT TEMPERATURE	150°C MINIMUM, 200°C MAXIMUM
PREHEAT TIME	60 TO 120 SECONDS
RAMP TO PEAK	3°C /SECOND MAXIMUM
TIME OVER LIQUIDUS (217°C)	60 TO 260 SECONDS
PEAK TEMPERATURE	260°C +0/-5°C
TIME WITHING 5°C OF PEAK	10 TO 30 SECONDS
RAMP - COOL DOWN	6°C /SECONDS MAXIMUM
TIME 25°C TO PEAK	6 MINUTES MAXIMUM

TopLine®

TITLE SOD123G
 JUMPER AND SPACER

SCALE NONE	SIZE A	DRAWING NO. 130123	REV A
---------------	-----------	-----------------------	----------

DO NOT SCALE DRAWING SHEET 7 OF 7