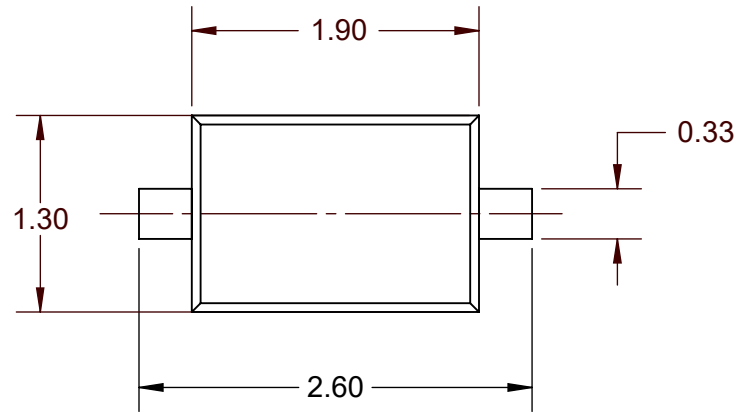
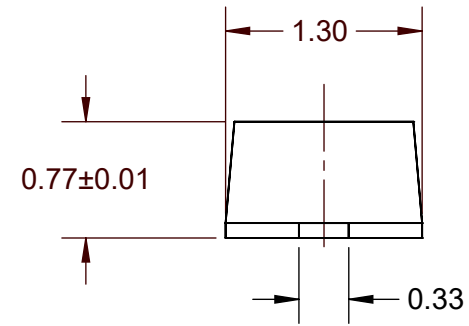


# SOD323FS OUTLINE FLAT NARROW LEADS

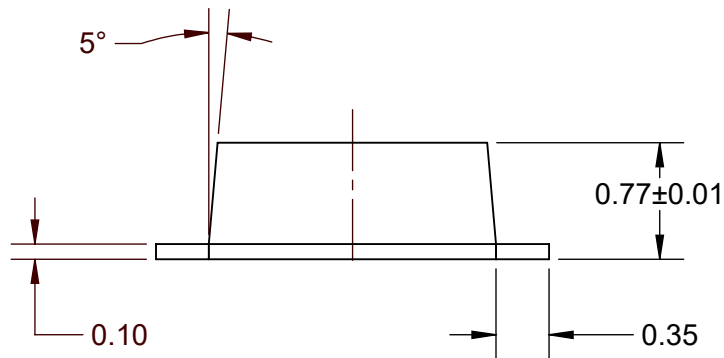
**TOP VIEW**



**END VIEW**

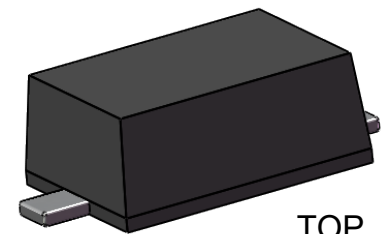
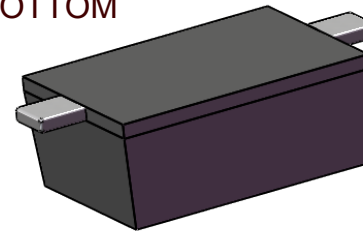


**SIDE VIEW**



**MODEL**

**BOTTOM**



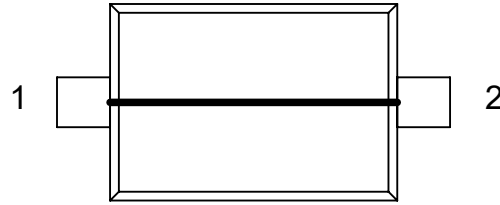
**TOP**

Notes: (Unless Otherwise Specified).

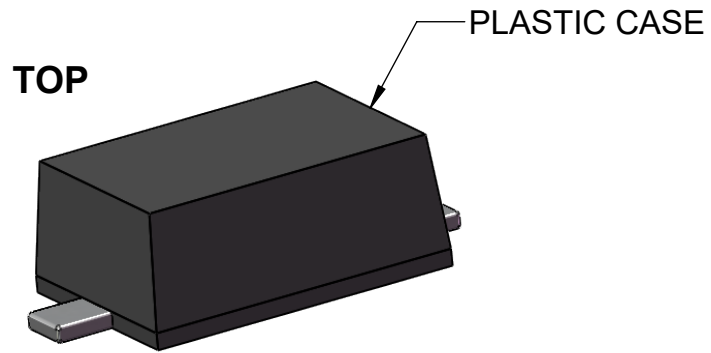
- 1) DIMENSIONS IN mm.
- 2) SEE JUMPER AND SPACER DIAGRAMS (Page 3).
- 3) SEE PART NUMBER CONFIGURATION (Page 4).
- 4) RECOMMENDED PC BOARD LAYOUT PATTERN (Page 5).
- 5) MOUNTING POSITION: ANY (NON-POLARIZED).
- 6) TAPE AND REEL (PAGE 6).

APPROVALS	DATE	<b>TopLine®</b>			
DRAWN T. Au	7/28/2018				
ENG M. Hart	7/28/2018	TITLE SOD323FS ZERO OHM JUMPER			
MFG		SCALE 20:1	SIZE A	DRAWING NO. 130322	REV A
QA					
CUST		DO NOT SCALE DRAWING			SHEET 1 OF 7
REVISED					

**INTERNAL WIRING CIRCUIT**  
PART NUMBER SUFFIX  
TOP VIEW

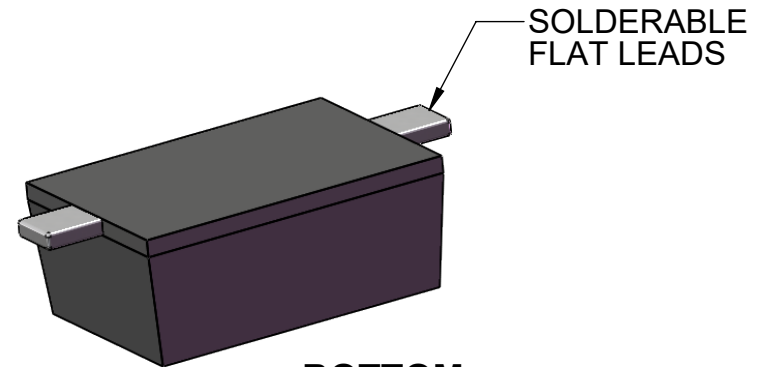


**DC12**  
ZERO OHM JUMPER



**TOP**

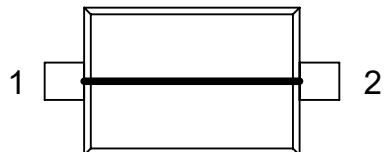
**MODEL**



**BOTTOM**

<b>TopLine®</b>			
TITLE SOD323FS ZERO OHM JUMPER			
SCALE 20:1	SIZE A	DRAWING NO. 130322	REV A
DO NOT SCALE DRAWING			SHEET 2 OF 7

**SCHEMATIC EQUIVALENT INTERNAL CIRCUIT**



**SHORT CIRCUIT JUMPER**



$R_{LF}$  (LEAD FRAME)

RESISTANCE TABLE	
CIRCUIT	PIN 1 TO PIN 2
DC12	50 milli $\Omega$

THERMAL RESISTANCE	PART TYPE
	SOD323FS
JUNCTION TO AMBIENT ( $T_a=25^\circ$ ) $R_{th(j-a)}$	50 $^\circ\text{C}/\text{W}$

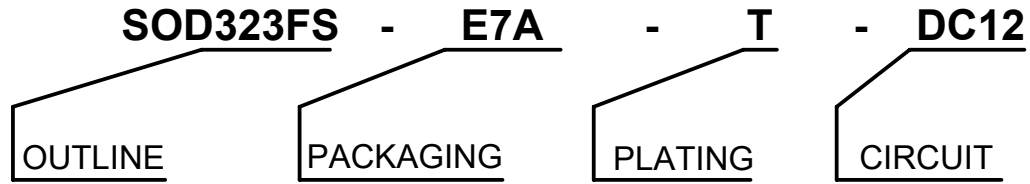
TEMPERATURE RATING	
JUNCTION TEMP $T_j$	150 $^\circ\text{C}$
STORAGE TEMP $T_{stg}$	-65 $^\circ\text{C}$ TO 150 $^\circ\text{C}$
PEAK REFLOW TEMP $T_{reflow}$ 10 SECONDS	260 $^\circ\text{C}$

MAXIMUM ELECTRICAL (DC) RATING	PART TYPE
	SOD323FS
$V_R$ WORKING VOLTAGE	100V
$V_F$ FORWARD @ RATED CURRENT	< 0.2V
$I_o$ FORWARD CURRENT	1.0A
$I_{FSM}$ FORWARD SURGE CURRENT	15A
$I_R$ REVERSE CURRENT	1.0A
$C_J$ JUNCTION CAPACITANCE	9pF



TITLE			
SOD323FS ZERO OHM JUMPER			
SCALE	SIZE	DRAWING NO.	REV
15:1	A	130322	A
DO NOT SCALE DRAWING			SHEET 3 OF 7

# PART NUMBERING SYSTEM



E7A = 7-INCH REEL  
E4A = 4-INCH REEL

T =  
Pb-FREE  
RoHS  
LEAD FREE

Sn100  
MATTE TIN  
5μm THICK

JUMPER  
DC12 = PIN 1-2  
CONNECTED

PART NUMBER	REEL QTY	NOTES	RoHS	MSL LEVEL	HALOGEN FREE	APPLICATION	TOP MARK
SOD323FS-E7A-T-DC12	3000	SHORT CIRCUIT	YES	1	YES	JUMPER	S
SOD323FS-E4A-T-DC12	500	SHORT CIRCUIT	YES	1	YES	JUMPER	S

**TopLine®**

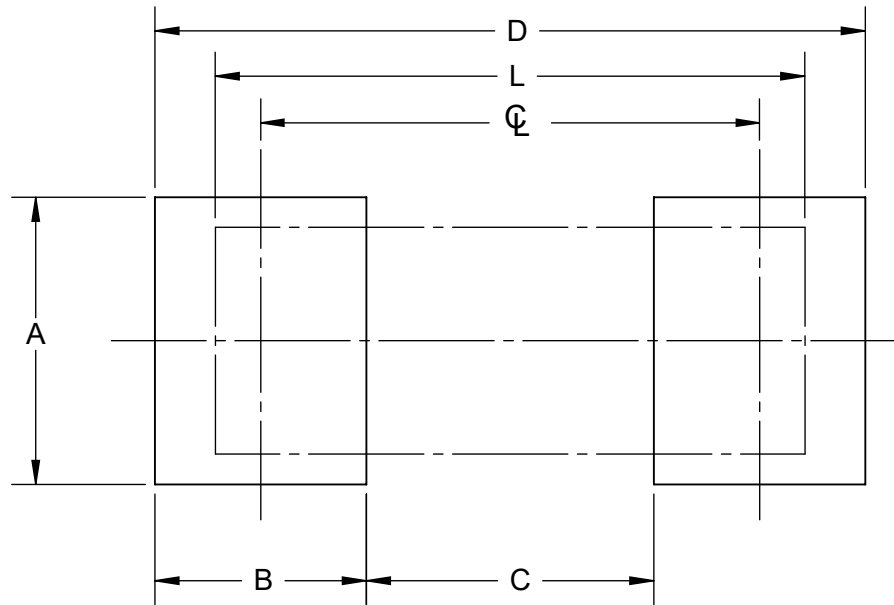
TITLE  
SOD323FS  
ZERO OHM JUMPER

SCALE NONE	SIZE A	DRAWING NO. 130322	REV A
---------------	-----------	-----------------------	----------

DO NOT SCALE DRAWING

SHEET 4 OF 7

## PC BOARD LAND PATTERN



ALL DIMENSIONS IN mm

PCB PAD DIMENSIONS	
SYMBOL	SOD323FS
A	1.3
B	0.9
C	0.8 ~ 1.2
D	2.6 ~ 3.5
Φ	1.7 ~ 2.1
L	2.6

Notes: (Unless Otherwise Specified).

1) DIMENSIONS IN mm.

2) PCB BOARD DIMENSIONS ARE PRESENTED ONLY AS A GUIDELINE.  
DESIGNERS SHOULD USE THEIR OWN EXPERIENCE WHEN DESIGNING PCB.

**TopLine®**

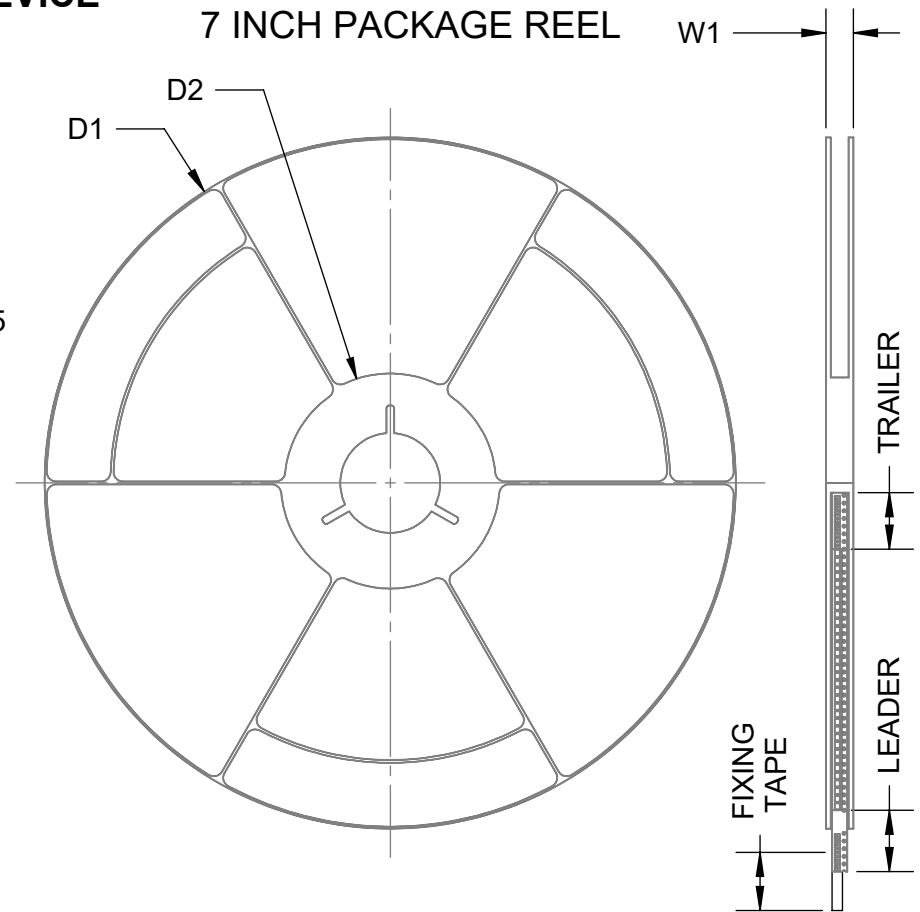
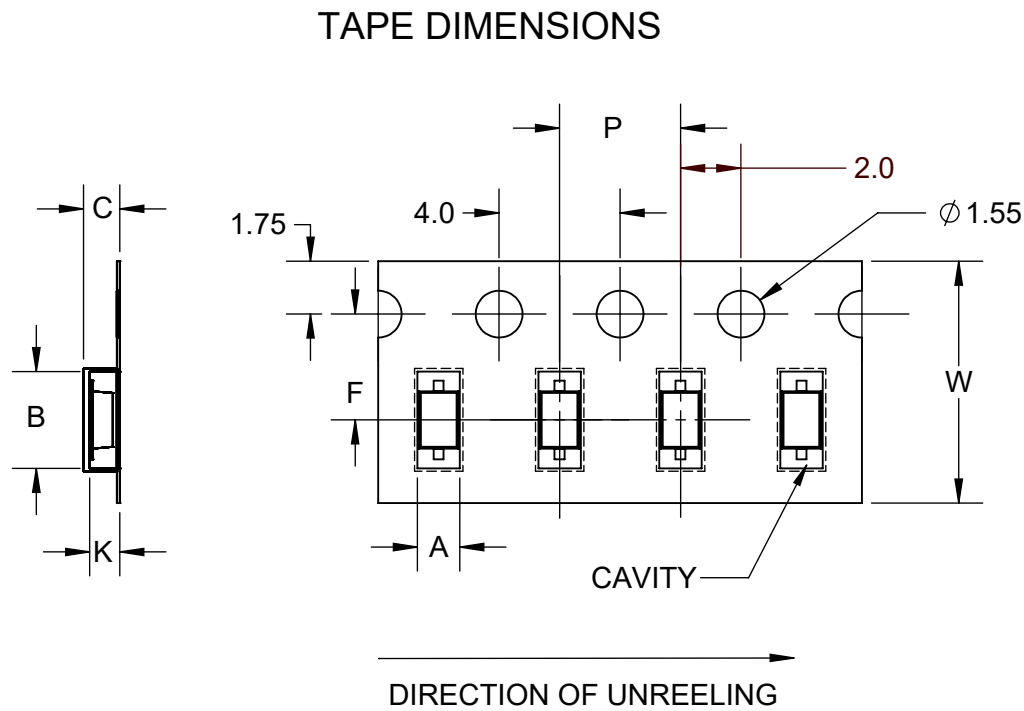
TITLE                      SOD323FS  
ZERO OHM JUMPER

SCALE 20:1	SIZE A	DRAWING NO. 130322	REV A
---------------	-----------	-----------------------	----------

DO NOT SCALE DRAWING

SHEET 5 OF 7

# TAPE SPECIFICATION SURFACE MOUNT DEVICE

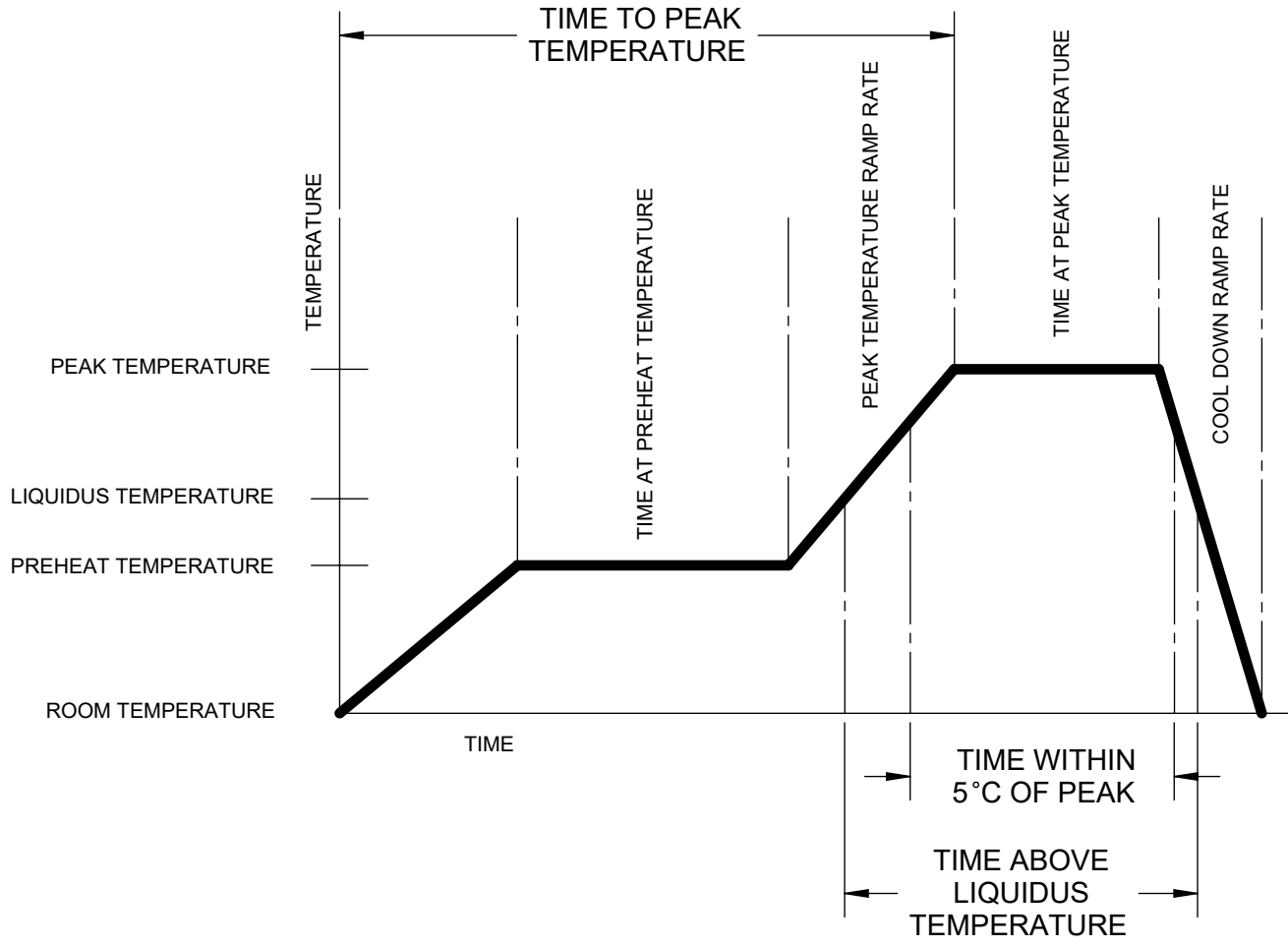


TAPE AND REEL DIMENSIONS		E7A 7-INCH
	SYMBOL	SOD323FS
TAPE WIDTH	W	8
PITCH OF COMPONENTS	P	4
POCKET WIDTH	A	1.4
POCKET LENGTH	B	3.2
POCKET DEPTH	K	1.0
CARRIER THICKNESS	C	1.2
REEL DIAMETER	D1	178
HUB DIAMETER	D2	50
PUNCH HOLE POSITION	F	3.5
MAX REEL WIDTH	W1	11.4
QUANTITY (PSC)		3000

ALL DIMENSIONS IN mm.

<b>TopLine®</b>			
TITLE SOD323FS ZERO OHM JUMPER			
SCALE 2:1	SIZE A	DRAWING NO. 130322	REV A
DO NOT SCALE DRAWING			SHEET 6 OF 7

# LEAD FREE REFLOW PROFILE OF SMD PACKAGE



DESCRIPTION	REQUIREMENT
AVERAGE PREHEAT RAMP RATE	3°C /SECOND MAXIMUM
PREHEAT TEMPERATURE	150°C MINIMUM, 200°C MAXIMUM
PREHEAT TIME	60 TO 120 SECONDS
RAMP TO PEAK	3°C /SECOND MAXIMUM
TIME OVER LIQUIDUS (217°C)	60 TO 260 SECONDS
PEAK TEMPERATURE	260°C +0/-5°C
TIME WITHING 5°C OF PEAK	10 TO 30 SECONDS
RAMP - COOL DOWN	6°C /SECONDS MAXIMUM
TIME 25°C TO PEAK	6 MINUTES MAXIMUM

**TopLine<sup>®</sup>**

TITLE                      SOD323FS  
ZERO OHM JUMPER

SCALE NONE	SIZE A	DRAWING NO. 130322	REV A
---------------	-----------	-----------------------	----------

DO NOT SCALE DRAWING                      SHEET 7 OF 7