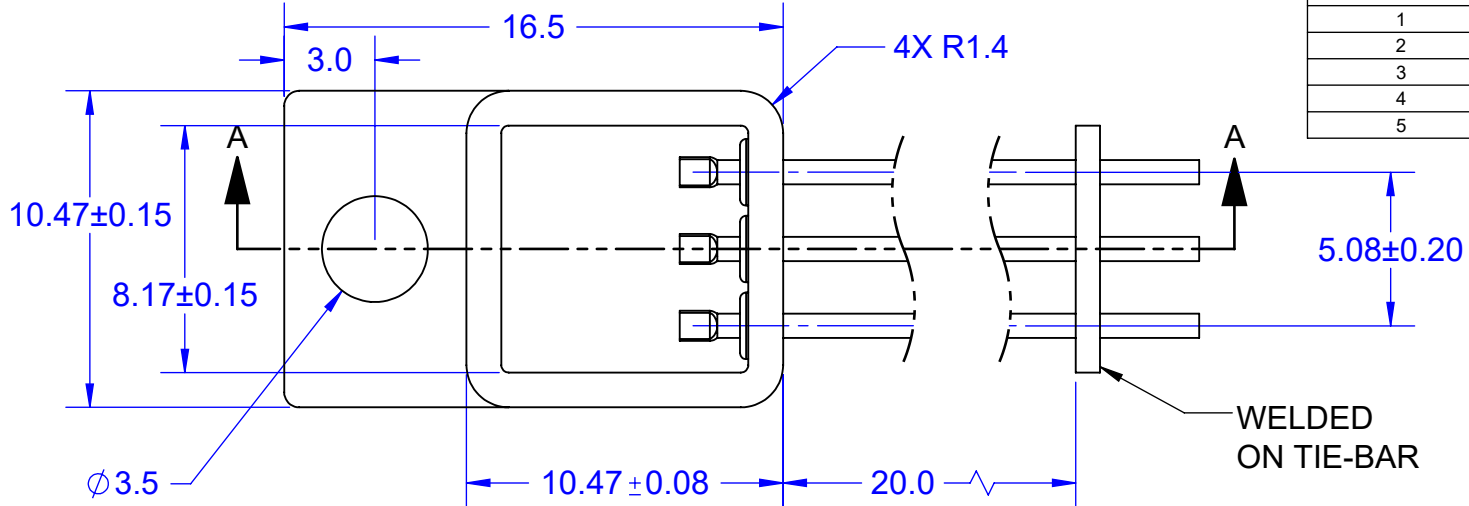
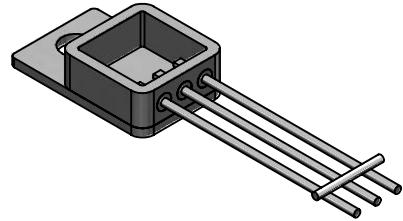


SECTION A-A

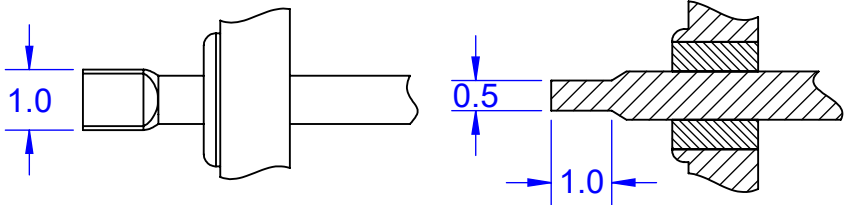
BILL OF MATERIAL		
DASH NUMBER	COMPONENT NAME	RAW MATERIAL
1	BASE	OFHC
2	FRAME	KOVAR
3	CERAMIC FEEDTHRU	ENHANCED AL203 95%
4	PIN	Cu CORED KOVAR
5	MATCHING LID	KOVAR/ALLOY 42



WELDED ON TIE-BAR



WIRE BOND FLAT DETAIL 3X



TOP VIEW

SIDE VIEW

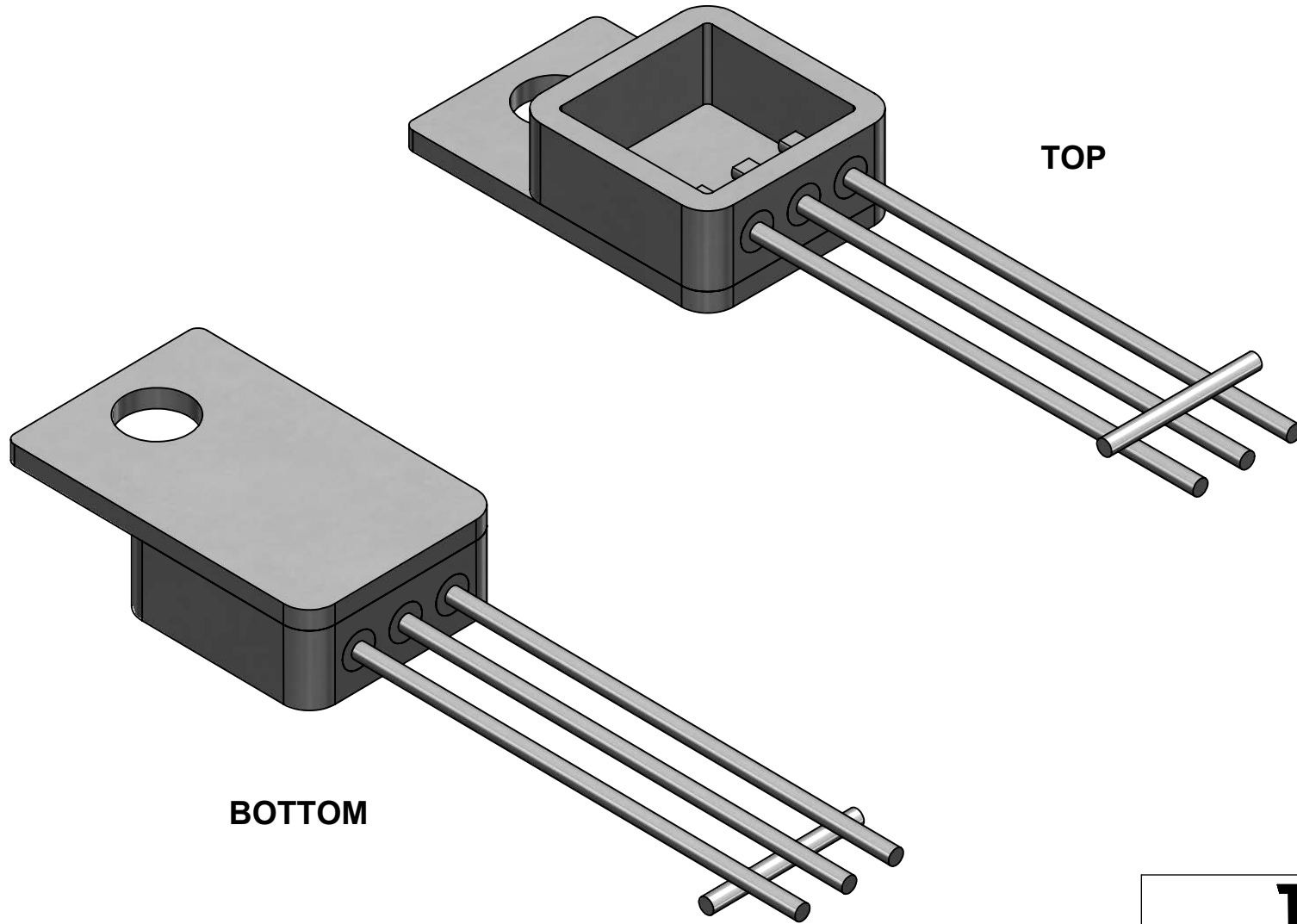
Notes: (Unless Otherwise Specified).

- 1) DIMENSIONS MM.
- 2) GENERAL SPECIFICATIONS ARE COMPLIED WITH MIL-STD-750E AND SCREENED PER MIL-PRF-38354.
- 3) MATERIAL: SEE BOM.
- 4) PLATING: 2.54 µm (100-MICRO INCH) NICKEL (Ni).
- 5) PART MUST EQUAL OR EXCEED 10e9 OHMS ISOLATION TEST WITH 500 V.D.C. PINS TO CASE.
- 6) BREAKDOWN VOLTAGE: PART MUST PASS 1000V BREAKDOWN VOLTAGE TEST WITH NORMAL TESTING CONDITIONS (INSULATED PINS AND CASE).

PART NUMBER TABLE			
PART NUMBER	BASE	LID	DWG
T0257-OFHC-N	OFHC	UNATTACHED	825725

APPROVALS		DATE				
DRAWN	T. Au	08/14/2022				
ENG	M. Hart	08/14/2022	TITLE T0257-OFHC-N NICKEL PLATED WITH TAB			
MFG			SCALE	SIZE	DRAWING NO.	REV
QA			4:1	A	825725	A
CUST			DO NOT SCALE DRAWING		SHEET 1 OF 2	
REVISED						

MODEL



TOP

BOTTOM

TopLine[®]			
TITLE TO257-OFHC-N NICKEL PLATED WITH TAB			
SCALE 4:1	SIZE A	DRAWING NO. 825725	REV A
DO NOT SCALE DRAWING			SHEET 2 OF 2