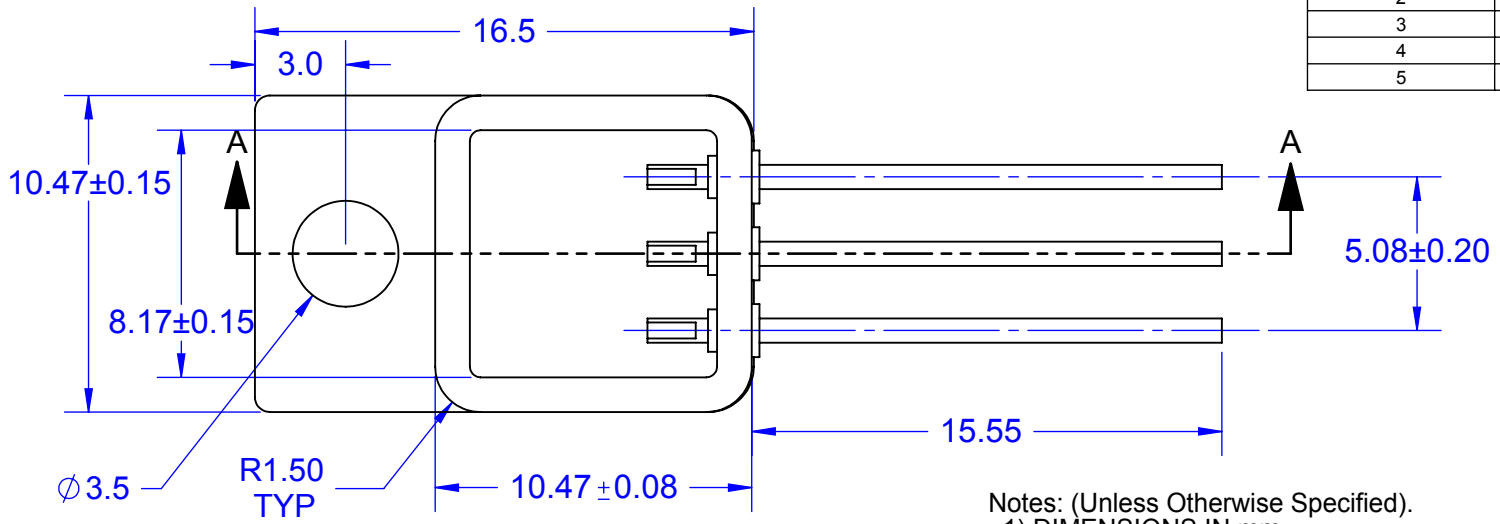



BILL OF MATERIAL		
DASH NUMBER	COMPONENT NAME	RAW MATERIAL
1	BASE	W85Cu15 OR OFHC
2	FRAME	KOVAR
3	CERAMIC FEEDTHRU	ENHANCED AL203 95%
4	PIN	Cu CORED KOVAR
5	MATCHING LID	KOVAR/ALLOY 42



- Notes: (Unless Otherwise Specified).
- 1) DIMENSIONS IN mm.
  - 2) GENERAL SPECIFICATIONS ARE COMPLIED WITH MIL-STD-750E AND SCREENED PER MIL-PRF-38354.
  - 3) MATERIAL: SEE BOM.
  - 4) FINAL FINISH: 1.27  $\mu$ m (50-MICRO INCH) GOLD (Au) OVER.  
2.54  $\mu$ m (100-MICRO INCH) NICKEL (Ni).
  - 5) PART MUST EQUAL OR EXCEED 10e9 OHMS ISOLATION TEST WITH 500 V.D.C. PINS TO CASE.
  - 6) BREAKDOWN VOLTAGE: PART MUST PASS 1000V BREAKDOWN VOLTAGE TEST WITH NORMAL TESTING CONDITIONS (INSULATED PINS AND CASE).

PART NUMBER TABLE			
PART NUMBER	BASE	LID	DWG
TO-257-CuW-G-N	W85Cu15	UNATTACHED	825710
TO-257-CuW-G	W85Cu15	ATTACHED	825711
TO-257-OFHC-G-N	OFHC Cu	UNATTACHED	825720
TO-257-OFHC-G	OFHC Cu	ATTACHED	825721

APPROVALS		DATE				
DRAWN	T. Au	02/23/13				
ENG	M. Hart	02/23/13	TITLE			
MFG			TO-257 PACKAGE WITH TAB			
QA			SCALE	SIZE	DRAWING NO.	REV
CUST			4:1	A	825710	A
REVISED			DO NOT SCALE DRAWING			SHEET 1 OF 1