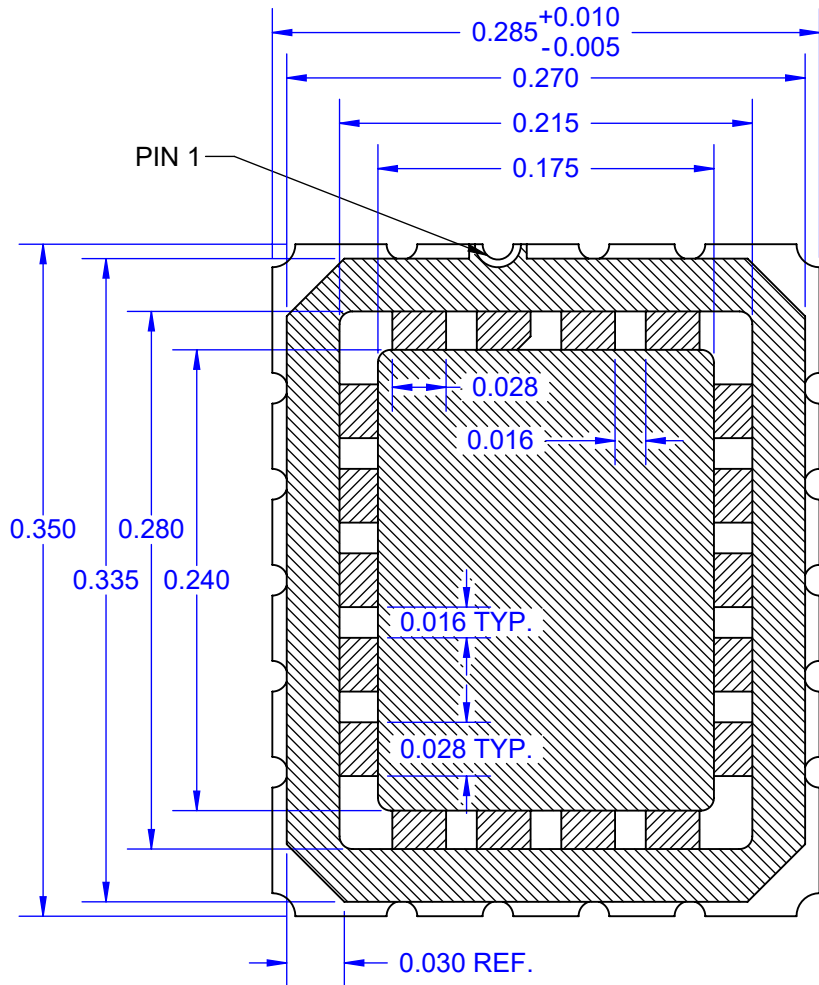
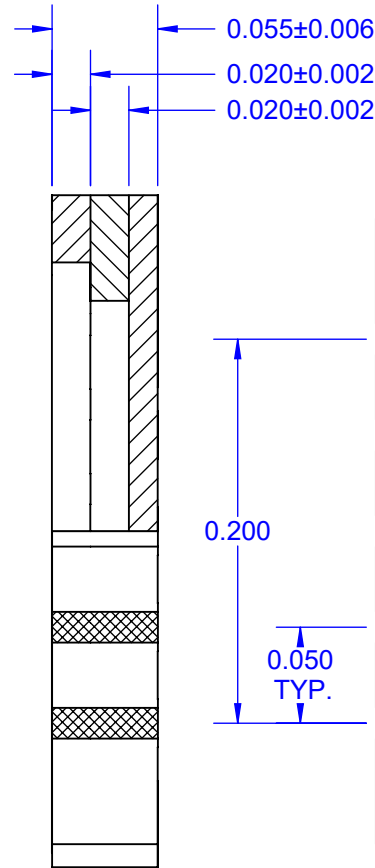


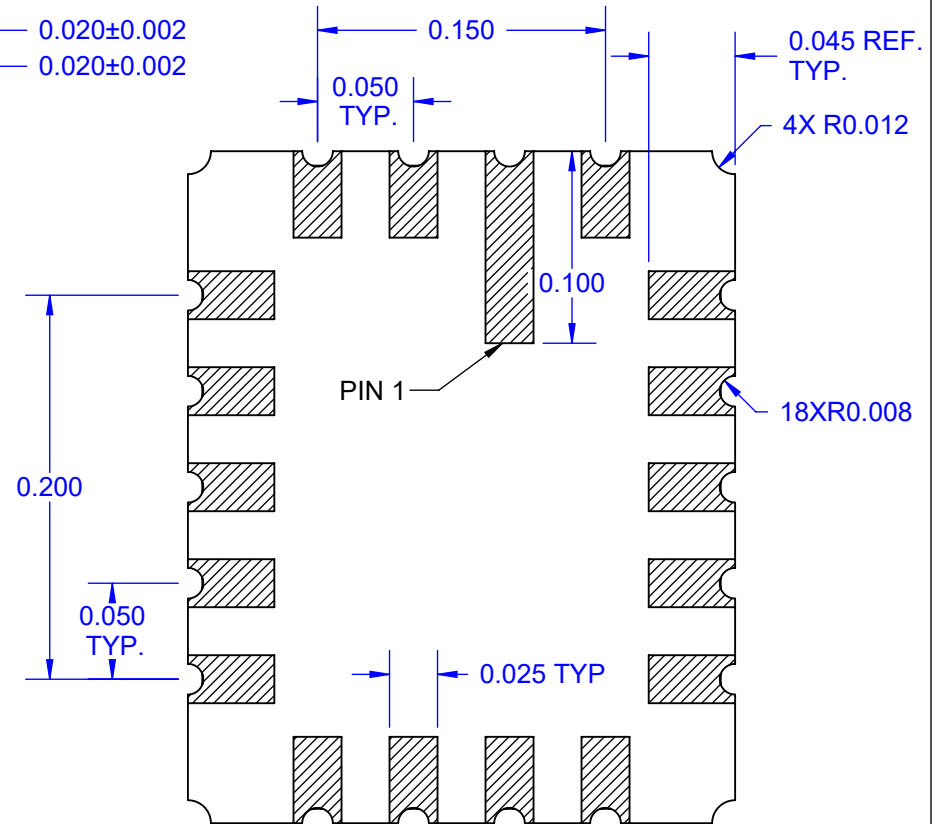
**TOP VIEW**



**SIDE VIEW**



**BOTTOM VIEW**



NOTES: (Unless Otherwise Specified).


1) PLATING:

Ni 80 MICRO-INCH (2.0µm) MIN.

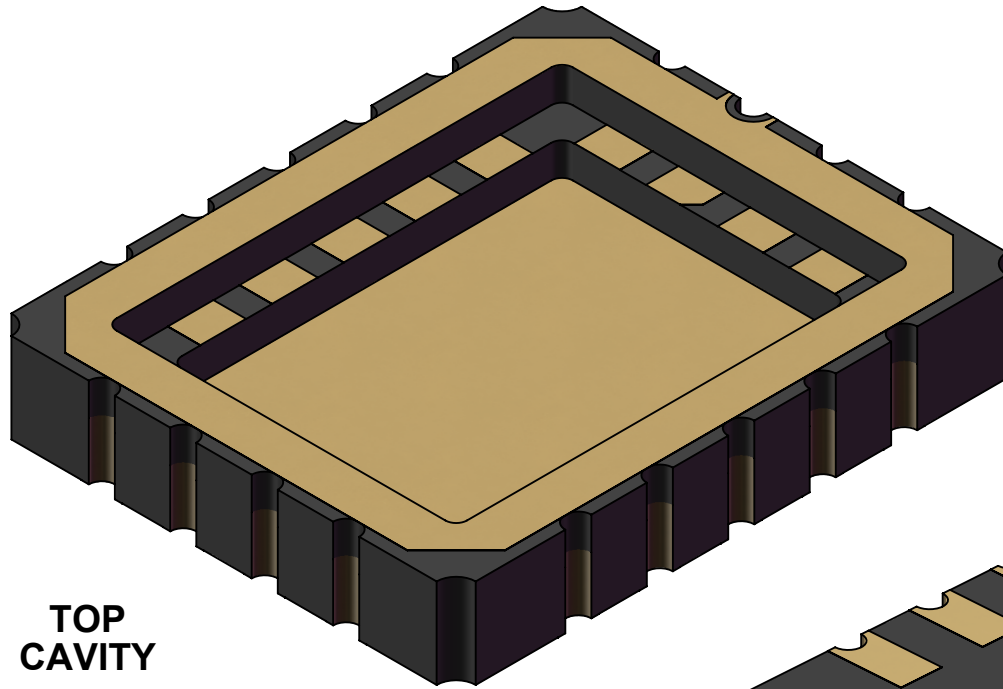
Au 60 MICRO-INCH (1.5µm) MIN.

2) DIMENSIONS in INCH (UNLESS SPECIFIED).

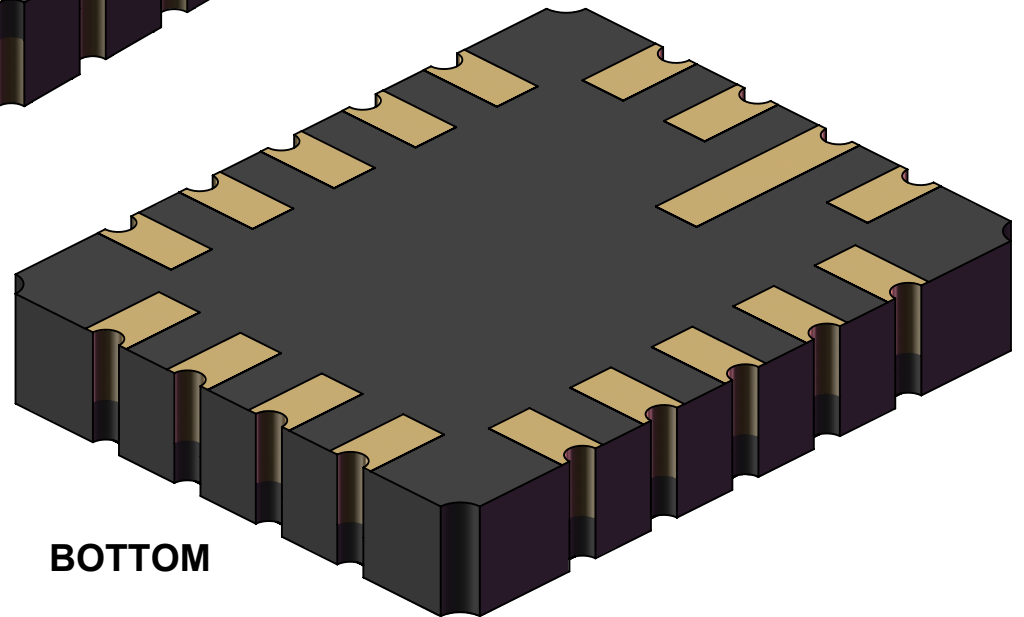
PART NUMBER	LID	PLATING	DAISY CHAIN
LCC18B50R.28x.35-N	OPEN	NiAu	NO

APPROVALS	DATE				
DRAWN T. Au	06/22/16				
ENG M. Hart	06/22/16	TITLE LCC18B50R.28x.35			
MFG		SCALE 10:1	SIZE A	DRAWING NO. 141800	REV A
QA		DO NOT SCALE DRAWING		SHEET 1 OF 5	
CUST					
REVISED					

# MODELS



TOP  
CAVITY



BOTTOM

**TopLine**<sup>®</sup>

TITLE LCC18B50R.28x.35

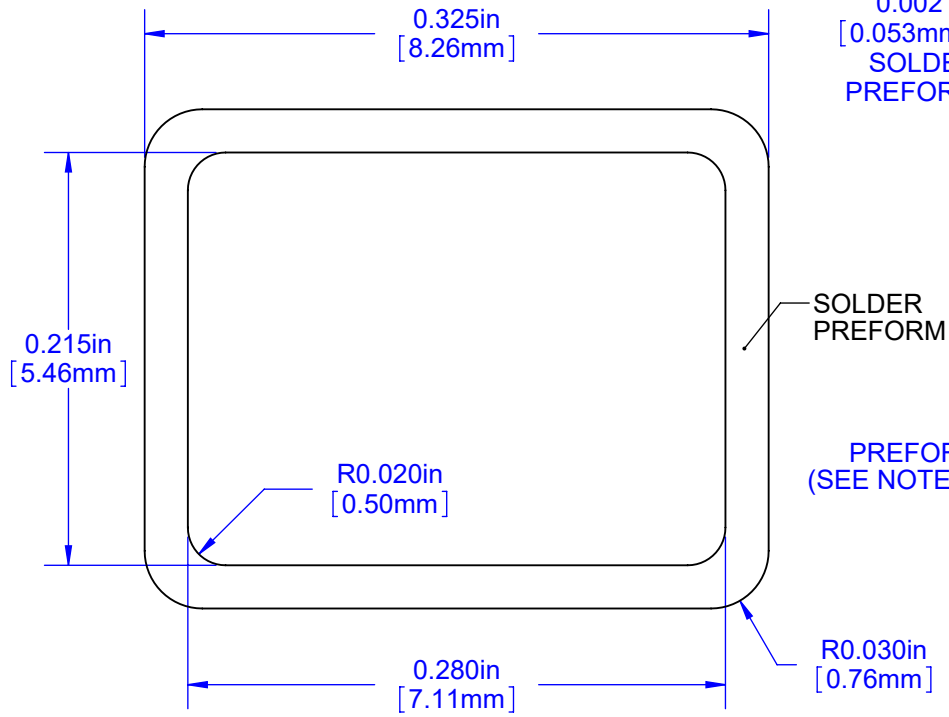
SCALE 12:1	SIZE A	DRAWING NO. 141800	REV A
---------------	-----------	-----------------------	----------

DO NOT SCALE DRAWING

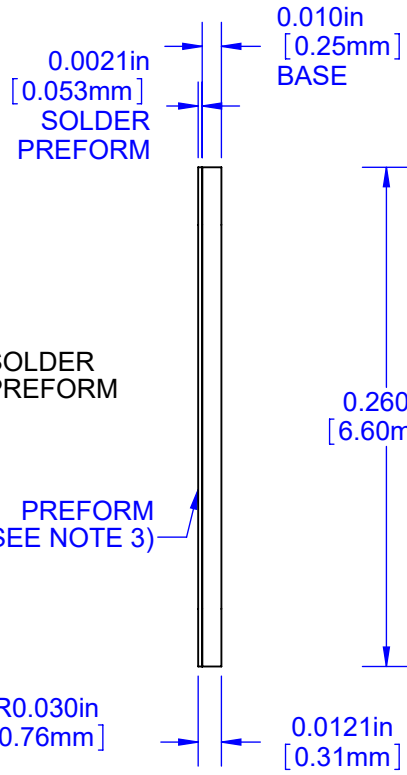
SHEET 4 OF 5

# COMBO LID

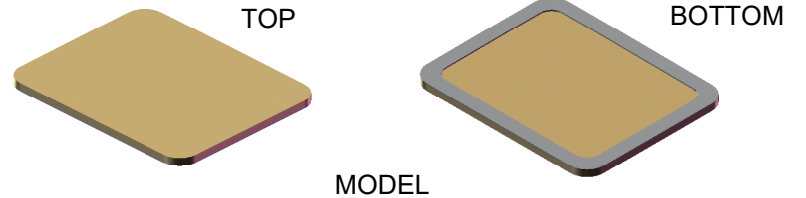
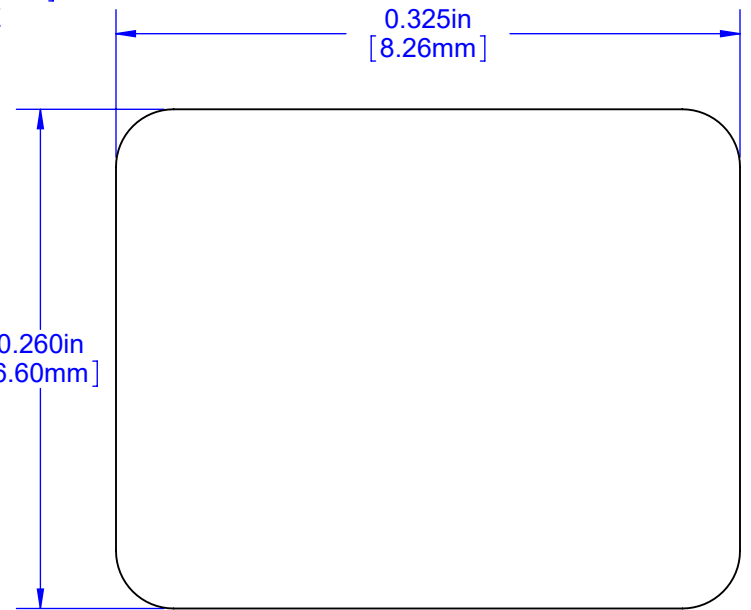
## BOTTOM



## SIDE



## TOP



### NOTES:

1. BASE MATERIAL: KOVAR or ALLOY 42.
2. PLATING: Ni 50~350 MICRO-INCH PER SIDE.  
Au 25 MICRO-INCH MIN PER SIDE.
3. SOLDER PREFORM: Au 80% ±1.0 Sn 20%.
4. FLATNESS 1.0 MIL(25µm) MAXIMUM PER 0.5-inch (12.7mm).

REF: W1266H

<b>TopLine®</b>			
TITLE		CL-325x260-A COMBO LID	
SCALE	SIZE	DRAWING NO.	REV
10:1	A	141800	A
DO NOT SCALE DRAWING			SHEET 5 OF 5